

www.hewittrad.com

HEWITT

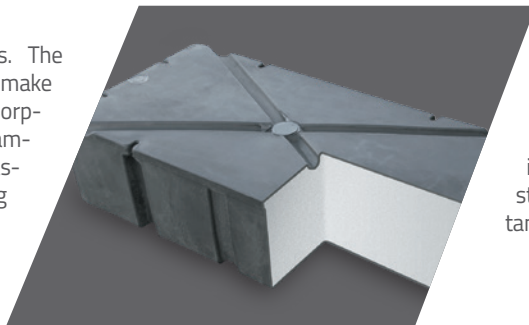
DOCKS - LIFTS - PONTOON LEGS

SUPERIOR CRAFTSMANSHIP
SINCE 1971

It's the Parts You Don't See That Make the Difference in Reliability

TANK FLOATS

Heavy-duty EPS foam tanks. The Roto-molded process used to make these floats prevents water absorption by forming a thick-walled seamless casing around the foam. The casing also integrates watertight molding mounts and heavy-duty mounting flanges for maximum reliability.



HEWITT HARDWARE

Every connection point is secured with the proper type of hardware. A combination of stainless steel, Durlak coated hardware and brass is used to achieve the required strength and/or corrosion resistance.



POLY TIRE

Helper wheels used to aid in the positioning of lifts are made from corrosion resistant polyethylene and feature seamless construction with relief venting. Hewitt's poly tire is the largest in the industry.



EMPHASIS ON EASY OPERATION

Hewitt lifting mechanisms are optimized to work with minimal effort. Manual winches are equipped with large diameter hand wheels and spinner knobs for faster, easier operation. Electric winches raise and lower lifts with the flip of a switch. Hydraulic systems feature a wireless remote control.

**We at HEWITT would like to thank you
for your interest in our products.**

We are confident that you will find the service, quality, workmanship and design of all HEWITT products to be the industry's finest. For over 40 years, boat and watercraft owners have trusted the safety and longevity of their investments to Hewitt lifts, docks and canopies.

HEWITT

DOCKS - LIFTS - PONTOON LEGS

HEWITT MACHINE AND MANUFACTURING INC.

709 Old Hwy 14, Nicollet, MN 56074

Weekdays, 7:30 am to 4:30 pm CST

Ph: 507.225.3421 or 800.544.2067 Fax: 507.225.3053

www.hewittrad.com

DOCKS

LIFTS

- 8 Roll-A-Dock®
- 12 Sectional Dock™
- 14 Classic Dock™
- 16 Vers-A-Dock™
- 18 Ultra Dock™
- 22 Wave Dock™
- 28 Truss Floating Dock™
- 32 Custom Floating Dock
- 34 Marinas

- 36 Commercial Gangways
- 38 Residential Gangways
- 40 Railings & Gates
- 42 Otter Island
- 44 Hewitt Swim Raft
- 46 Dock Accessories
- 52 Decking Options
- 53 Paint Options

- 58 Cantilever Lift
- 62 Hydraulic Cantilever Lift
- 64 Hi-Lift Vertical Lift
- 68 Personal Watercraft Lift
- 70 Float Plane Lift
- 72 Narrow Pontoon Lift
- 74 Hydraulic Lift Series
- 78 Large Capacity Hydraulic Lift
- 80 Roll-A-Rail™
- 84 Slide-N-Go™
- 86 Extreme Wave Port™

88 Genesis Wave Port™

90 SLX Wave Port™

92 Apex Wave Port™

96 Proteus Lift®

98 Boat Port™ Floating Lift

100 Boat Lift Boss™

102 Integrated Hoist

103 Heavy-Duty Electric Hoist

104 Lift Accessories

110 Lift Specifications

114 Canopies

122 Hydraulic Wide-Base Pontoon Legs®

124 Hydraulic I/O Pontoon Legs®

126 STAIRCASES



A Good Idea That Keeps Getting Better

OVER 40 YEARS OF QUALITY AND INNOVATION IN MANUFACTURED DOCKS, BOAT LIFTS AND ASSOCIATED PRODUCTS

HOW IT BEGAN. In 1971, Larry Hewitt purchased Bauer Welding Shop in Nicollet, Minnesota. A typical work day consisted of welding, machining, automotive repair or fixing and selling lawn mowers. Hewitt's business may have remained small if it were not for a friend with a back injury who approached him with a request to build a dock that would be easier to put in and out of the water. Together, they did some brainstorming, consulted a do-it-yourself book and studied the construction of rafters that Hewitt's uncle used in his metal business. Setting to work, Hewitt built a 64-foot-long dock that rolled on two sets of car tires. The dock's construction featured light-duty steel building trusses instead of conventional lumber. That single dock changed everything. Today, Hewitt Machine & Mfg. Inc. is known to marine dealers as an industry leader in dock and boat lift design. While still located in the town of Nicollet, the small welding shop has grown into a 350,000 sq. ft. manufacturing facility. Annually, the company employs 80 full-time and seasonal workers. Hewitt docks, lifts and associated products are sold through a dealer network that covers the United States and extends into Canada, Belgium and Holland.



DOCKS

HEWITT

DOCKS - LIFTS - PONTOON LEGS



HEWITT
DOCKS - LIFTS - PONTOON LEGS

8	Roll-A-Dock®	28	Truss Floating Dock™	42	Otter Island
12	Sectional Dock™	32	Custom Floating Dock	44	Hewitt Swim Raft
14	Classic Dock™	34	Marinas	46	Dock Accessories
16	Vers-A-Dock™	36	Commercial Gangways	52	Decking Options
18	Ultra Dock™	38	Ramps & Railings	53	Paint Options
22	Wave Dock™	40	Railings & Gates		

hewittrad.com



HEWITT
DOCKS - LIFTS - PONTOON LEGS

Let the Good Times Roll

Roll-A-Dock is simply the fastest and easiest way to get full enjoyment from your waterfront property. In cold climates, there's no need to endure frigid water – just roll it in and you're ready for action. Roll-A-Dock is ideally suited to gradual slopes and works equally well on soft or rocky bottoms. A basic dock can be easily placed using a vehicle or installed in a matter of minutes by as few as two people.

Built Better to Better Meet Your Needs

With the strength of its design, Roll-A-Dock can be extended to virtually any length you need. The basic starter unit is a 16-foot-long wheel-end assembly. 4', 8' and 16' add-on sections can be connected to make a single free-span dock up to 48' long. For greater lengths, simply install a dock hinge and continue adding sections with wheel kits and supports. Ramps, triangular sections and side sections are also available to complete your installation. Roll-A-Dock will provide a lifetime of service. All-aluminum frames, galvanized steel frames and all other components have been designed for low maintenance and superior resistance to corrosion.

EASY ADJUSTMENT OVER A WIDE RANGE OF DEPTHS

A built-in winch with removable hand crank allows quick height adjustment for different depths or changing water levels. Adjustments are easily made without ever stepping into the water. Standard Model adjusts from 2-1/2' to 5-1/2'. Deep Water Kit adjusts from 2-1/2' to 8'.

4' AND 6' WIDTHS, ALUMINUM OR GALVANIZED STEEL

While some portable docks are as narrow as 36", Roll-A-Dock gives you the choice of 4' or 6' wide models - plenty of room for people to meet and pass. Select all-aluminum construction for low weight and easy handling or galvanized steel for maximum strength.

DESIGN YOUR OWN DOCK LAYOUT

Roll-A-Dock is easily lengthened with add-on sections or expanded to form "T"s, "L"s or side platforms. A wide variety of accessories are also available.

Setting the Standard in Portable Dock Design Since 1971

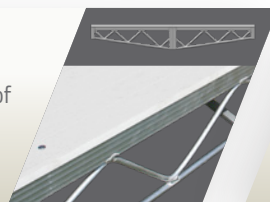
THRU-FLOW DECKING

Decking allows sun to shine through to water below. Less shade from the dock means better water visibility below the dock.



BRIDGED FRAMEWORK

This design provides maximum strength with a minimum of weight. The open sides of the frame also improve stability by reducing wave resistance.



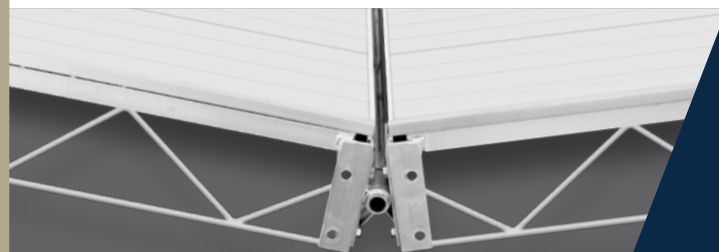
STRONG CONNECTIONS

There is no loss of strength, even at the joints. This design makes it possible to have a steel frame dock up to 32' in length that requires no extra supports.



OPTIONAL SMALL HEAVY-DUTY HINGE

Recommended for use on longer, multi-section docks over 48' long and equipped with two or more wheel bases.



POPULAR LAYOUTS

Add-on sections can be attached to one or both sides. Available sizes: 2', 4', 6' widths, and 4', 8', 12', 16' lengths. Custom sizes also available.

Single or double wings with or without triangle.

Dock hinge recommended when connecting multiple docks.

See pages 46-53 for accessories and description of decking options.

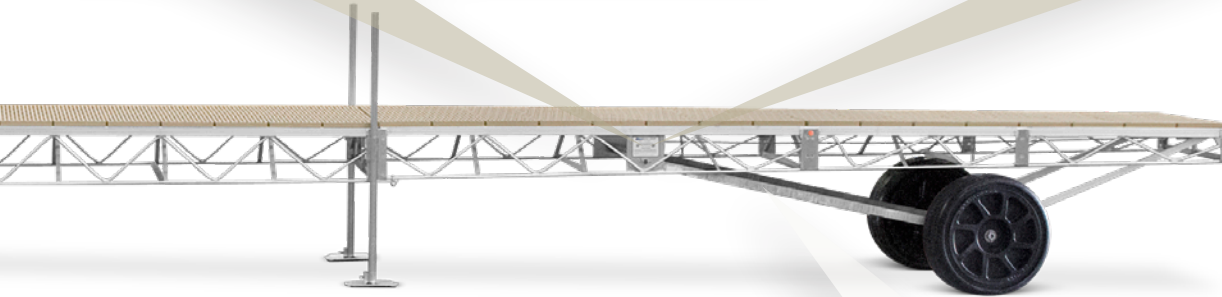
WINCH OPERATION

The height adjusting winch is operated with a removable hand crank. Height adjustments can be made while standing on the deck.



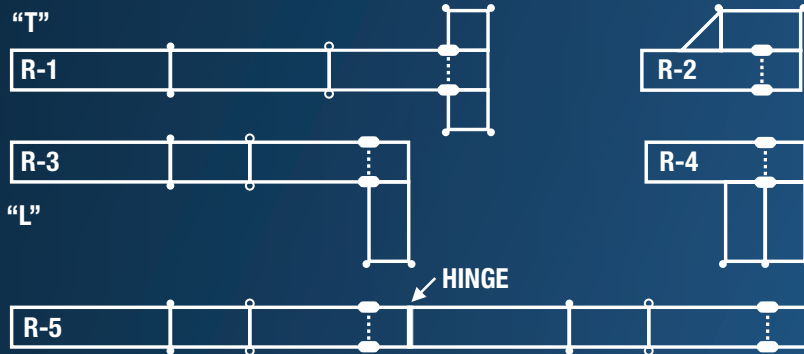
INBOARD MOUNTED WINCH AND CABLE

The height adjusting winch and cable is located inside the dock frame for greater safety. There are no exposed parts to damage your boat when you pull along side.



DOUBLE BRACING

Unique "V" type bracing reduces the clear span on a 32' dock to only 21'. This design gives the wheel assembly superior strength and assures maximum stability on soft or rocky bottoms.



ThruFlow Decking

Maintenance-free Thru-Flow decking is lightweight and durable. Debris and water easily fall through the dock surface, leaving behind a clean deck.

Aluminum

ThruFlow

Cedar

Skidguard*

*Available on 2', 4' and 8' wide docks only.



DECKING OPTIONS



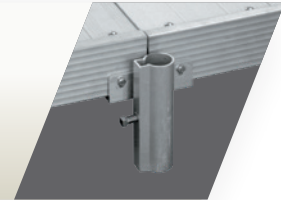
Economical Modular Post and Plank System

Hewitt Sectional Dock Systems offer greater economy, quick setup and minimal maintenance. Frames and decking are pre-assembled in easy-to-handle modules. The aluminum sides wrap around the decking to maintain a crisp, clean appearance. Dock sections are 8' and 10' long and come in both 4' and 6' widths. Sections may be joined end-to-end or turned at right angles to form "L"s, "T"s, and platforms. Frames, poles and brackets are all made from rustproof, corrosion-resistant aluminum and never need painting.



BOLT-ON CROSS ARMS

Heavy-duty aluminum post brackets are bolted on for superior strength.



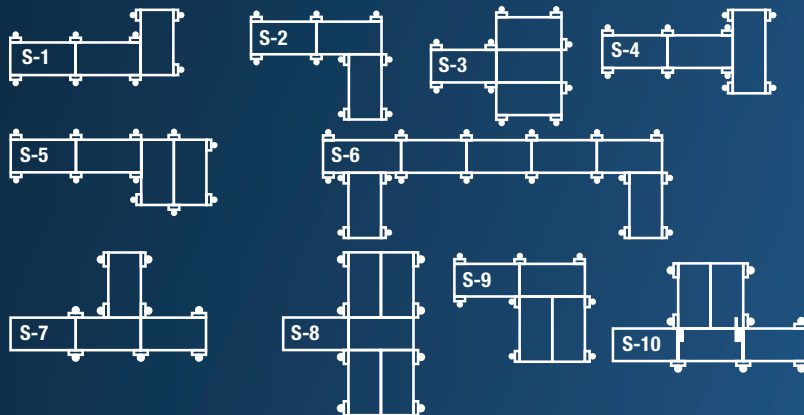
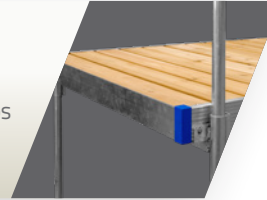
DECK AND SIDE RAIL CONSTRUCTION

Aluminum side rails assure high strength and stability for a lifetime of service. Decking is fitted into a continuous channel on both sides and mechanically fastened for better support.



OPTIONAL END CAP

Complete the look with optional aluminum end caps for section ends.

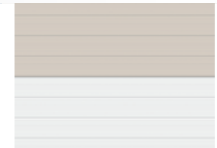


POPULAR LAYOUTS

4' x 8', 4' x 10', 6' x 8 or 6' x 10' combined deck and frame sections, poles in 5' and 8' lengths, turn brackets (optional), and x-bracing stabilizer bars (optional).

See pages 46-53 for accessories and description of decking options.

Aluminum



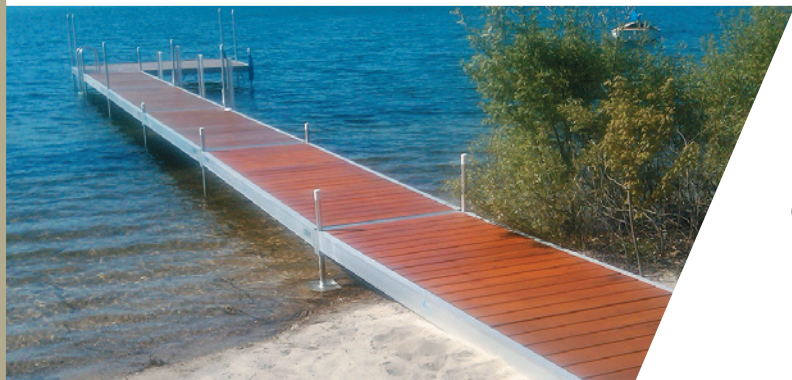
ThruFlow



Cedar



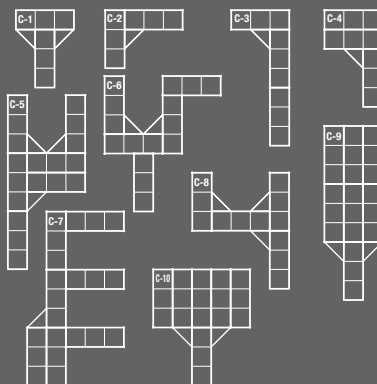
Exceptional Engineering Redefining the Sectional Dock



Hewitt Classic Dock offers the great appearance and flexibility of a post and plank dock in a high-strength modular system. The Classic is perfect for people who want to make the most of their recreational time. Large 4' x 8', 4' x 12', 4' x 16' sections mean fewer parts for faster installation. Optional wheel kits are also available to aid placement and removal. Aluminum construction eliminates painting and requires little or no maintenance. Modular design also makes it easy to add on or change the configuration of your dock at any time.

SIMPLIFIED ASSEMBLY

Pre-engineered components make installation a breeze with a 1/2" wrench the only tool needed for assembly. Dock sections are secured and adjusted for height with the turn of a bolt, and the 4' x 4' deck sections simply drop into place – no fasteners needed. For a streamlined appearance, poles may be cut flush with the deck surface.

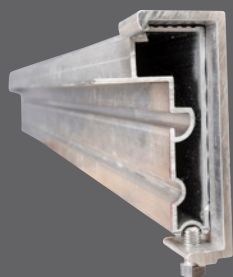


POPULAR LAYOUTS

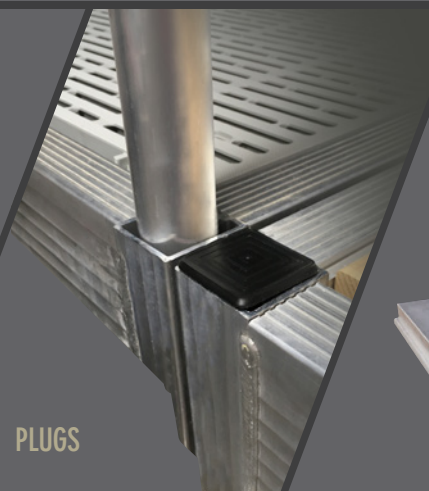
4' x 8', 4' x 12' or 4' x 16' sections with 4' x 4' drop-in deck panels. 3', 5' and 8' pole lengths. Sections may be connected in any combination.

Customize your Classic Dock with 13 color options, see page 53 for more details.

See pages 46-53 for accessories and description of decking options.



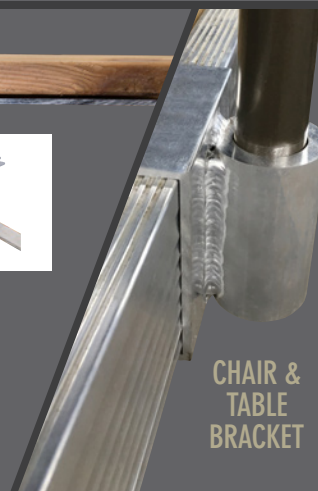
ACCESSORY
PLATE



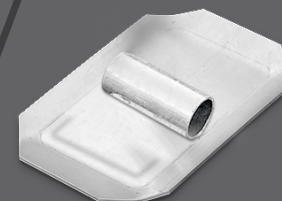
PLUGS



BACKER PLATE



CHAIR &
TABLE
BRACKET

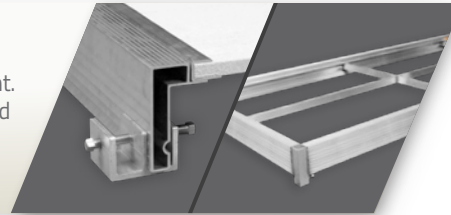


WHEEL PAD

Superior Strength, Flexibility, and Style

HEAVY-DUTY FRAMEWORK

Classic 4' x 8', 4' x 12', and 4' x 16' frame sections are extremely strong, yet lightweight. Made from rugged 2" x 5" double-wall extruded aluminum, the frames are reinforced with one center beam and two crossbars. Support poles, pads and fittings are also made from lightweight, corrosion-resistant aluminum.



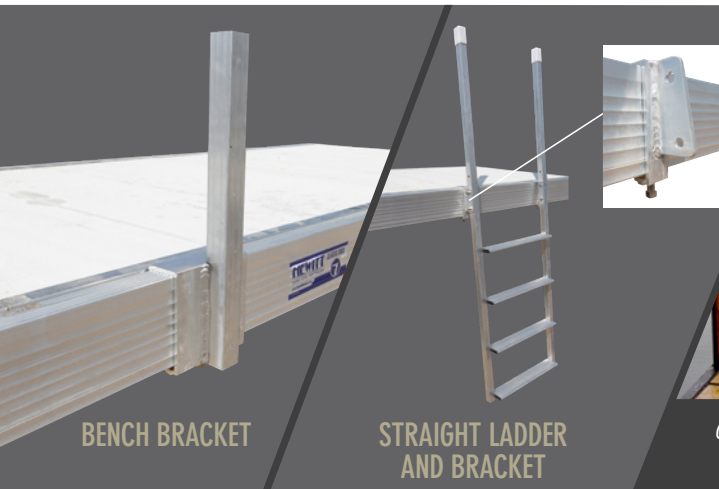
WHEEL DOCK KIT

POST DOCK KIT

POST DOCK KIT

ADJUSTABLE SCREW DOCK

ADJUSTABLE
SCREW WITH
BRAKE



BENCH BRACKET

STRAIGHT LADDER
AND BRACKET



Classic Dock with Cedar Decking
and Optional Painted Frame

PAINT OPTIONS FOR FRAME AND/OR DECKING	
Oil Rubbed Bronze	Silver Hammer Semi-Gloss
Mock Rock Texture	Flint Grey Texture
Peco Black	Green
Cardinal Heather Grey	Cracked
Blue Hammer	Brown Speck Texture
Silver Vein with Clear Topcoat	Black Hammer
	Beige Texture Semi-Gloss

Aluminum	
ThruFlow	
Cedar	

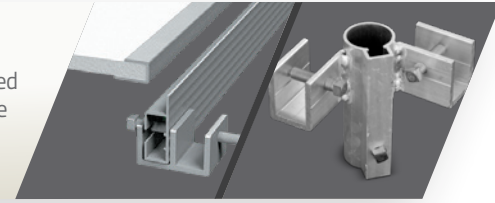


Uniquely Designed, Lightweight Modules for Easy Assembly

Hewitt Vers-A-Dock sectional dock systems offer many advantages over traditional post and plank docks. Modular components simplify setup, changes and removal. With smaller, lightweight frames and 4' x 4' drop-in deck sections, one person can easily assemble an entire dock. A 4' x 8' frame section weighs just 38 lbs (54 lbs with two poles attached), and deck sections are only 36 lbs each. Vers-A-Dock also features inside post mounts for a smooth side wall with no protruding parts that could damage boats. Vers-A-Docks require little or no maintenance.

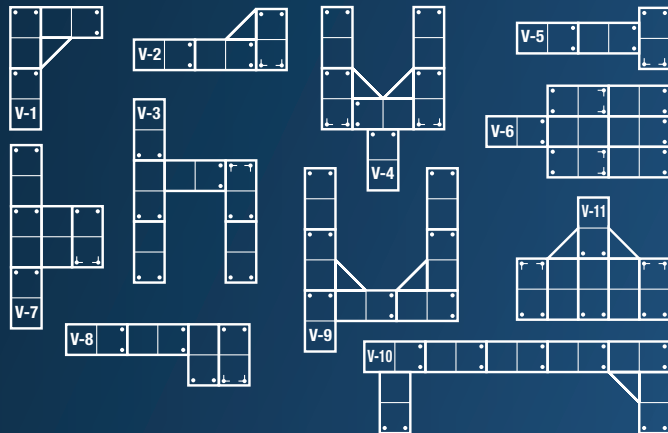
SOLID CONSTRUCTION

Vers-A-Dock modular frames are made from high-strength, double-wall aluminum extrusions and reinforced with a full-length center beam and crossbar. Poles, pole brackets, section clamps and base plates are also made from corrosion-resistant aluminum.



VERS-A-DOCK MOUNTING SYSTEM

A 1/2" wrench is the only tool needed for assembly. The 4' x 8' frames are simply set in the pole brackets, adjusted for height and secured with the turn of a bolt. The 4' sq. deck sections are held firmly in place by the side rails – no fasteners needed. For a streamlined appearance, poles may be cut flush with the deck surface.



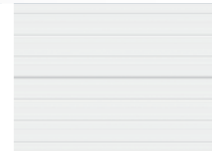
POPULAR LAYOUTS

4' x 8' sections with two 4' x 4' drop-in deck panels per section. 3', 5' and 8' pole lengths.

Sections may be connected in any combination.

See pages 46-53 for accessories and description of decking options.

White
Aluminum



White
ThruFlow



Cedar





HEWITT
DOCKS - LIFTS - PONTOON LEGS

Strength & Versatility for a Lifetime of Enjoyment

Need a tough dock like the Hewitt Roll-A-Dock but don't have the beachfront to roll it in for seasonal storage? Check out the Ultra Dock from Hewitt.

Like the Roll-A-Dock, the Ultra Dock frame is made from tube construction for the ultimate structural support and superior clean lines. It can also be quickly disassembled and tucked away for the winter without taking up a large amount of space. 4' wide sections are available in 8', 12', and 16' lengths.



POPULAR LAYOUTS

Ultra Dock's modular design makes adding on or changing the configuration easy.

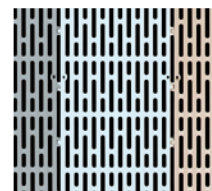
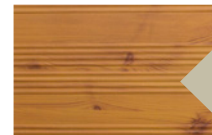
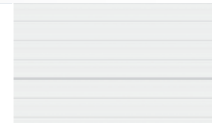
Ultra Dock offers a wide range of layout options. Choose from three sizes: 4' x 8', 4' x 12' and 4' x 16'. 4' x 8' sundecks available to make platforms and large sun deck.

See page 21 for Ultra Dock accessories.

Aluminum

Wood Grain
Aluminum

ThruFlow



ULTRA DOCK™

DECKING OPTIONS

ADJUSTABLE SCREW LEGS

Small 35-1/2" to 51"
Medium 42-1/2" to 63"
Large 54-1/2" to 87"

Using standard 27" tire from
top of deck to the ground.
(16" tire deduct 5-1/2")



ULTRA DOCK POST BRACKET



UNI DOCK CLAMP

Sections can be connected end-for-end or side-by-side. All sections connect using the Uni Dock clamp.



MODULAR DESIGN

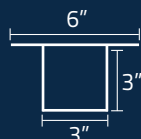
Ultra Dock's modular design makes adding on or changing the configuration easy.

Optional
16" Wheel
available.



ADJUSTABLE WHEEL

Heavy-duty 3" x 3" adjustable screw leg with 6" full-length support flange features one-piece bracing giving the Ultra Dock superior strength and support.

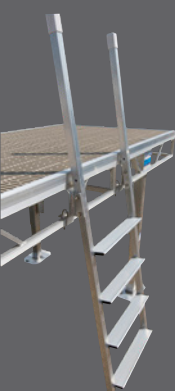


BRAKE AND STOP BOLT

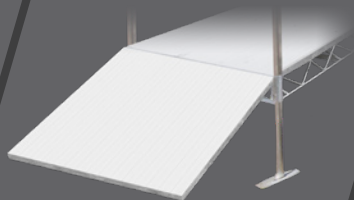
HEWITT

DOCKS - LIFTS - PONTOON LEGS

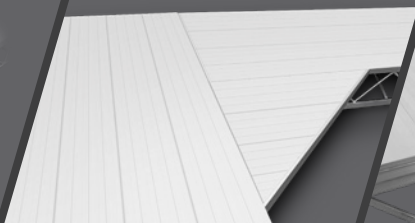
ULTRA DOCK™ ACCESSORIES



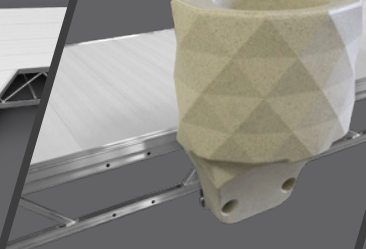
ULTRA DOCK LADDER



4', 8', OR 12' RAMP



4' TRIANGLE SECTION



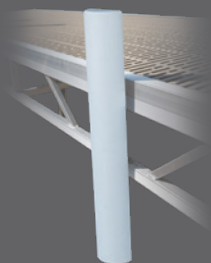
LARGE AND SMALL
FLOWER POTS



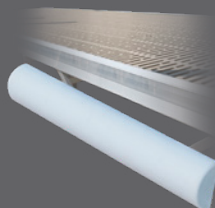
GARBAGE CAN



11" TRUSS CORNER
BUMPER



30" BUMPER - VERTICAL



30" BUMPER - HORIZONTAL



6" FOLDING CLEAT SEAT



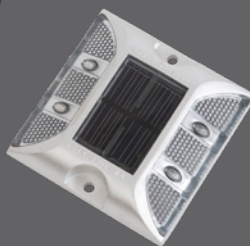
WHEEL PAD



3-STEP DOCK STEPS



ADJUSTABLE SHORE-END
HELPER WHEELS



SOLAR DECK LIGHT

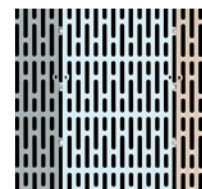
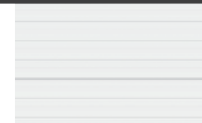


4' OR 8' OFFSET BENCH

Aluminum

Wood Grain
Aluminum

ThruFlow



DECKING OPTIONS



DOCK CORNER
Adds dock surface area. 30" or 60" corner deck section.

DECK/FLOAT SECTION SIZES

120" L x 60" W x 16" H | Weight: 350 lbs | Weight Cap: 3,000 lbs
 120" L x 60" W x 18.5" H (Bridged) | Weight: 375 lbs | Weight Cap: 3,000 lbs
 120" L x 40" W x 16" H | Weight: 250 lbs | Weight Cap: 2,000 lbs
 60" L x 60" W x 16" H | Weight: 200 lbs | Weight Cap: 1,500 lbs
 60" L x 30" W x 16" H | Weight: 90 lbs | Weight Cap: 600 lbs

H-BEAM KITS

24" H-Beam Kit (Pair) | Connects two 60" x 120" deck sections end-to-end
 50" H-Beam Kit (Pair) | Connects two 60" x 120" deck sections side-to-side
(Recommended for permanent, year-round install)
 31" H-Beam Kit (Single) | Connects two 40" x 120" deck sections end-to-end
(Can also connect two 60" x 120" deck sections side-to-side. Recommended for seasonal install)



Creates a 30-degree angle.
Choose from 40" and 60" sizes.

DOCK WEDGE

Features a 30-degree angled, one-piece design with a top deck, bottom deck, foam-filled body and molded-in H-Beams. Connects to all dock sections, providing easier entry and a narrower footprint to your dock. Both top and bottom of wedges feature textured finish. Built-in design allows reversible placement from either side of dock sections.

Residential and Commercial Floating Dock System

Hewitt Wave Dock System is easy to assemble and infinitely modular, featuring paver-style textured decking, foam-core floats and a patented H-Beam Connection System. Simply put – Beautiful decks, solid floats, easy assembly and a full line of accessories and components.

FOAM-FILLED INTERIOR DOCK SECTION



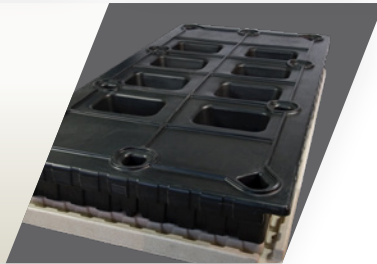
SECTION TOP (DECK) WITH H-BEAM CHANNEL-LOCK CONNECTION

Sections connect quickly and can be arranged in an infinite number of configurations. H-Beams simply slide into the molded channels on the sides or ends of each Wave Dock Deck/Float section.



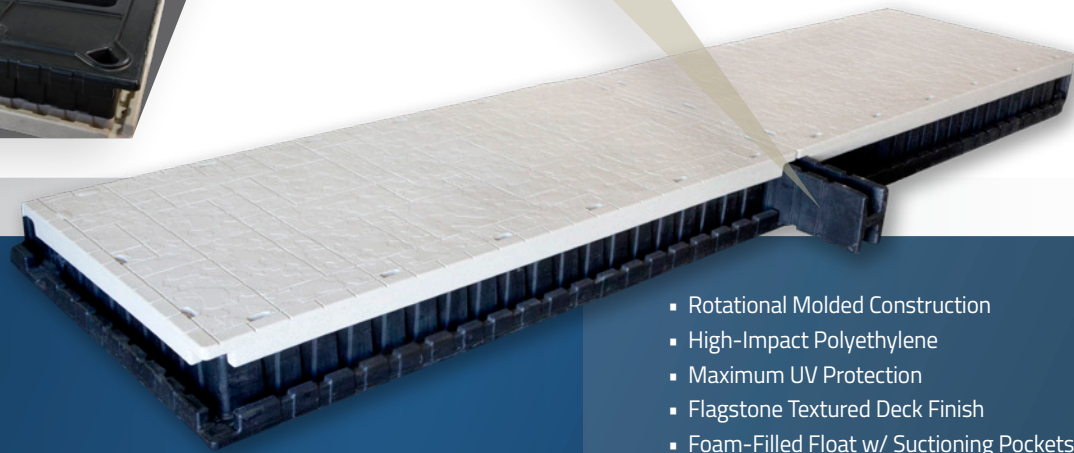
SECTION BOTTOM (FLOAT) WITH SUCTIONING POCKETS

A foam-filled Float engineered with suctioning pockets that dramatically increase stability and keep your deck where you want it – on the water.

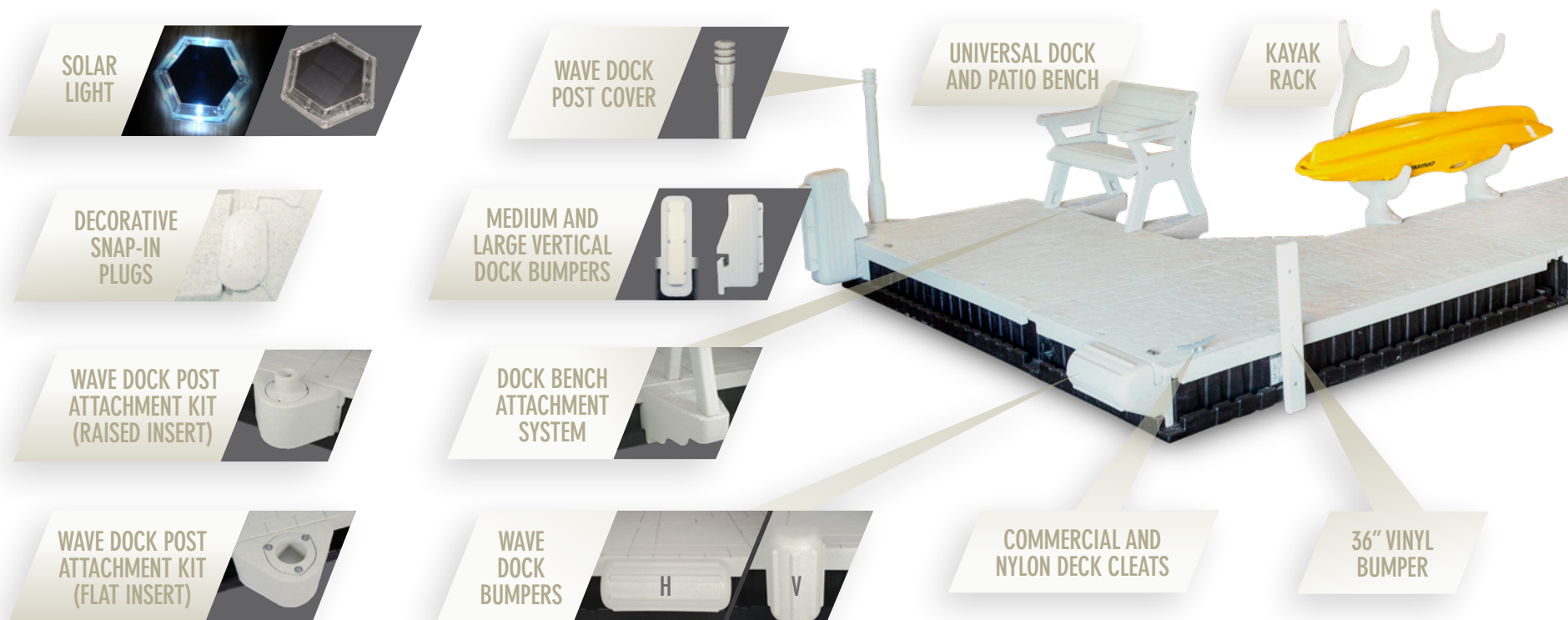


WAVE DOCK DECK/FLOAT SECTIONS

Revolutionizing the way waterfront home owners and marinas customize their floating dock system, Wave Dock Deck/Float Sections feature an esthetically pleasing “Pebble Beach” textured Deck finish, bringing a rich new look and feel to the industry. Rotationally molded with high-impact polyethylene and maximum UV protection, the Wave Dock system is strategically designed for beauty and function.



- Rotational Molded Construction
- High-Impact Polyethylene
- Maximum UV Protection
- Flagstone Textured Deck Finish
- Foam-Filled Float w/ Suctioning Pockets
- H-Beam Connection System
- 5 Deck/Float Section Sizes
- 3 H-Beam Sizes
- Full Line of Integrating Accessories
- Integrating PWC Ports
- Unlimited Configurations



UNIVERSAL DOCK AND PATIO BENCH

4' Bench: 52"Wx37"Hx27"D
5' Bench: 64"Wx37"Hx27"D
6' Bench: 76"Wx37"Hx27"D

DOCK BENCH ATTACHMENT SYSTEM

Places the bench over the water.

DOCK POST ATTACHMENT KIT

*(With Flat Reducer Bushing)
Available with 2", 4" or 5" Bushing Kit.*

WAVE DOCK POST COVER

Slides over post. Mounts to Attachment Kit sold separately.

WAVE DOCK POST ATTACHMENT KIT

*(with 2" Raised Bushing)
Posts sold separately.*

DECORATIVE SNAP-IN PLUGS

*(Qty. 20)
For a clean, finished look.*

WAVE DOCK BUMPERS

*Horizontal and Vertical.
15.5"Hx9.5"D (Vertical) 4" above dock.
23"Wx9"D (Horizontal) Flush top of deck.*

MEDIUM AND LARGE VERTICAL DOCK BUMPERS

*10"Wx15.5"Dx34"H (Medium)
Extends 17" above dock surface.
10"Wx15.5"Dx44"H (Large)
Extends 27" above dock surface.*

KAYAK RACK

Stows two kayaks or canoes.

SOLAR LIGHT

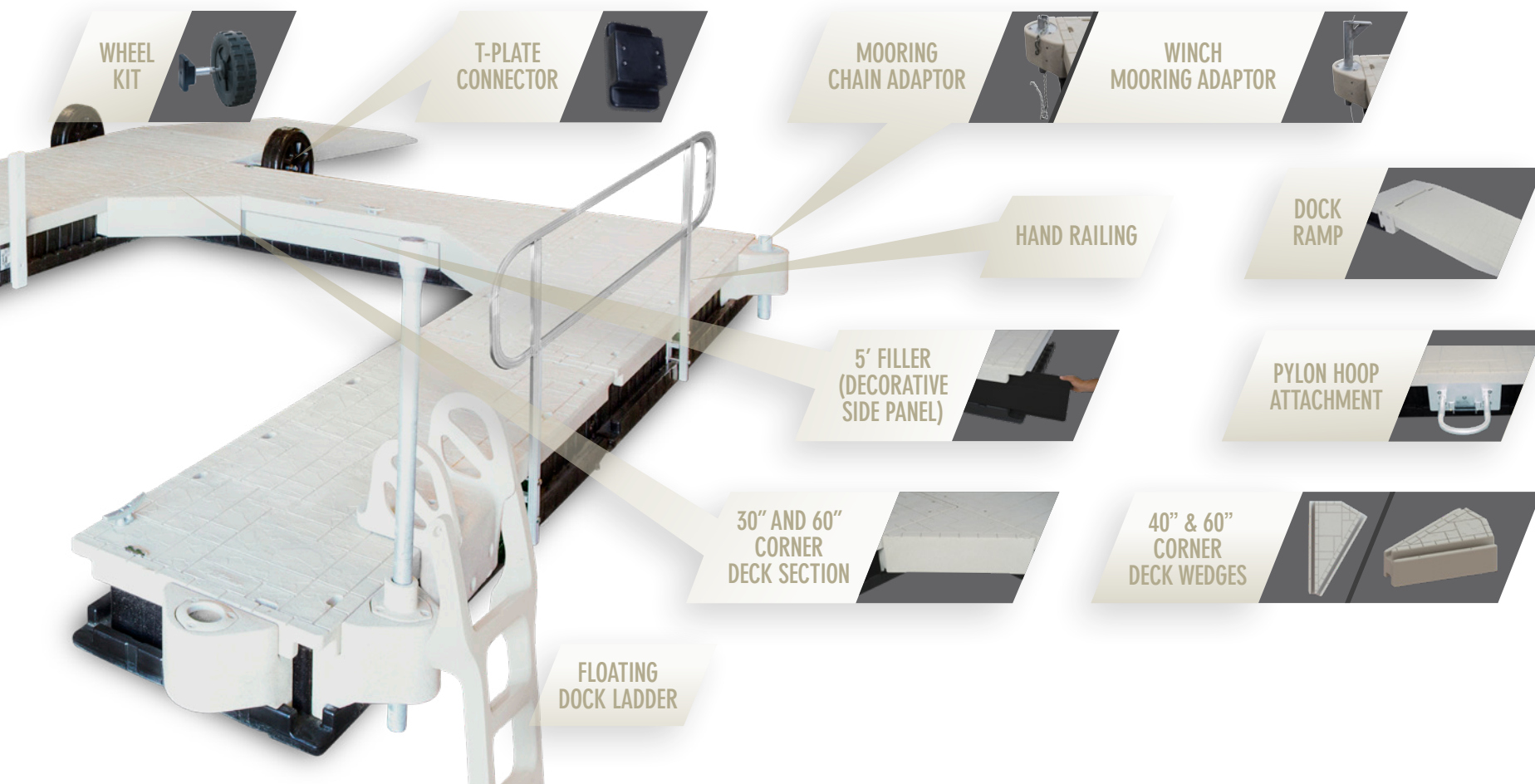
(Qty. 1)

COMMERCIAL AND NYLON DECK CLEATS

*8" Cleat (Qty. 2) 10" Cleat (Qty. 2)
Nylon Cleat (Qty. 2)*

36" VINYL BUMPER

Adjustable in height.



FOLDING DOCK LADDER

Folds up when not in use.

LWCW WHEEL KIT

Aids in installing and removing sections.

5' FILLER (DECORATIVE SIDE PANEL)

Creates a finished look.

CORNER DECK SECTION (30" & 60")

Adds to your surface area.

DOCK RAMP

*7' L or 12'8" L
Custom sizes available.*

HAND RAILINGS

5' L or 10' L

CORNER DECK WEDGES (30", 40" OR 60")

Provides easier entry and narrower footprint to dock setup.

T-PLATE CONNECTOR

Secures personalized accessories.

PYLON HOOP ATTACHMENT KIT

4" or 10" hoop (Qty. 1)

MOORING CHAIN ADAPTOR

*For 3/8" and 1/2" chain.
Mounts to Post Attachment Kits.*

WINCH MOORING ADAPTOR

Mounts to Post Attachment Kit. Winch and Handle Sold Separately.

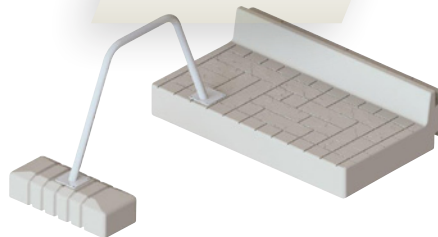
Pebble Beach Textured Finish

All accessories feature "Pebble Beach" color designed to match the Wave Dock system.





STORAGE
BOX



KAYAK ASSIST

FLOWER
POTS



KAYAK LAUNCH



UMBRELLA



PATIO
CHAIR

30"
TABLE



GARBAGE
CAN



LOWER
DECK

LOWER DECK SECTION

60"Lx20"W

Ideal for lounging at water level and provides an additional point of entry or exit.

DOCK BENCH STORAGE BOX

Storage Area: 48"Lx15"Wx15"D

Weatherproof and lockable storage box attaches to the back of the 4' and 5' Dock Bench allowing storage of PFDs and other gear.

KAYAK LAUNCH

These handrails provide ease of entry into and exit from your kayak. Adjustable frame.

KAYAK ASSIST

Provides stability when launching or exiting kayaks and canoes. Mounts to Lower Step Down. Includes one rail and float.

FLOWER POTS

Complete with T-Plate for mounting to your Wave Dock. Available in small and large sizes.

GARBAGE CAN

The perfect solution for adding easy waste collection to your Wave Dock. Includes T-Plate for mounting.

KAYAK/CANOE STABILIZER KIT

Attaches to kayaks and canoes providing ultimate stability. Polyethylene floats are nearly indestructible and can be adjusted up and down as well as in and out. Long-lasting anodized aluminum and stainless steel parts.

30" TABLE

Low-maintenance and durable all aluminum powder coated mesh table. Includes hole for an optional umbrella.

PATIO CHAIR

Features a powder coated all aluminum, adjustable swivel rocker mechanism. Chair is wrapped with two layers of fabric making it extremely durable and comfortable.

UMBRELLA

8' Patio style retractable umbrella easily fits inside table mounting hole.

Glide Through the Water

Our sit-on-top style Wave Kayaks are fun, comfortable and stable recreational kayaks designed for use on lakes and slower moving rivers. Wave Kayaks glide effortlessly through the water for paddlers of all ages and abilities.



CRUIZER
KAYAK



IMPULSE
KAYAK



KAYAK STABILIZER KIT

KAYAK PADDLE

7' paddle with two-piece design easily breaks down for storage and transport.



Kayak bottoms are designed with superior stability and a high-speed hull for reducing drag.



Kayak rack available on page 26.

CRUIZER

Entry-level kayak, perfect for the beginning paddler who wants a quick escape on the lake. Available in blue or yellow.

Overall Dimensions:
8'6"L x 30"W x 15"D
Cockpit Dimensions:
4'L x 23"W x 6"D
185 lb Weight Capacity
36 lb Kayak Weight

IMPULSE

Our deluxe kayak is the perfect vehicle for an afternoon of summer paddling. Available in blue or yellow.

Overall Dimensions:
10'L x 31"W x 10"D
Cockpit Dimensions:
4'L x 23"W x 6"D
300 lb Weight Capacity
45 lb Kayak Weight



- Rotational Molded Construction
- High-Impact Polyethylene
- Maximum UV Protection
- Superior Stability
- Spacious Cockpit
- High-Speed Hull
- Molded Foot Rests
- Molded Beverage Holders
- Molded Handles

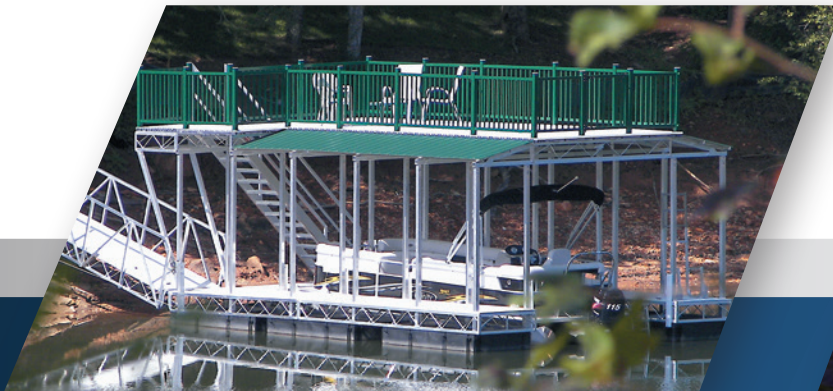


HEWITT
DOCKS - LIFTS - PONTOON LEGS

The Dock System That Works Where Others Can't – Deep Water and Frequently Changing Water Levels

2', 4', 6' AND 8' WIDE DOCKS CONFIGURED FOR RESIDENTIAL OR COMMERCIAL APPLICATIONS

Hewitt Floating Docks are ideally suited for complex layouts and commercial as well as residential use on deep-bottom lakes, reservoirs and rivers. Floats automatically adjust to high and low water conditions, so you'll never be left high and dry or find your dock submerged. 6' and 8' wide models provide extra space for equipment and allow people to pass easily in heavy use areas. Hewitt Floating Docks feature the same advantages found in all Hewitt systems – easy assembly, low maintenance and expandability. Whether you choose aluminum for low-weight or galvanized steel for maximum strength, Hewitt Floating Docks are engineered and constructed to provide unexcelled performance and durability.



THE SKY'S THE LIMIT

As pictured, Hewitt Floating Docks can take on almost any size or shape and can be expanded vertically to include upper decks, hip roofs and gable roofs.



SUPERIOR QUALITY FLOTATION TANKS

Hewitt Floating Docks are supported by float tanks that are so reliable they meet U.S. Military specifications. The tanks are comprised of EPS foam encased in a seamless, heavy-duty polyethylene shell. Tanks are resistant to cracking and corrosion and are suitable for year-round use. They can even be left out during the winter. Float tanks are available in a wide range of sizes with different load-carrying capacities.

Commercial-Quality Strength and Durability

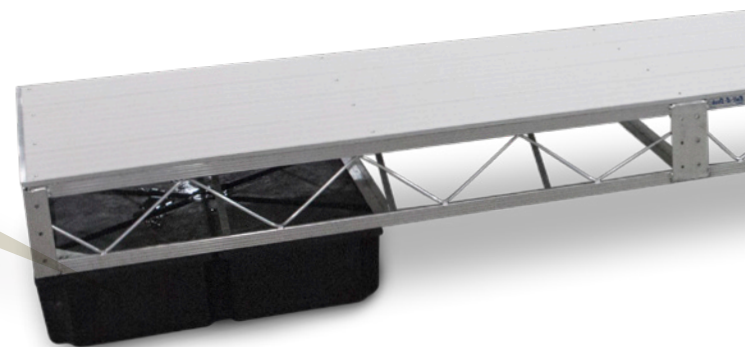
The Floating Dock incorporates engineering principles proven in bridge and crane construction. The open framework design provides maximum strength with minimum weight and creates less wave resistance for superior stability. Heavy-duty structural support tubes are used at both the top and bottom of the side frames. The entire frame is reinforced with structural channel bracing and extra-strong angle crossbars.

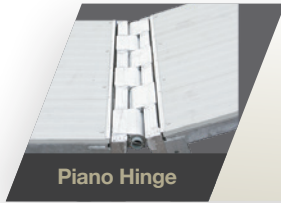
FLOAT TANKS

Float tanks have molded mounting flanges for easy attachment to the bottom of the dock frame.

SUNKEN TANK

Floats may also be installed within the frame for a lower profile on the water.





Piano Hinge

FLOATING DOCK HINGES

Specially designed full-width hinges are recommended for connecting sections. Hinge connections prevent undue stress on the structure by allowing the dock to flex in rough water conditions or in locations where water levels change rapidly.

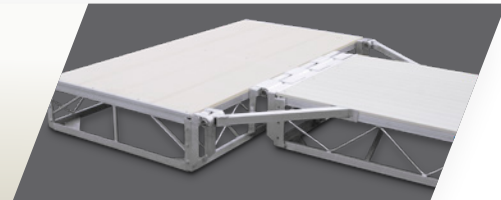


Heavy-Duty Hinge



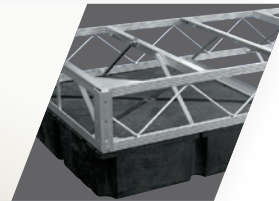
CORNER SUPPORT HINGE

Corners are strengthened with extra large gussets.



BRIDGED FRAMEWORK

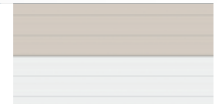
Open framework design and heavy-duty structural support.



See pages 46-53 for accessories and description of decking options.

Aluminum

Other colors available.



ThruFlow



Cedar



Skidguard*

** Available on 2', 4' and 8' wide docks only.*





A SOLUTION FOR EVERY NEED

If your needs are not met by any of the dock styles shown, please have your local distributor contact us with your specifications. Hewitt Manufacturing has designed many one-of-a-kind docks with unique performance characteristics. Tell us what you need and we can build it.

HEWITT
DOCKS - LIFTS - PONTOON LEGS

Heavy-Duty, Flexible and Superior Quality

Custom dock sections are engineered to provide comparable strength to the standard model and offer the same long-term durability and corrosion resistance. Frames are braced with heavy-duty structural aluminum or galvanized steel. Sections can also be joined with the Floating Dock Hinge to provide flexibility. Custom Docks use the same high-quality floats as the standard model and can be configured to satisfy any load requirement.

- Sections are available in any width at 4', 8', 16', 20' and 24' lengths.
- 2" x 4" or 2" x 5" continuous sidewall instead of an open truss design.
- Streamlined appearance.
- Aluminum or galvanized steel.

See pages 46-53 for accessories and description of decking options.



Aluminum

Other colors available.

ThruFlow

Cedar

Skidguard*

** Available on 2', 4' and 8' wide docks only.*





HIGH-PERFORMANCE WITH UNLIMITED POSSIBILITIES

Contact your local dealer for a consultation for your marina needs. Hewitt Manufacturing has designed many one-of-a-kind marinas with unique performance characteristics. Tell us what your needs are and we can build it.

Complete Customization for a Perfect Fit

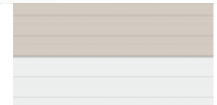
All Hewitt dock styles offer unlimited layout possibilities and can be utilized in the creation of a completely unique marina. Our 2', 4', 6', or 8' wide dock sections give you the option of using them in-line or side-by-side to create a custom configuration. Select all galvanized steel construction or aluminum for low weight and easy handling. Hewitt docks are easily lengthened with add-on sections or expanded to form "T's", side platforms and fingers of unlimited lengths. For more details on a specific dock style refer to that particular dock style in the catalog.



See pages 46-53 for accessories and description of decking options.

Aluminum

Other colors available.



ThruFlow



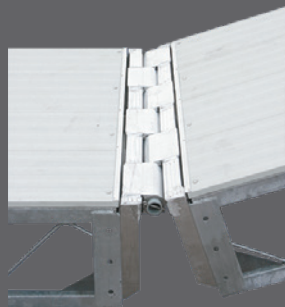
Cedar



Skidguard*

** Available on 2', 4' and 8' wide docks only.*

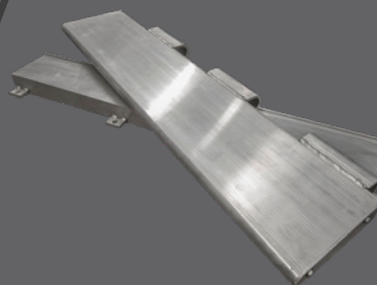




OPTIONAL
PIANO HINGE



OPTIONAL
HINGE TABS



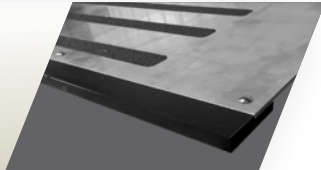
OPTIONAL
SWIVEL HINGE

HEWITT
DOCKS - LIFTS - PONTOON LEGS

Smooth Crossing

Gangways feature heavy-duty 2"x5" aluminum rectangle tube style and are available in lengths up to 48'. Welded construction forms a solid one-piece design. Gangways are standard with Truss railing, kickrail, midrail, pair of rollers, and heavy-duty transition plate with replaceable wear guard.

HEAVY-DUTY
TRANSITION PLATE



COMMERCIAL
GANGWAY

ROLLERS



3', 4', 5' and 6' wide. Custom widths also available.

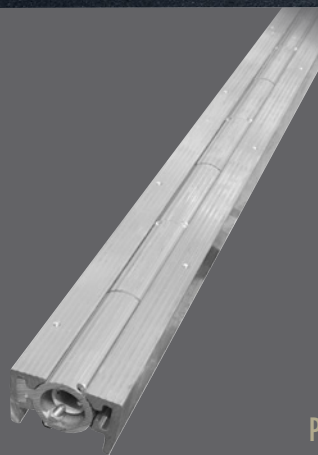
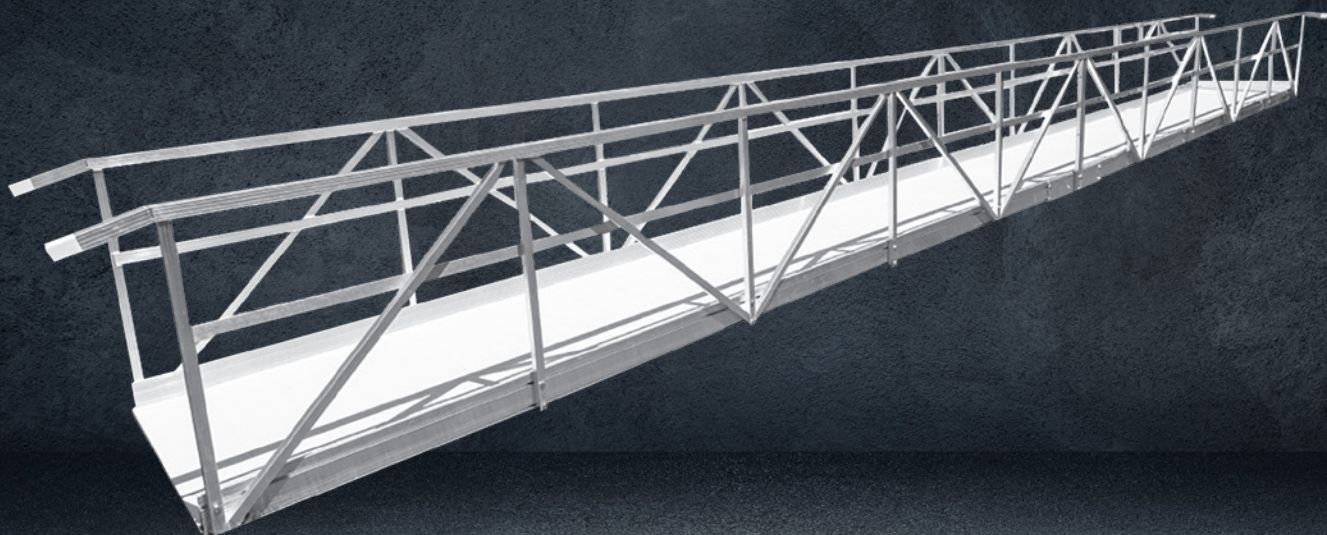
Aluminum
*Other colors
available.*



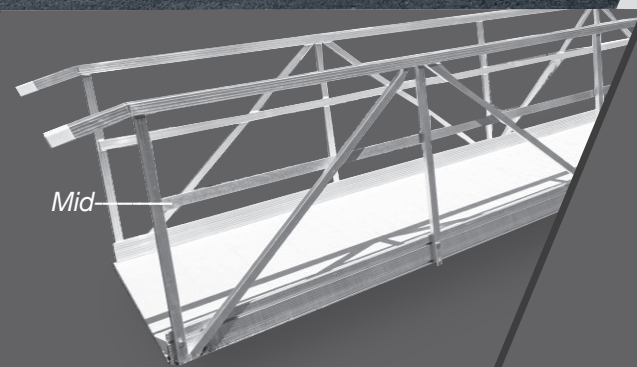
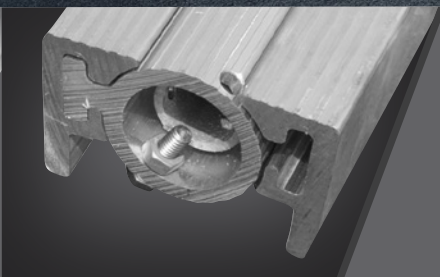
ThruFlow



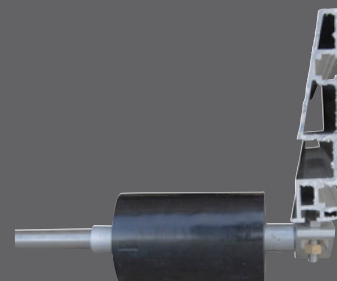
RESIDENTIAL GANGWAYS



OPTIONAL
PIANO HINGE



STANDARD
MIDRAIL AND/OR KICKRAIL



OPTIONAL
ADJUSTABLE ROLLER

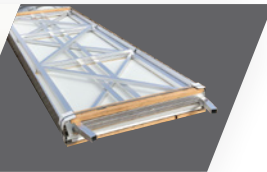
Safety and Accessibility

Residential ramps and gangways feature a 6" extrusion with a built-in kick rail and truss-style hand railing with a welded-in mid rail. Low-profile 2.5" decking height for easy entry/no-step. Modular design for ease of installation and accommodates future expansion in length seamlessly. Residential gangways are available in lengths up to 48'.

RESIDENTIAL
GANGWAY

LOW
PROFILE

RAMPS KNOCK DOWN
FOR EASY SHIPPING



Aluminum
*White or
Wood Grain*

ThruFlow

OPTIONAL
TRANSITION PLATE

OPTIONAL HEAVY-DUTY
TRANSITION PLATE

Several Handrailing Styles are Available



ADA HANDRAIL

CLASSIC HANDRAIL

STANDARD HANDRAIL



SECURITY GATE



ACCESS GATE



GATE LOCK

Choose from full-height security gate or mid-height access gate options. Both include keyed gate lock.

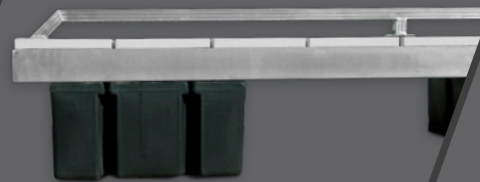


CABLE HANDRAIL

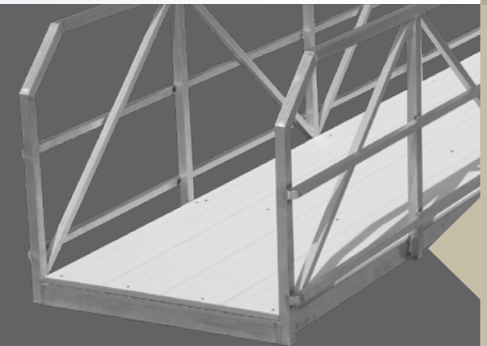
TRUSS HANDRAIL SHOWN WITH
MIDRAIL AND KICKRAIL OPTION

TRUSS HANDRAIL

One-of-a-Kind Railings and Gates



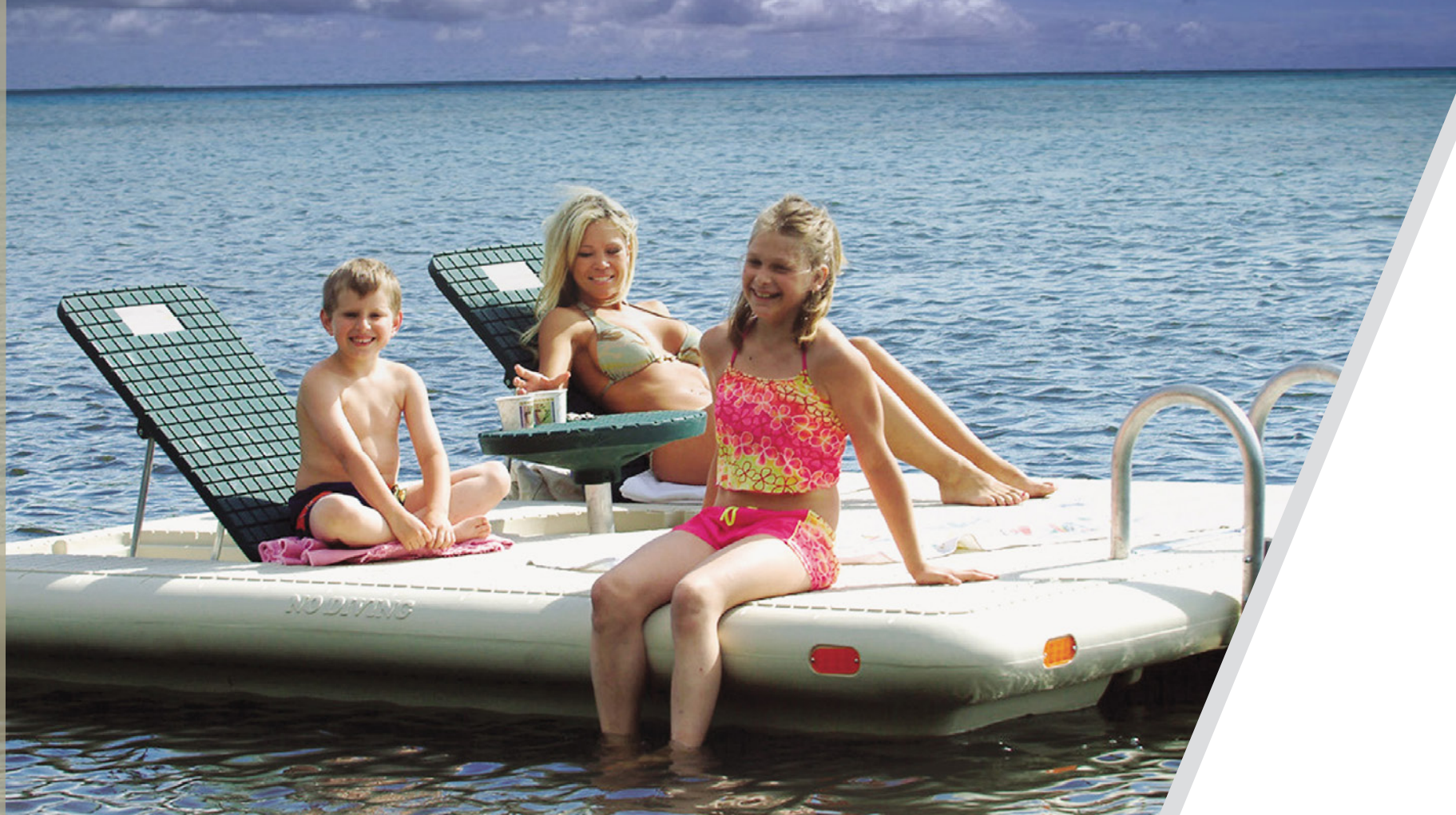
OPTIONAL TIE RAIL



Mid-

Kick-

OPTIONAL MIDRAIL AND/OR KICKRAIL
CAN BE ADDED TO ALL STYLES ABOVE



RAFT ANCHOR



DOUBLE ANCHOR CLEVIS KIT



PROTECTIVE COVER

Escape to Your Own Private Island

A floating resort with all the amenities. Kids and adults alike will love taking a mini-vacation on this large water & swim raft. Two adjustable backrests lay flat and completely integrate with the deck when not in use.



OTTER ISLAND
UMBRELLA &
SEAT CUSHIONS

OTTER ISLAND

8'Wx10'L
3,000 lb Weight Capacity
300 lb Raft Weight

Three Colors:
Beige Body/Green Accents
Yellow Body/Blue Accents
Yellow Body/Green Accents



- Storage space beneath seat backs
- Flip-up aluminum ladder for easy storage
- Non-slip surface
- Molded handles & rope hitches around entire raft bottom
- Recessed reflectors on all sides
- 100% weatherproof polyethylene construction
- Adjustable seat backs sit up or lay flat
- Rounded corners & pontoon-style bottom
- Pop-up table with beverage holders



Perfect for Swimming, Diving and Sunbathing

THIS DURABLE RAFT IS SOLIDLY BUILT
AND VIRTUALLY UNSINKABLE



OPTIONAL DOUBLE ANCHOR CLEVIS KIT



Retractable umbrella
with adjustable tilt.

OPTIONAL UMBRELLA

Always at the Center of Fun



See pages 46-53 for accessories and description of decking options.



Ladder in tipped-up position.

STANDARD RAFT FEATURES

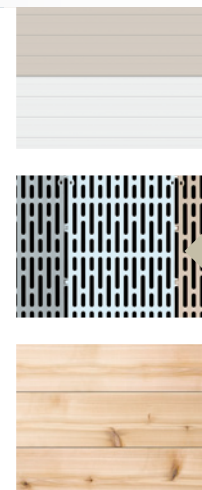
- Corrosion resistant all-aluminum frame
- Heavy-duty, foam-filled polyethylene float tanks
- Corner reflectors mounted on all sides for night time visibility and safety
- 8' x 8' platform, or choose your own custom size
- 8' x 8' platform raft weighs 340 lbs with a 1400 lb capacity

Optional accessories package includes corner bumpers, four-step ladder with tip-over hinge and all mounting hardware.

Aluminum

ThruFlow

Cedar





Ease Installation and Enhance
the Appearance, Safety and
Functionality of Your Dock

PATIO CHAIR, TABLE AND UMBRELLA



CANOPY OPTIONS

Standard trim combinations shown.
Custom combinations available.

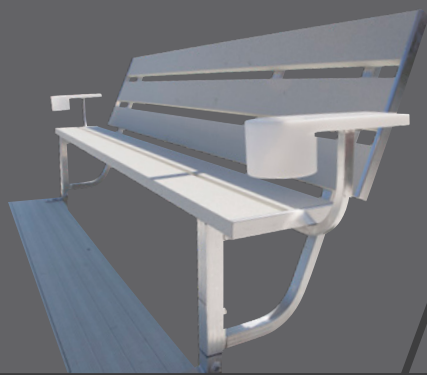
FABRIC

19 oz marine fabric. Other colors available through special order.

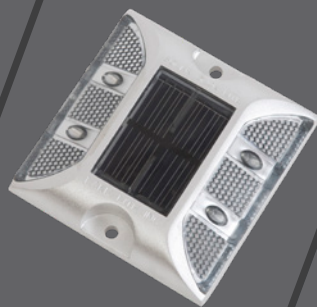


VINYL

16 oz nylon with 9 x 9 reinforced vinyl canopies. Randomly textured finish.



OFFSET BENCH



SOLAR DECK LIGHT



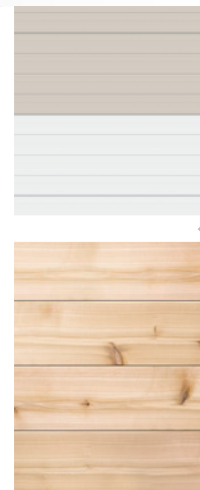
SOLAR POST LIGHT



LADDER

Aluminum

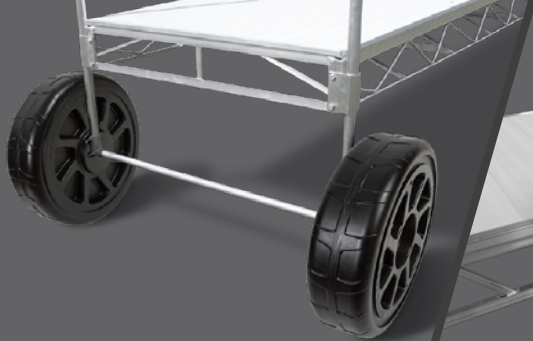
Cedar



BENCH OPTIONS



SHORE-END
SWIVEL WHEEL



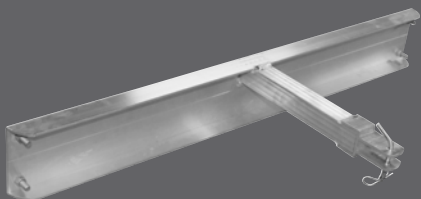
ADJUSTABLE SHORE-END
HELPER WHEELS



LARGE AND SMALL
FLOWER POTS



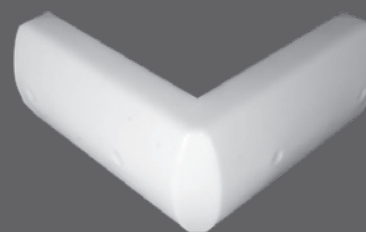
GARBAGE CAN



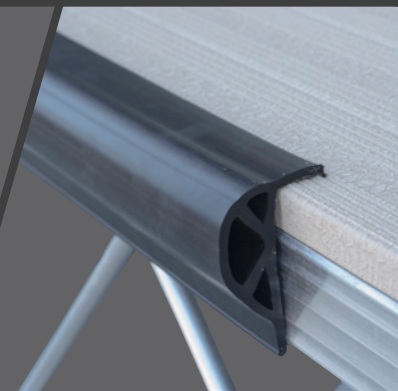
SHORE-END HITCH



48" HARBOR CUSHION
White or Black

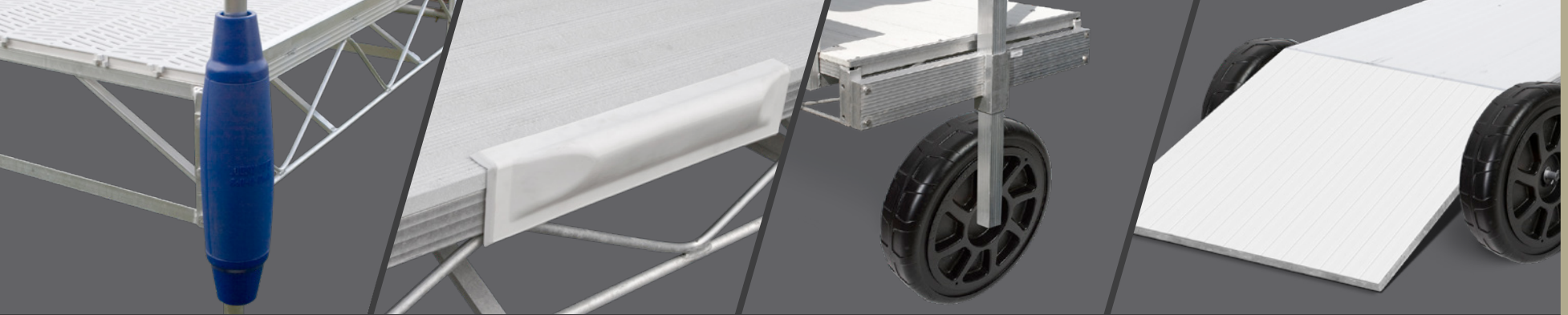


24" HARBOR CORNER
White or Black



10' DOCK BUMPER
White, Dark Gray, or Black

HEWITT
DOCKS - LIFTS - PONTOON LEGS

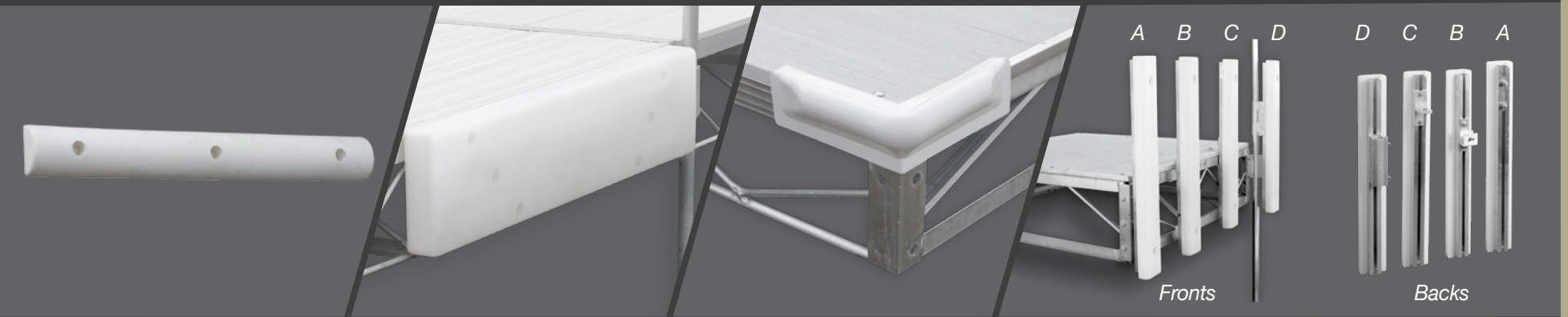


24" BLUE OR WHITE
POST BUMPER

STRAIGHT 18" DOCK BUMPER

"L" SECTION
HELPER WHEEL

RAMP



36" AND 48"
ROUND EDGE GUARD
White or Black

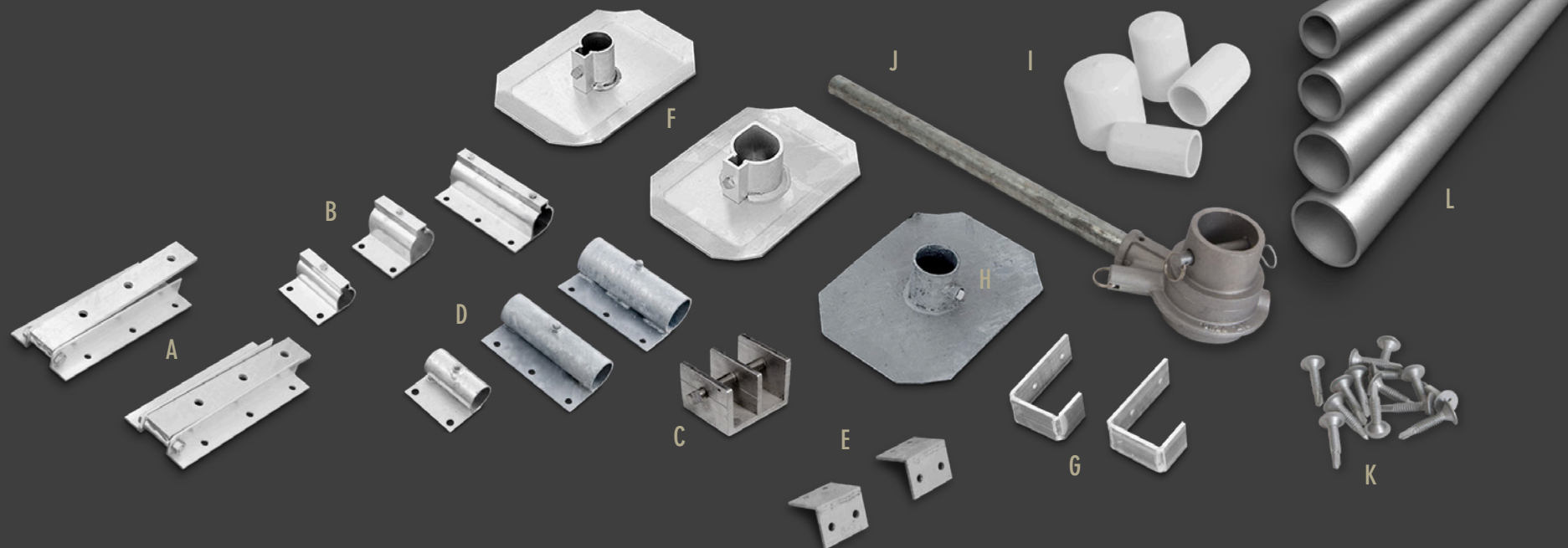
43" FRAME BUMPER
White or Black

10' CORNER BUMPER

36" VINYL BUMPERS
4 Styles Available

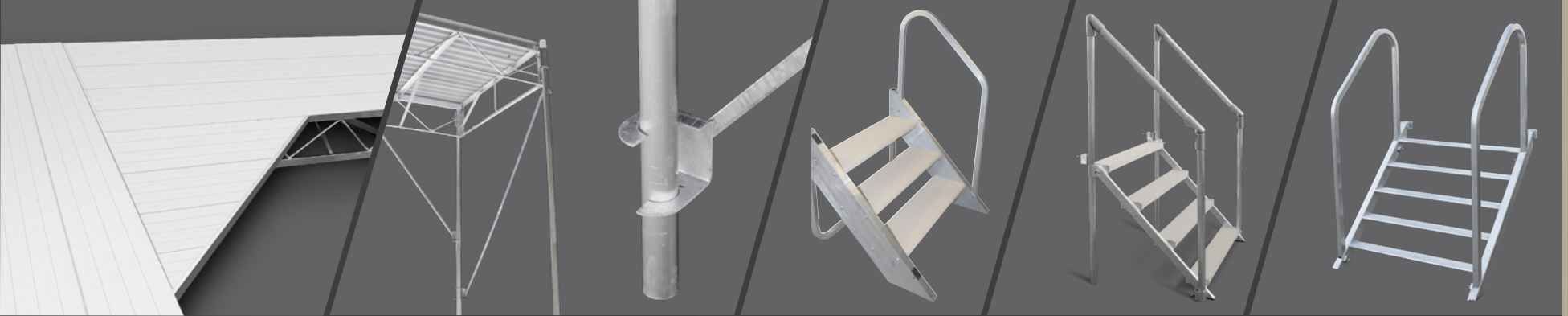
Safeguard Your Watercraft

Specialized Hardware, Supports and Railings



- A. HINGED SEA WALL BRACKETS
- B. ALUMINUM SUPPORT STAND BRACKETS
- C. CONNECTION CLAMP
- D. GALVANIZED SUPPORT STAND BRACKETS
- E. SECTIONAL SEA WALL BRACKETS
- F. ALUMINUM SUPPORT STAND PADS
- G. HOOKED SEA WALL BRACKETS
- H. GALVANIZED SUPPORT STAND PADS

- I. ROUND RUBBER PIPE CAPS
- J. POST RATCHET
- K. BUMPER SCREWS
- L. 1-1/4" TO 2-1/2" SUPPORT STAND PIPES



4' TRIANGLE
SECTION

QUICK-CHANGE CROSS
BRACE

PIPE-TO-PIPE
PIPE-TO-FRAME

3-STEP DOCK STEPS

4-STEP DOCK STEPS

5-STEP DOCK STEPS



6" FOLDING
CLEAT SEAT

MUD AUGERS

2' CROSS BRACE

POLE CROSS BRACE KIT
RECOMMENDED FOR WATER
DEPTH GREATER THAN 4'

Handle Any Lake or River Condition

CEDAR

A traditional favorite. Solid, durable wood that is naturally weather resistant. Cedar boards come in 5/4" radius smooth planks.

SKIDGUARD

A waffle-weave textured panel with a heavy-duty phenolic overlay. Provides a continuous, no-gap surface that is highly resistant to peeling or chipping. Available on 2', 4' and 8' wide docks only.

QT POWDER COATED ALL-ALUMINUM

Extruded aluminum decking that offers superior strength, low weight and corrosion resistance. Incorporates sound deadening material and a baked-on beige or white finish for a durable non-skid surface.

Wood Grain (for Residential Gangway, Ultra Dock and Ultra Bench only)

Powder-coated aluminum decking with a wood appearance – without the maintenance, warping and splinters of real wood. (Darker colors are warmer to the touch in the sun than our recommended white).

THRUFLOW

Designed for easy assembly with strong, durable and lightweight construction. Maintenance-free, reinforced polypropylene finish. Allows water and debris to fall through your dock surface.

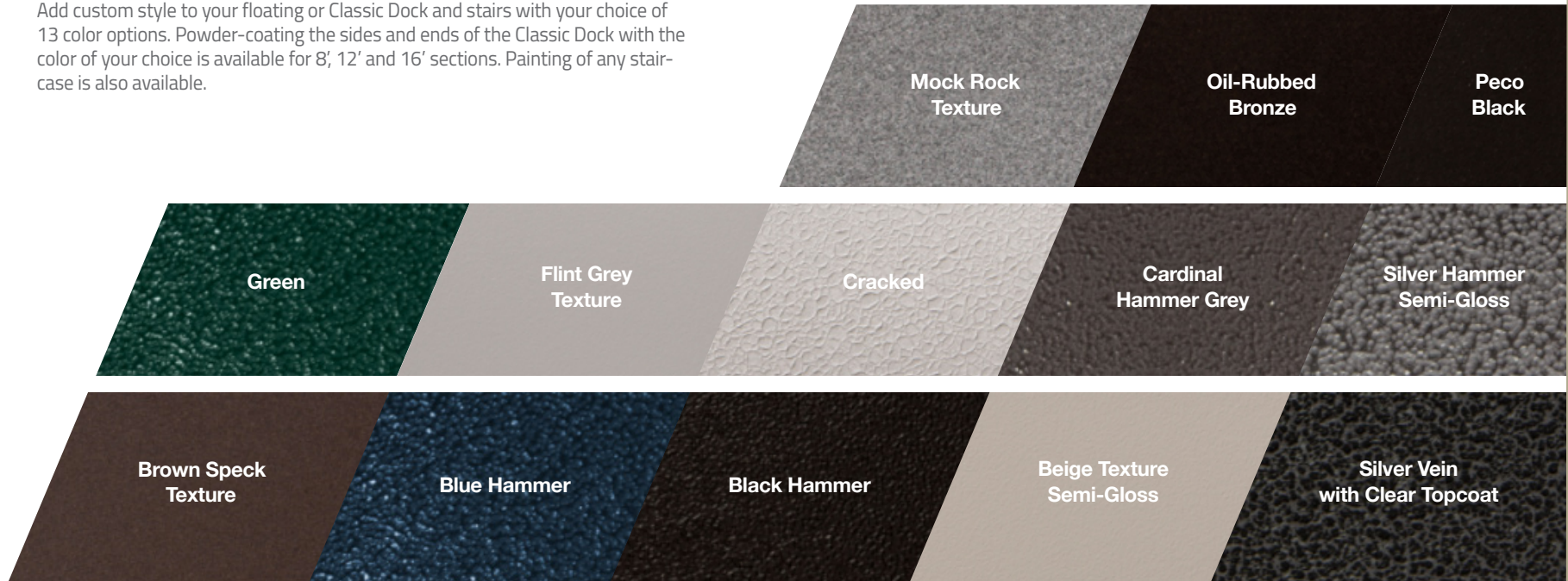
INTERLOCKING ALUMINUM DECKING SYSTEM

Well-suited for custom-made docks, dock additions, platforms and ramps. Interlocking design allows quick assembly and prevents passage of water, making it ideal for second-level decks and patios. The system has three basic parts – a starter section with mounting flange, tip-in center sections which can be added in any number to create desired width, and an end section with mounting flange. Decking can be cut to length and capped off with aluminum channel. Lightweight, high strength extruded aluminum with a baked-on, skid-resistant finish, available in white or beige.

CUSTOM COLORS FOR YOUR DOCK AND STAIRCASE

Add custom style to your floating or Classic Dock and stairs with your choice of 13 color options. Powder-coating the sides and ends of the Classic Dock with the color of your choice is available for 8', 12' and 16' sections. Painting of any staircase is also available.

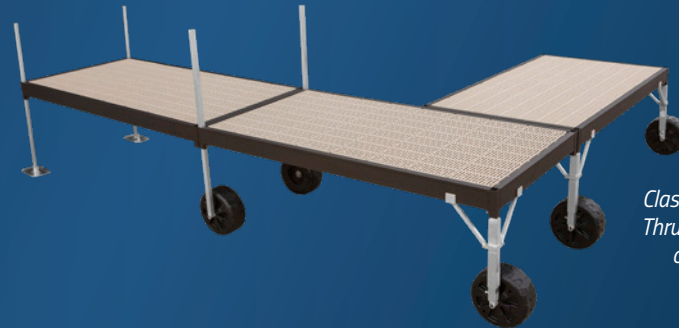
PAINT COLOR OPTIONS



Styles to Fit Any Need



Alumimum Woodgrain Decking available for Ultra Dock and bench, as well as residential gangways.



Classic Dock shown with beige Thru-Flow decking and custom oil-rubbed bronze paint.



Heavy-Duty Construction



LIFTS

HEWITT

DOCKS - LIFTS - PONTOON LEGS

Protecting Your Prized Possession

Whether it's a fishing boat, pontoon, personal watercraft or high-performance speed boat, Hewitt Manufacturing has a boat lift perfectly sized, equipped and priced for your needs. Hewitt lifts keep your watercraft convenient and ready while protecting them from the damaging effects of prolonged exposure to waves, algae and floating debris. Hewitt canopies provide additional protection, shielding your boat from rain, hail and sun.



HEWITT
DOCKS - LIFTS - PONTOON LEGS

58	Cantilever Lift	80	Roll-A-Rail™	98	Boat Port™ Floating Lift
62	Hydraulic Cantilever Lift	84	Slide-N-Go™	100	Boat Lift Boss™
64	Hi-Lift Vertical Lift	86	Extreme Wave Port™	102	Integrated Hoist
68	Personal Watercraft Lift	88	Genesis Wave Port™	103	Heavy-Duty Electric Hoist
70	Float Plane Lift	90	SLX Wave Port™	104	Lift Accessories
72	Narrow Pontoon Lift	92	Apex Wave Port™	110	Lift Specifications
74	Hydraulic Lift Series	96	Proteus Lift®	114	Canopies
78	Large Capacity Hydraulic Lift				

hewittrad.com



Quality and Durability You Can See

HEWITT
DOCKS - LIFTS - PONTOON LEGS

Hewitt Takes No Shortcuts



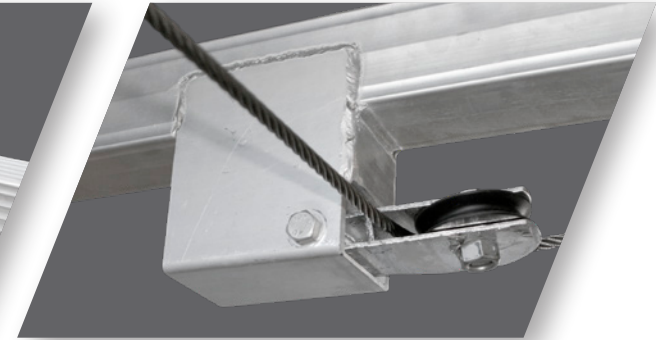
HEAVY-DUTY ALL-ALUMINUM CONSTRUCTION

Some lift makers use nothing more than a bolt for critical pivot joints, but Hewitt lifts are designed with double-reinforced pivots and made with structural aluminum tubing and welded, through-hole construction. Superior strength for superior reliability.



EXTRA REINFORCING

Poorly built lifts can sway or even break when subjected to frequent use, but Hewitt lifts are built for the real world. Crossbars are reinforced on top and bottom with extra large gussets welded to both sides for greater lateral stability and overall strength.



PULLEY BOXES

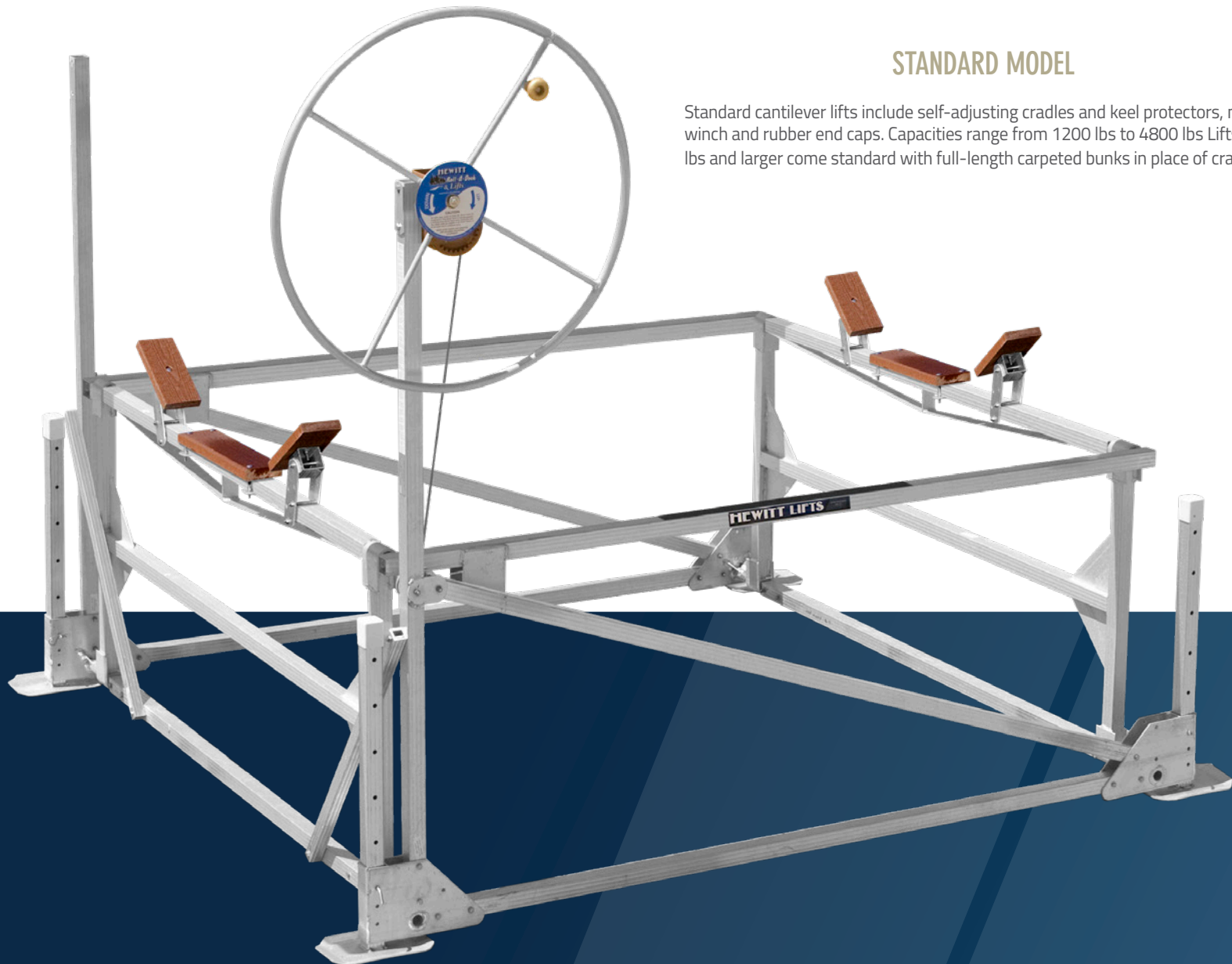
Lesser brands simply bolt pulleys to the frame, but Hewitt pulley assemblies are mounted in specially designed, reinforced plate-aluminum enclosures welded directly to the frame. Cantilever lifts also use fewer pulleys and all parts are easily accessible for reduced maintenance.

The original Hewitt cantilever lift continues to be one of our most popular models. These rugged, general purpose lifts have a natural mechanical advantage that actually makes operation easier as the boat is raised higher. Cantilever lifts also have a long history of trouble-free performance. They require fewer moving parts for superior reliability and place less stress on pulleys and cables. In the fully raised position, cables carry no weight as the load is entirely supported by the frame. Corrosion-resistant aluminum construction also assures low maintenance – no rust, no painting.

Simple, Reliable Design for Boats and Pontoons

STANDARD MODEL

Standard cantilever lifts include self-adjusting cradles and keel protectors, manual winch and rubber end caps. Capacities range from 1200 lbs to 4800 lbs. Lifts 2400 lbs and larger come standard with full-length carpeted bunks in place of cradles.





WIDE 'N' LONG MODEL

These cantilever lifts are solidly built and heavily reinforced for today's extra wide, extra long craft. Also an ideal lift for larger pontoon boats. Photo shown with standard full-length bunks.



PONTOON RACK KITS

Kits can be installed in place of the standard boat cradles. Options include wood and adjustable aluminum rack kits that lift under the pontoon's deck and serve as positioning guides.



PONTOON BEDS

Cantilever lifts can also be configured with an aluminum pontoon bed (shown above) or full-length "V" style vinyl-covered or carpeted wood beds that evenly distribute the pontoon's weight and provide full-length protection.



Airplane cantilever is shown on page 70.

Models for personal watercraft are shown on page 68.

HYDRAULIC CANTILEVER LIFT



Imagine pressing a button on a key-fob remote control as you walk to your dock and having your boat in the water and ready to go when you arrive. That's the convenience and sophistication you get with a Hewitt hydraulic cantilever lift. Based on our standard cantilever design, these lifts can rest dockside in as little as 24" of water, perfect for use with shorter docks. Available in 3900 lb and 5200 lb capacity models. Hewitt hydraulic boatlifts are the shallowest boatlift in the industry since 2001 operating with water levels only 6" deep.

The Perfect Low-Water Lift Offering Effortless Operation

FRAME COMPONENTS

The corrosion-resistant, all-aluminum frame includes two full-length adjustable bunks, keel protector and four 3' adjustable-height leveling legs with stainless steel quick-release pins. Aluminum and welds are covered by an exceptional 15-year warranty.

Four optional conversion kits available for pontoon boats.

See pages 108-123 for complete information on options, accessories and canopies.



HYDRAULIC CYLINDERS

Sealed twin hydraulic cylinders feature triple chrome-plated shafts, waterproof synthetic hose and biodegradable hydraulic fluid. The cylinders are mounted on double-reinforced uprights and pivot on large torsion pins (not bolts). In the lift's up position, the cylinders are raised completely out of the water.



HYDRAULIC PUMP CHEST & REMOTE CONTROL

Hydraulic systems are available for use with 220V AC or 12V and 24V DC power supplies. The average run time to lift a boat 38-1/2" is 63 seconds. Comes standard with two key-fob remote controls and a locking, water-resistant chest. The chest can neatly house the battery (not included) for a DC system. Options include a solar cell battery charger and space-saving pump chest stand.



EXTERNAL FILTER

Particle contamination of hydraulic oil reduces the service life of hydraulic components. This external filter is key to keeping your hydraulic oil clean and pump running smoothly without having to remove the reservoir to access the in-tank filter found on all competitor pumps.



Rock-Solid Construction

HEWITT
DOCKS - LIFTS - PONTOON LEGS

Straight Up, Straight Down – A Lift for Deep or Changing Water Levels

The Hewitt Hi-Lift is an economical, direct vertical rise lift ideally suited for deeper water applications or sites where water levels may fluctuate. These lifts are based on simple, proven technology but are distinguished by Hewitt's rock-solid construction and unique frame design, incorporating side bars that provide easier boat access and greater stability than typical "V"-style designs. While the competition's adjustable side bars limit maximum lift height, Hewitt's twelve different Hi-Lift models provide lifting capacities ranging from 1100 lbs to 10,000 lbs.



WINCHES

The Model HL1100 and HL1600 are equipped with Dutton Lainson winches, with respective 4:1 and 6:1 gear ratios. Models HL2600 to HL5600 are equipped with Hewitt high-efficiency winches, with 15:1 and 20:1 ratios. All manual winches include a 40" aluminum winch wheel with spinner knob. Larger models from the HL6600 to HL8000 come standard with a heavy-duty electric winch. An optional 25:1 manual winch with wheel is also available for the HL6600. See pages 104 and 105 for more winch options and information. HL10,000 comes standard with an E-drive 220V Electric motor or optional 24V motor.

BUNK SYSTEMS

For lighter craft the HL1100 and HL1600 include four non-scratch cradles and two keel protectors. Models from the HL2600 to HL6600 are equipped with full-length, carpeted bunks and two keel protectors. Carpeted aluminum V-bunks are standard on the HL8000 and HL10,000. See pages 108-123 for pontoon kits and other options.

CABLE ADJUSTMENT BOLTS

Extra long cable adjustment bolts enable easy optimization of cable tension.



TOP VIEW WITH BOLT STOP

3"x3" Tube with 6" Wide Flange



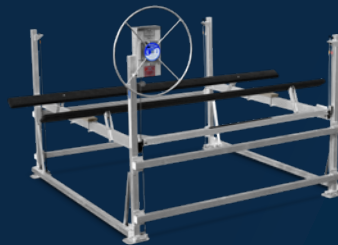
OPTIONAL ADJUSTABLE SCREW LEG

Hi-lifter adjustable screw legs mount on the corner of the lift and operate with a simple cordless drill. 15.5" of total adjustment, features built-in brake. Fits Hi-Lifts 2600 lbs to 6600 lbs.



HL1600

Standard winch, adjustable cradles and keel protectors.



HL3800

Standard full-length bunks and Hewitt high-efficiency winch.

HEWITT
DOCKS - LIFTS - PONTOON LEGS

1100-1600 SERIES CABLES

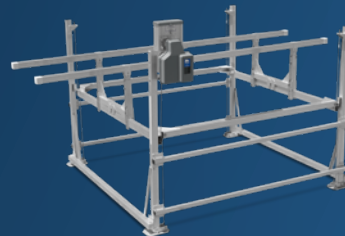
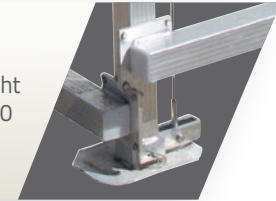
Design and construction details emphasize durability and trouble-free operation. The corrosion-resistant components include a structural aluminum frame, pre-strung, stainless steel cables and full-width acetal Delrin plastic pulleys with hardened, cast bronze bushings. End-mounted pulleys mean there are no exposed cables midway to interfere with access.



2600-10,000
SERIES CABLES

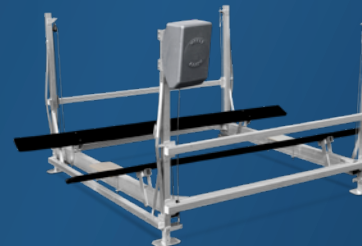
LEVELING LEGS

Four leveling legs with stainless steel quick-release pins allow easy height adjustment. 30" legs are standard on 1100 lb to 6600 lb lifts; 48" on 8000 lb to 10,000 lb lifts. Longer legs are also available.



HL3800

Shown with optional adjustable pontoon rack kit and Lift Boss motor drive.



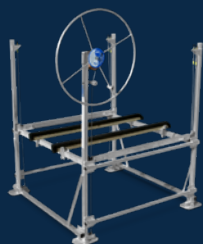
HL6600

Standard full-length bunks and heavy-duty electric winch.



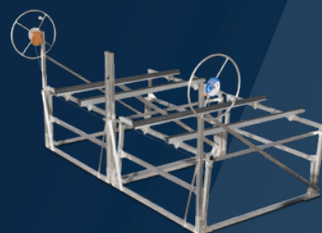
HL8000/10,000

Standard carpeted aluminum V-bunks and heavy-duty electric winch.



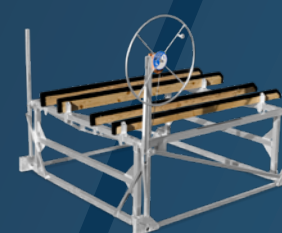
SINGLE 1100 HI-LIFT

Includes winch with 40" wheel and spinner knob, four 30" leveling legs and end caps.



DOUBLE WINCH 2300 CANTILEVER

Includes two independent winches with 40" wheels, two pair of aluminum/rubber bunks, spinner knobs, and four 18" leveling legs and end caps.

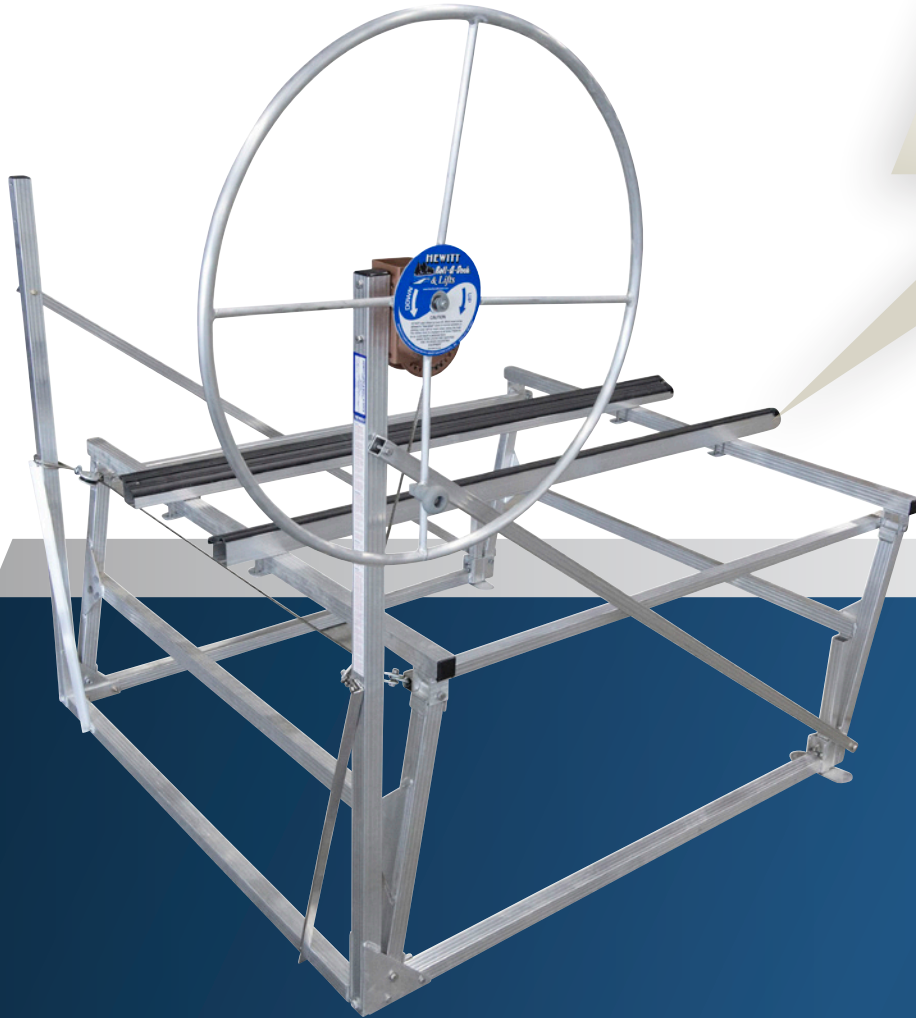


DOUBLE 1200, 1500, 1800 CANTILEVER

Includes winch with 40" wheel and spinner knob, and two different sets of bunks – one 2" x 6" and one 2" x 8", which allows one PWC to float free while the other is still supported.

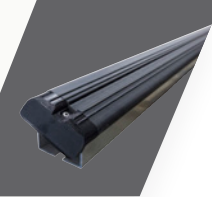
Make It Easy on Yourself

Dragging your personal watercraft or small boat across a rocky shore can ruin your hull – and your back. Raise and lower your light craft without strain or damage with Hewitt's PWC lifts. Made as a single or a double, capacities range from 1150 lbs to 1800 lbs, and all models offer the benefits of all-aluminum construction – lightweight, high strength and rust-free corrosion resistance. Standard features include horizontal crossbar reinforcement, self-braking winches with enclosed gears, durable acetal Delrin pulleys with stainless steel cable and adjustable bunks.



PWC BUNK OPTIONS

Full-length rubber bunks or pressure-treated wood bunks covered with marine carpeting.



OPTIONAL CANOPIES

Protect your prized possession from the elements.



SINGLE 1150 CANTILEVER

Includes winch with 40" wheel and spinner knob, two 18" leveling legs and end caps. Shown with optional Aluminum Bunks.

See pages 110-125 for accessories, canopy options and lift dimensions.



HEWITT
DOCKS - LIFTS - PONTOON LEGS

Sky's the Limit

Hewitt's expertise in building lift systems for all types of watercraft includes stock and fully customized solutions for float planes. Cantilever and hydraulic lifts, along with the Roll-A-Rail system can be configured to meet almost any need. Float Plane Lifts are available in sizes up to 170" wide x 240" long with weight capacities up to 24,100 lbs.

Numerous accessories, guide options and remote controls facilitate easy alignment, docking and operation. A well-designed system can reduce flight preparation time, aid maintenance and inspection, and protect your plane from the damaging forces of wind and waves.



CANTILEVER

A cantilever lift provides a strong, reliable foundation for an economical float plane lift. The model shown above is equipped with 2" x 6" Trex bunks, guide tubes and a 20:1 Hewitt high-efficiency manual winch with hand wheel (powered winches with remote control optional). Hydraulic cantilever lifts are also available.



HYDRAULIC

Hydraulic lifts offer the speed and convenience of a fully powered system with wireless remote control. 220V AC and battery operated DC models available. 12V and 24V DC systems can be configured with a solar panel charging option for use in remote locations. Photo above shows carpeted wood bunks for full-length support and a locking chest that houses the hydraulic pump and controls.



ROLL-A-RAIL

Our Roll-A-Rail system, featuring an electric drive system with remote control operation, is a safe and reliable way to bring your plane completely on shore for maintenance and/or storage. Trolleys and guide systems can be custom-built specifically for your plane.



The Best Way to Lift a Pontoon

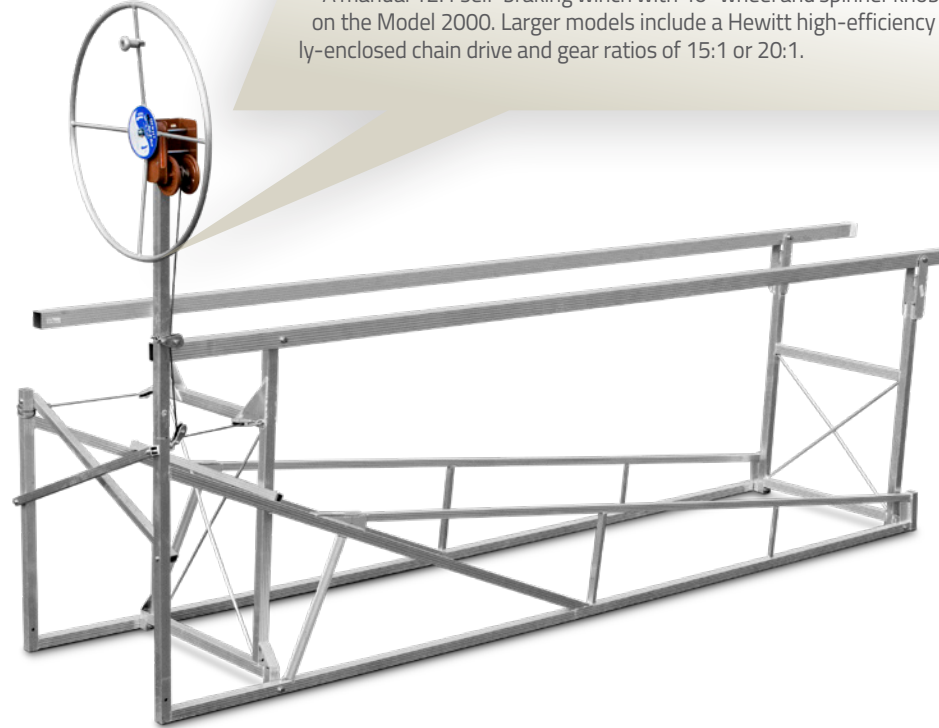
Hewitt's narrow pontoon lifts easily raise and lower even the longest pontoon boats. Full-length beams are positioned between the pontoons, not beneath them, which evenly distributes weight to the boat's deck and eliminates any risk of damage to the pontoons. Available in three standard sizes – 2000 lb with 20' length, 2400 lb with 24' length and 3000 lb with 28' length. Built to the same high standards of durability that are a trademark of all Hewitt lifts.

CONSTRUCTION

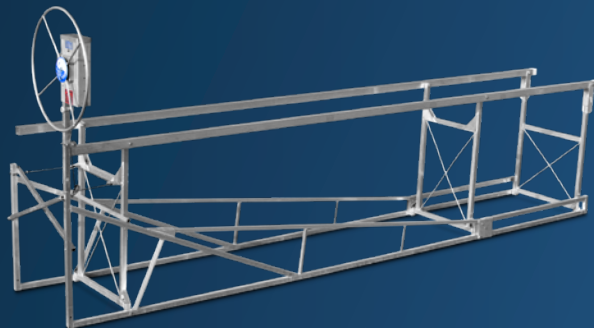
All-aluminum frames for corrosion resistance and low maintenance. Lifting mechanism features acetal Delrin plastic pulleys and stainless steel cable. When fully raised, pulleys and cable are completely free of the water and the weight of the boat is carried entirely on the frame, not on the cables, eliminating unnecessary stress and further extending cable life.

WINCHES

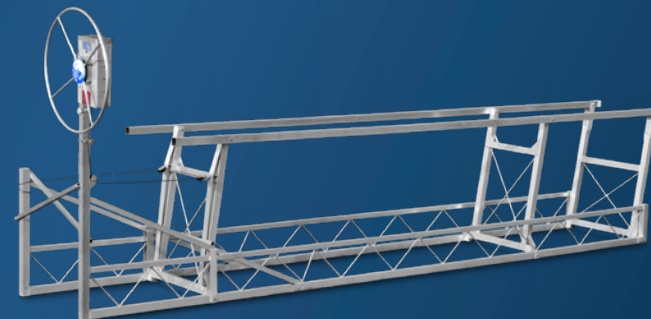
A manual 12:1 self-braking winch with 40" wheel and spinner knob comes standard on the Model 2000. Larger models include a Hewitt high-efficiency winch with fully-enclosed chain drive and gear ratios of 15:1 or 20:1.



2000 NARROW PONTOON



2400 NARROW PONTOON



3000 NARROW PONTOON

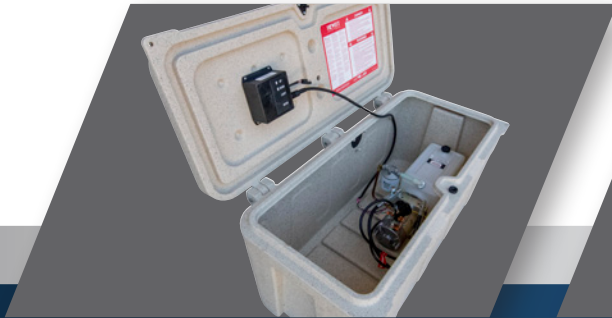


Superior Performance and Durability Are in the Details

The Ultimate for Speed, Convenience and Lifting Capacity

Hewitt hydraulic lifts offer the push-button convenience and remote control operation of our standard cantilever hydraulic models, plus faster cycle times and higher capacities, which range from 4400 lbs to a massive 24,100 lbs. All lifts have corrosion-resistant, all-aluminum frames and include a locking, water-resistant chest for housing the hydraulic pump and control system. With optional bracing and leg kits, these lifts can be used in water up to 10' deep. All sizes are available in 220V AC and 12V or 24V DC battery powered models.

A wide range of optional equipment is also available, including solar cell battery chargers, lighting kits, pump box stand, canopies and more. Lift heights for all models is 77-1/2" with the exception of Models 4400 and 6100 which are available in 54" and 76" lift heights. Hewitt hydraulic lifts are engineered to raise their maximum rated loads through the full arc of travel without hesitation. Hydraulics are optimized to provide the fastest operating speed in the industry without increasing pressure and over-stressing the pump.



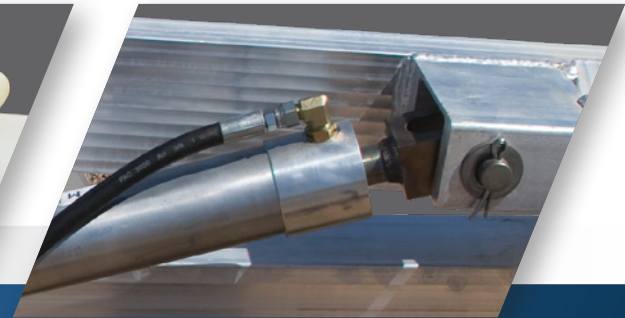
HYDRAULIC PUMP, CONTROL SYSTEM AND CHEST

All models include a locking, water-resistant chest that houses the hydraulic pump and control system. For DC models, the chest also provides storage space for batteries. Lifts can either be operated with the push-button controls within the chest or with the convenient key fob remote controls. The hydraulic system uses biodegradable hydraulic fluid that will not harm lakes or rivers. The fluid's anti-freezing properties also simplify winter storage. A translucent fluid reservoir makes it easy to check fluid level at a glance.



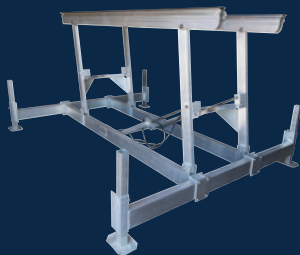
EXTERNAL FILTER

Filter is standard on 4,400 to 8,100 pumps. Particle contamination of hydraulic oil reduces the service life of hydraulic components. This external filter is key to keeping your hydraulic oil clean and pump running smoothly without having to remove the reservoir to access the in-tank filter found on all competitor pumps.



MARINE QUALITY HYDRAULIC CYLINDERS

Aluminum cylinders with solid stainless steel shafts are standard on 4400, 6100, 8100, 18,100 and 24,100 lb lifts. Commercial grade steel cylinders with triple-chrome shafts are standard on 10,100 and 12,100 lb lifts. All cylinders have long-lasting seals with scrapers designed for underwater use and hoses with water-resistant covering. Pinned end caps allow access to the cylinders if repairs are ever required, a cost advantage over welded cylinders.



STANDARD LIFTS

4400 lb and 6100 lb
(Two hydraulic cylinders)



MID-RANGE LIFTS

8100 and 10,100 lb Lifts
(Four hydraulic cylinders)

HEWITT

DOCKS - LIFTS - PONTON LEGS



REINFORCED TILTING BUNKS

Full-length rubber bunks on reinforced 3" aluminum channel are standard on 4400 - 10,100 lb models.



ALUMINUM/RUBBER BUNKS

Aluminum bunks with full-length rubber are standard on 12,100 and 24,100 lb models.

WELDED PLATES

Cantilever frame features heavy-duty materials and construction. Lift arms are reinforced with extra large plates to prevent swaying.

HEAVY-DUTY PIVOTS WITH PIN LOCK

Extruded pivot points incorporate 1" stainless steel pivot pins with notched heads to prevent pin rotation and premature wear.



PWC LIFT

Standard bunks are not designed for boats with double "V"-drives. See dealer for special bunk option.



HYDRAULIC LIFT WITH PONTOON BED

Designed to carry twin or triple tube pontoon boats on vinyl-covered or carpeted wood bunks. The bed evenly distributes weight and provides full-length support.



PONTOON HYDRAULIC LIFT

Pontoon boats can also be carried on their frames. Lift arms are spaced to fit between the tubes. The optional pump box stand can be added to any model to save dock space.



PWC HYDRAULIC LIFT

4400 lb model with push-button control, perpendicular bunks and an optional walkway is the ultimate twin watercraft lift. Quad models also available.

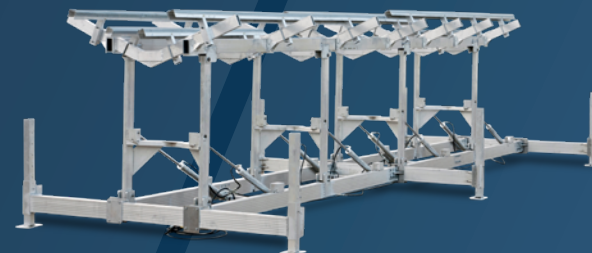
LARGE CAPACITY HYDRAULIC LIFT



12,100 LB HYDRAULIC LIFT
(4 cylinders)



18,100 LB HYDRAULIC LIFT
(6 cylinders)



24,100 LB HYDRAULIC LIFT
(8 cylinders)

Heavyweight Class Takes Watercraft to a Whole New Level

The Hewitt 12,100 lb, 18,100 lb and 24,100 lb models are a special class of hydraulic lifts. Designed to provide superior stability for large craft while retaining the speed and convenient operation of our smaller lifts, these models add a larger capacity hydraulic pump, heavier gauge aluminum and extra bracing. Describing them as heavy-duty is an understatement. All main frame members are 3-3/4" x 7-1/2" structural aluminum tubing with a .345" wall thickness. Tubing for the lift arm uprights is a full 3/8" thick. Models are equipped with four 3-1/2" sq. x 48" long leveling legs and fully adjustable aluminum/rubber bunks. Lift height is 77-1/2". With optional bracing and leg kits, these lifts can be used in water up to 10' deep.

Don't be misled by manufacturers offering warranties longer than the number of years they've been in business. Hewitt has been designing and building lifts for over 40 years, and we do it right. Wherever you look, you'll see unsurpassed quality and durability in Hewitt Hydraulic Lifts.



18,100 LB
HYDRAULIC
LIFT WITH
EXTRA BUNKS



24V DC SYSTEM WITH 5 HP MOTOR

HYDRAULIC PUMP, CONTROLS AND LOCKING CHEST

The 12,100 to 24,100 models include a large, locking, water-resistant chest to house the high-capacity hydraulic pump used for these lifts. The chest provides ample storage for batteries in addition to the pump and control system. As with all models, the system can be operated with the push-button controls inside the chest or with the key fob wireless remote controls.

See pages 104-119 for complete information on options, accessories and canopies.



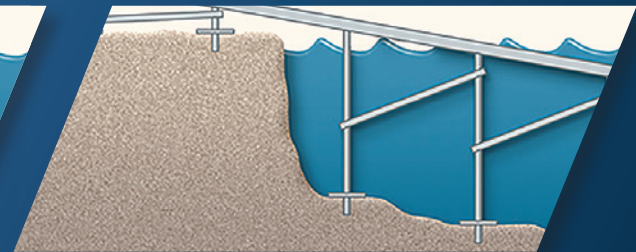
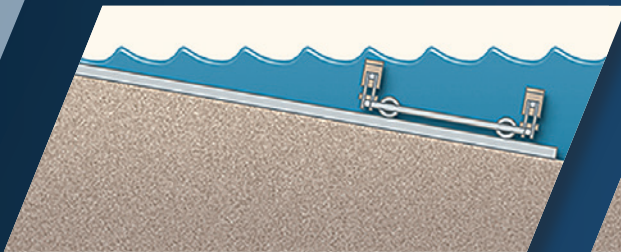
220V AC SYSTEM WITH 5 HP MOTOR



HEWITT
DOCKS - LIFTS - PONTOON LEGS

Make Your Boat Come to You

Roll-A-Rail offers a convenient way to fully protect boats, pontoons and even float planes from water and weather damage. The ease of moving your craft to and from the water aids in visual inspection and simplifies periodic maintenance or repairs. Roll-A-Rail is built to Hewitt's exacting standards and constructed from corrosion-resistant structural aluminum. Available in a 4500 lb model or a 6500 lb model that features heavier gauge stainless steel cable and an extra heavy-duty trolley. Electric motor brake for steep inclines comes standard on 6500 lb model.



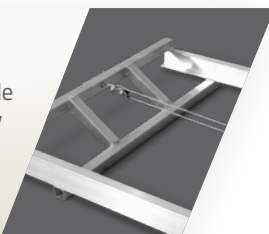
Rail system and supporting structure can accommodate widely different terrains, from gentle slopes to sharp drop-offs.

Full Protection from Water and Weather Damage

Roll-A-Rail is available with a variety of additional accessories and can be customized for the shore and water characteristics of your location. Standard 32' model can be extended to any length with 4', 8' and 16' add-on track sections.

CABLE SYSTEM

The stainless steel winch cable smoothly transports the trolley using an efficient 2-way push/pull system.

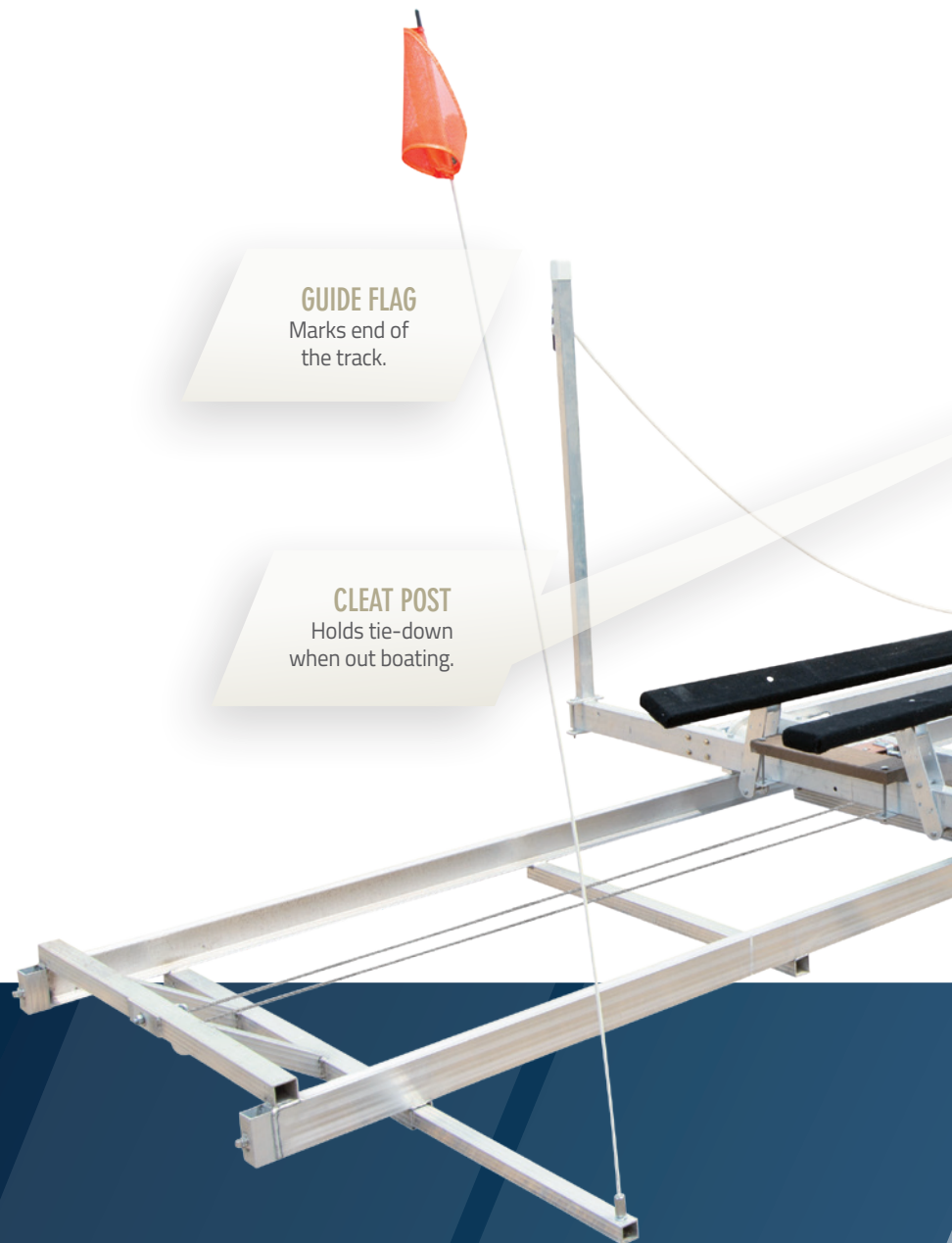


GUIDE FLAG

Marks end of the track.

CLEAT POST

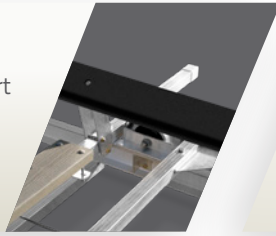
Holds tie-down when out boating.



See pages 108-123 for accessories, canopy options and lift dimensions.

CART & TRACK

Your craft travels on a heavy-duty aluminum cart and reinforced track. The trolley has full-length bunks and keel protectors, and interlocking rail guards prevent derailment.



115V AC DRIVE SYSTEM

1-HP electric motor and winch are fully enclosed in a water-resistant polyethylene chest. The enclosure also includes a lockable lid for added security.



WINCH SYSTEM

Features a push/pull drive system.



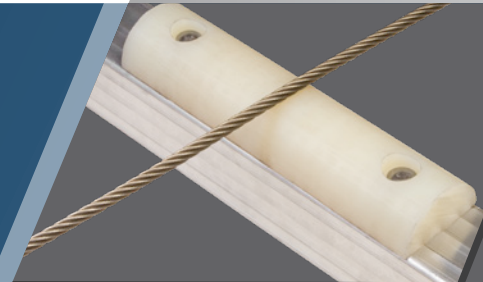
CONTROLS

The control box features simple push-button operation and an auto stop plug for connection to an optional limit switch. Two key fob remote controls with a 200' range are also included with the system.



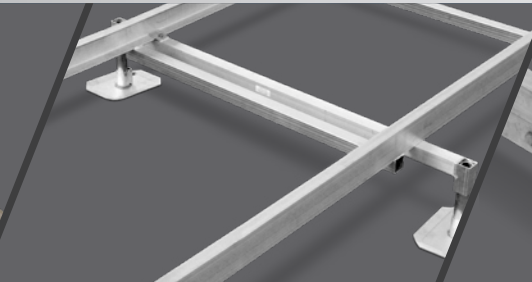
CABLE GUIDE

Optional polyethylene rail cable guides prevent wear on cross braces when the degree of slope changes.



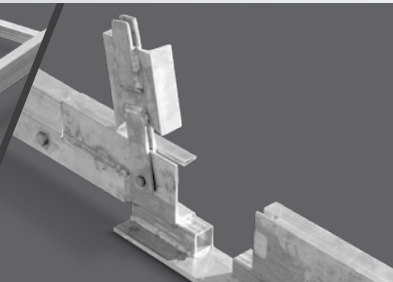
CROSSBAR WITH LEGS

Crossbars with adjustable legs can be added as needed for support on extended runs or where changes in terrain occur.



TIP-UP HINGE

Pivoting rail sections swing up to allow garage or boathouse doors to close completely. Eliminates security or environmental concerns.



MECHANICAL LIMIT SWITCH

Mechanical spring driven limit switch automatically stops the motor to prevent cart over-travel.





Slide-N-Go is a sweet solution for craft up to 1200 lbs. Made with heavy-duty 2"x5" aluminum and stainless steel hardware, it offers high strength, low weight and superior corrosion resistance. It also features UV resistant extruded plastic track glides and protective plastic end caps. The winch includes a 20' strap with hook and has a 3:7:1 ratio for easy operation and quick recovery of the craft.

HEWITT
DOCKS - LIFTS - PONTOON LEGS

Get on Track with a Portable Small Craft Lift

Free up dock space and protect the hull of your small boat or PWC with this easy-to-assemble rail lift. Slide-N-Go sets up almost anywhere in minutes and is as simple as its name. Slide your watercraft down the non-scratch plastic glides and crank it back up in seconds. If you need extra length, the basic model can be quickly expanded with an add-on track extension. Plus, a sufficient amount of cable strap is included with the winch to accommodate the use of track extensions.

SLIDE-N-GO

Weight: 116 lbs

Bed Length: 10'

Overall Length: 13.7' (including winch)

Track Width: 20" (outside measurement)



45° PLASTIC END CAPS AND TRACK GLIDES

Angled end caps protect the craft and aid mounting of the tracks in shallow water.

OPTIONAL 8' EXTENSION

8' track extension includes anchor/support brackets and adds just 52 lbs to the base unit weight.



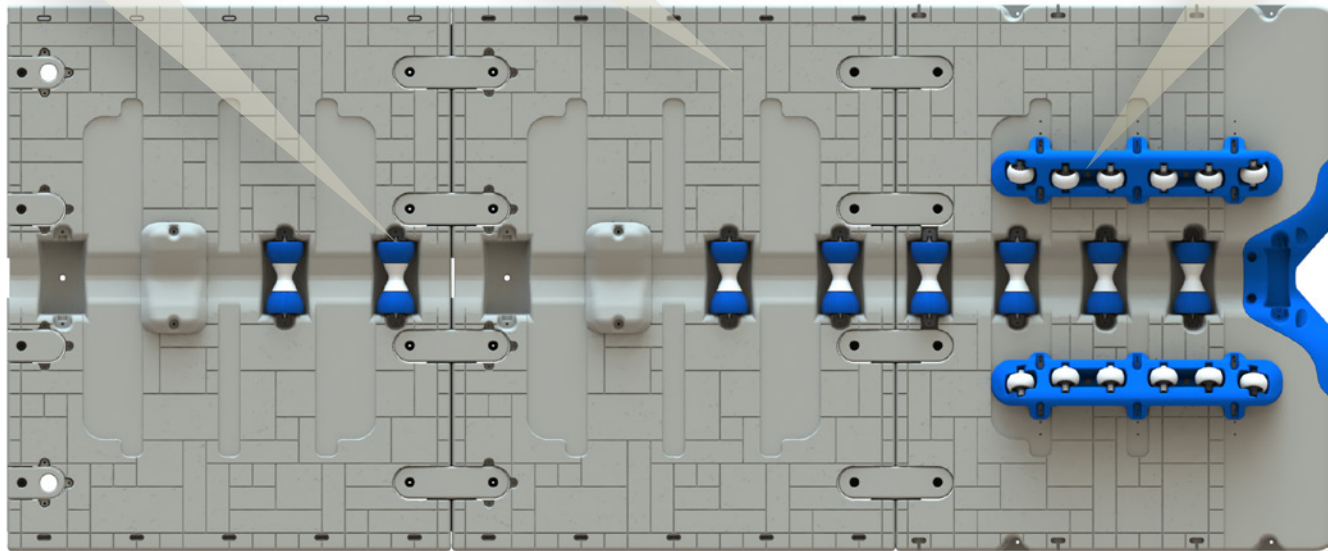
Convenience and Ease

Extreme Wave Port is a 10' wide boat port. Our modular design is recommended for boats that are 22' in length or longer. This self-leveling floating boat port fully distributes vessel weight over full span providing exceptional lift and buoyancy (up to 6,000 lbs with no air assistance). The modular design allows you to expand boat port length infinitely for longer vessels. This boat port features adjustable bunks to match any keel design (keeping the vessel square on the port) and heavy-duty keel rollers that make boarding and unboarding simple and smooth. If you're looking for a no-hassle premium floating boat port, check out the Extreme.

HEAVY-DUTY KEEL ROLLERS

MOLDED-IN TAN TEXTURED
DECK SURFACE

CENTERING ENTRANCE BUMPERS



MAIN DECK

MAIN DECK

ENTRANCE DECK

X-16 2-PIECE ASSEMBLY

Weight: 1020 lbs
Weight Cap: 4900 lbs
1 entrance deck, 1 main deck

X-24 3-PIECE ASSEMBLY

Weight: 1020 lbs
Weight Cap: 7500 lbs
1 entrance deck, 2 main decks

X-32 4-PIECE ASSEMBLY

Weight: 1552 lbs
Weight Cap: 8000 lbs
1 entrance deck, 3 main decks

Modular design allows you to expand Boat Port length infinitely.

- Thick and rugged polyethylene
- EPS foam-filled cavity
- Modular design for unlimited length
- Molded-in, tan textured deck surface
- Molded-in, patented H-beam side connection system for accessory attachment and port-to-port connection
- Heavy-duty keel rollers and centering bumpers
- Link connection system (pins)
- Perimeter attachment points
- Adjustable bunks

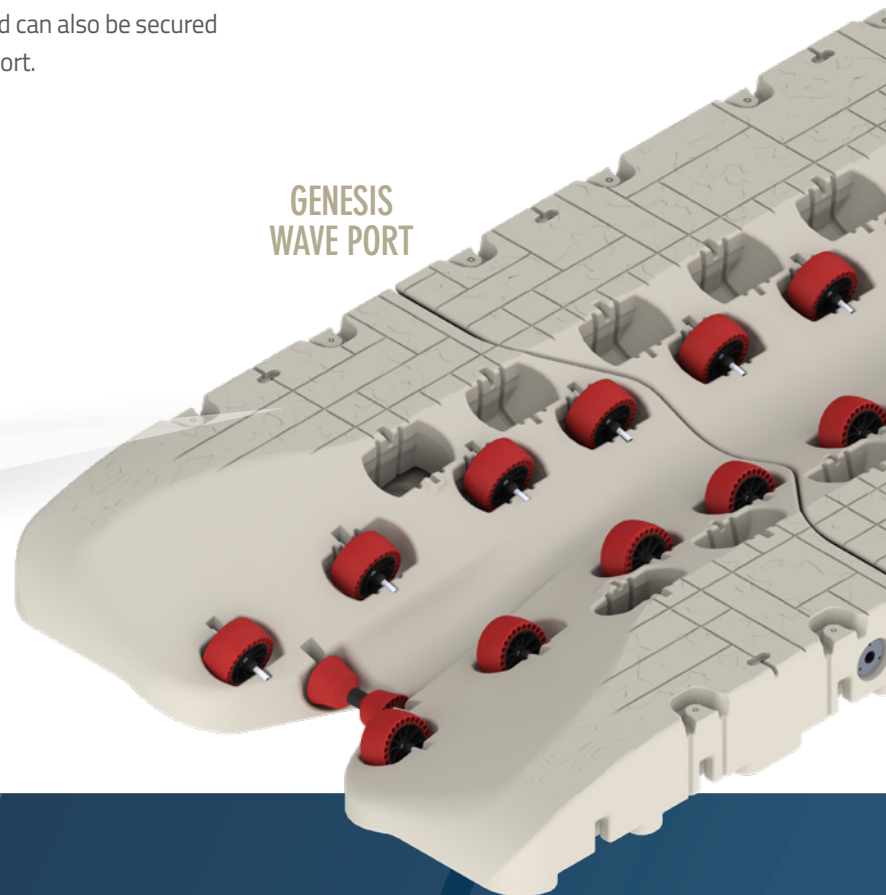
FEATURES

Rugged and Versatile

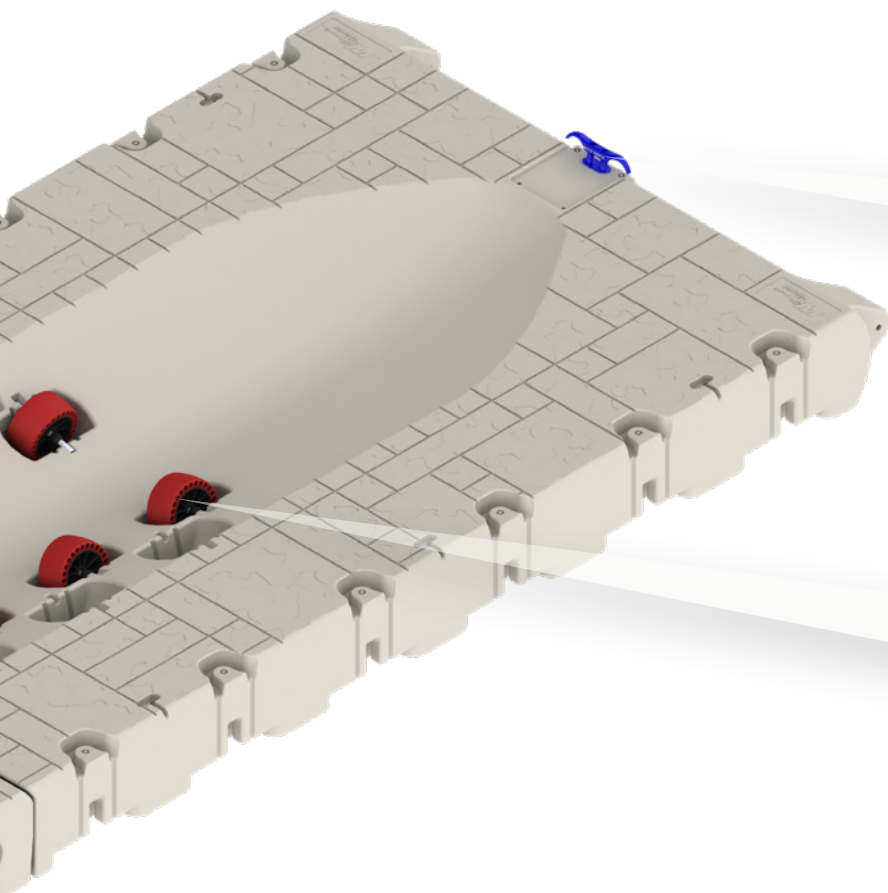
Designed with versatility in mind, these PWC ports make installations quick and effortless. With our assortment of attachment kits and accessories, Genesis Wave Port can be utilized as a stand-alone unit and can also be secured to Wave Docks and other floating dock brands, fixed docks and seawalls as well as port-to-port.

MOLDED-IN TAN TEXTURED
DECK SURFACE

GENESIS
WAVE PORT



Genesis Wave Port is designed with an extra seven inches on each side of the platform, creating standing room while mounting/dismounting your PWC. It also allows a safe walking platform to and from the port to your dock.

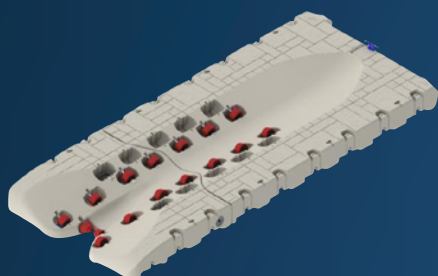


STAINLESS STEEL QUICK-CLIP
TIE-DOWN SYSTEM

SOFT URETHANE
ADJUSTABLE WHEELS

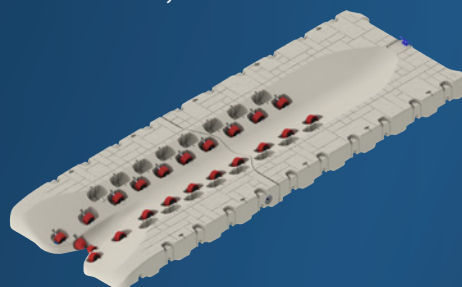
G-16

Weight: 500 lbs
Weight Cap: 2600 lbs
18 Adjustable Wheels



G-20

Weight: 575 lbs
Weight Cap: 3200 lbs
24 Adjustable Wheels



*Optional larger 3.5" x 8" wheels
available for Genesis.*

- Rotational Molded Construction
- Foam-filled Polyethylene
- Tan Textured Deck Finish
- Corrosion-Resistant Stainless Steel Wheel Axles
- Adjustable Wheels
- Self-Leveling Entrance
- Multiple Wheel Pockets for Easy Adjustment

FEATURES

Protect Your Personal Watercraft

Wave Port SLX5 (5' wide) and SLX6 (6' wide) are 12.8' in length and constructed of thick, rugged, foam-filled polyethylene. These unsinkable ports utilize a proprietary foaming process which increases buoyancy and structural integrity. Molded mounting pockets in all four corners allow for numerous anchoring possibilities.

Both ports accommodate any size personal watercraft and include a removable bow stop with tie-down ring and adjustable, polyurethane-overlaid wheels which can be strategically placed in the port bed to evenly distribute weight and aid in the loading/unloading process. Both models come in a Pebble Beach textured finish designed to match the Wave Dock system.

REMOVABLE BOW STOP WITH TIE-DOWN RING

PORT TO OTHER
FLOATING DOCK BRANDS
HINGE ATTACHMENT

SIDE EXTENSION



ADJUSTABLE POLYURETHANE-OVERLAID WHEELS



SNAP-IN CAP



POST EXTENSION ATTACHMENT



SLX5 (5' X 12'8")

Weight: 286 lbs

Weight Cap: 1500 lbs

Designed to allow two ports side-by-side fitting perfectly into a 10' slip. 8 adjustable wheels.

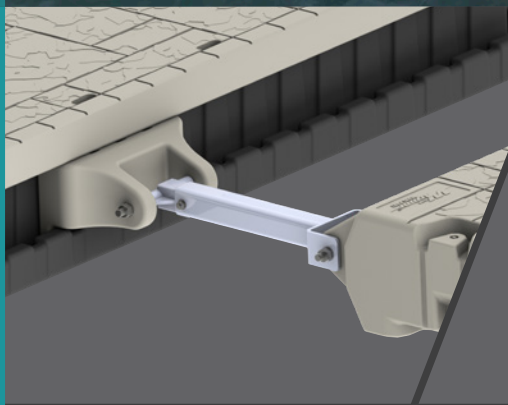
SLX6 (6' X 12'8")

Weight: 321 lbs

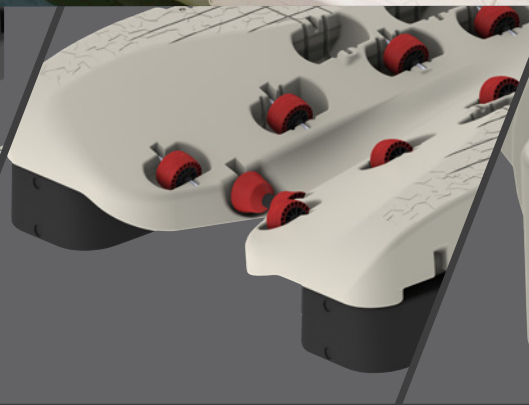
Weight Cap: 2000 lbs

Designed with an extra 6" on each side of the platform, creating a safe walking platform to and from the port and dock and allowing standing room while mounting/dismounting your PWC. 10 adjustable wheels.

- Rotational Molded Construction
- Foam-filled Polyethylene
- Integrated Side Pontoons
- Flagstone Textured Deck Finish
- Integrates with Wave Dock System



APEX TO FLOATING DOCK KIT



BUOYANCY BOOSTER



POST ATTACHMENT KIT

HEWITT
DOCKS - LIFTS - PONTOON LEGS

The Next Evolution in Jet Ski Ports

The Apex port is the easiest and largest drive on/roll off PWC port on the market. RotoMolded, foam-filled and packed with features like soft urethane, wheels that can be moved and adjusted to fit your PWC hull and a "smart stop" soft rubber bow stop to hold your PWC if your entry is too fast. The Apex port also includes a stainless steel chain and quick clip tie down system. Featuring molded-in direct connect mounts allowing our port to hinge for easier loading and unloading. This can easily connect to your existing dock or set up as a standalone port.

SOFT URETHANE
ADJUSTABLE WHEELS

MOLDED-IN TAN TEXTURED
DECK SURFACE

APEX-6 (72" X 14.4')

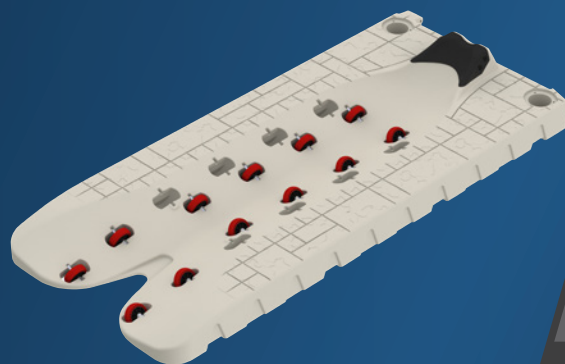
12" additional standing/walking room.
Weight: 340 lbs
Weight Cap: 2000 lbs

RUBBER BOW STOP AND
STAINLESS STEEL QUICK CLIP
TIE DOWN SYSTEM

APEX SPORT (58' X 11')

Weight: 180 lbs
Weight Cap: 700 lbs

A low-profile, floating platform designed for smaller PWCs. Features direct connect system for ease of installation. Apex Sport can quickly and easily connect to your floating or fixed dock, or set up as a standalone port.



APEX-6 TO WAVE DOCK KIT

APEX-6 TO FLOATING DOCK KIT

WAVE PORT™ ACCESSORIES & ATTACHMENT KITS



POST EXTENSION ATTACHMENT
Kits for 2" or 4" pipes.



SNAP-IN CAP
Cover unused mounting pockets.

All Wave Ports are designed to integrate with our Wave Dock System, stand alone or connect to other brands or structures utilizing our Attachment Kits.



**Z-BRACKET
ATTACHMENT KIT**
Kits for 2" or 4" pipes.



**PORT TO OTHER FLOATING DOCK
BRANDS HINGE ATTACHMENT**
Kits lock into dock C-channels.



**PORT TO PORT
ATTACHMENT**
Connect multiple ports.



BUOYANCY BOOSTER
Additional flotation for
heavier PWCs.



2" RAISED



4" FLAT

BUSHING

Raised and flat reducer bushing. Raised design increases friction on post mount applications. 2"=2 1/2" ID. 4"=4 11/16" ID.



SIDE EXTENSION
Adds 22" to one side.



**STAND ALONE PORT
TO WAVE DOCK**

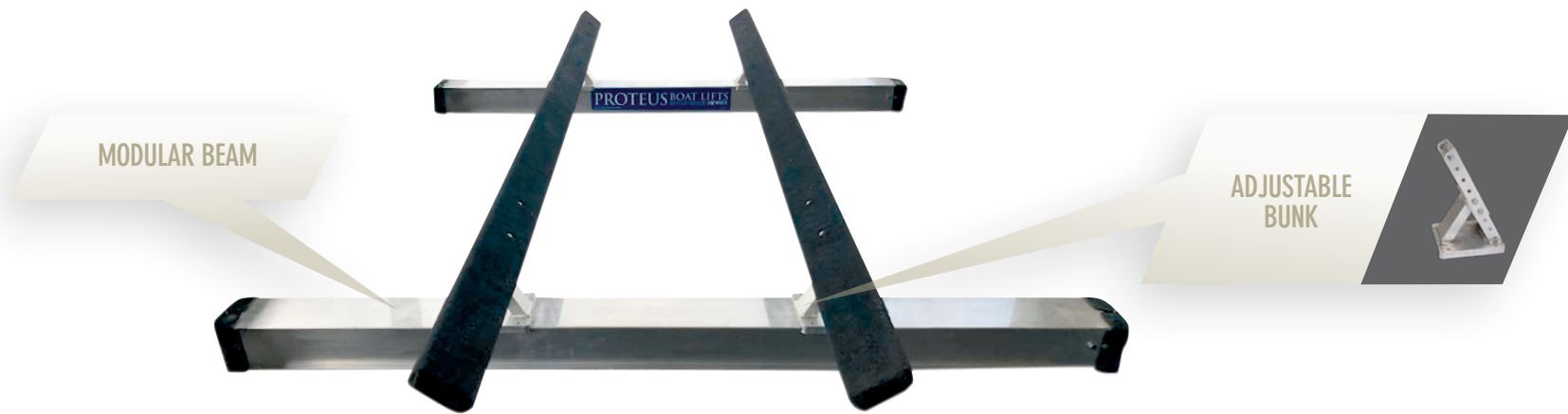
HEWITT
DOCKS - LIFTS - PONTOON LEGS



HEWITT
DOCKS - LIFTS - PONTON LEGS

Clean Design with Powerful Performance

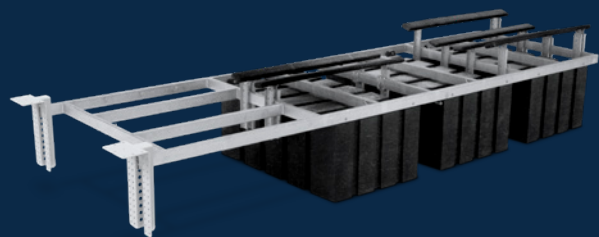
The Proteus Lift revolutionizes boat lifts for constant level lakes, addressing common issues associated with on-water boat storage. This low-profile hydraulic lift has a strong, modular design. No more bulky equipment that interferes with the overall appeal of the dock. Durable beam construction adjusts to various boat weights and eliminates water and wind movement. Adjustable mounting sockets are easily installed into wooden or metal columns at the perfect depth. The weight of your boat may vary from end to end, but the Proteus Lift ensures a level lift that is flush with your dock for easy boarding. Each modular beam solidly supports 3500 lbs and can easily be added or removed to accommodate various boats.



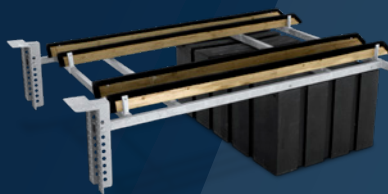
10' OR 12' WIDE LIFT

Two 8" x 7" beams solidly support 3500 lbs each.
Heavy Duty adjustable bunks for boat or pontoons.
4" Hydraulic cylinder - fast, clean, quiet and can lift 8' in 56 seconds. 12V motor with remote.

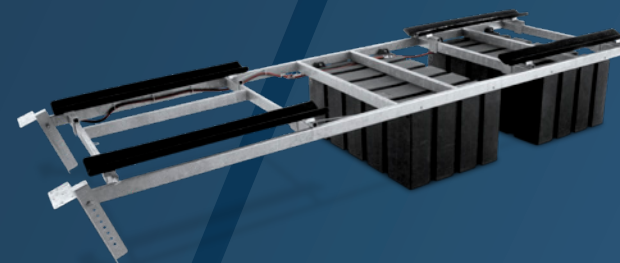
- Aluminum Bunk Upgrade
- Carpeted and Vinyl Pontoon conversions
- Wood and Aluminum Pontoon Rack Kits
- Motor Stop
- Guides
- Full Length Guides
- Canopy Light



STANDARD LARGE BOATPORT



PWC BOATPORT



PONTOON BOATPORT

See pages 104-119 for accessories, canopy options and lift dimensions.

Floating Lifts, a Deep Water Solution

The perfect companion for floating docks, floating lifts are ideal for deep water applications but can be used in as little as 4' to 8' of water (dependant on lift size). BoatPort lifts may be installed on almost any structurally sound aluminum, steel or wood floating dock that has an "L" or "U"-shaped configuration where there is at least one walkway finger or pier extending down the side of the boat. Lift operation requires access to a 115V AC receptacle. Optionally, a small portable generator or 24V battery may be used to power the pump lift. BoatPort lifts can also be installed on stationary docks provided water levels do not rise or fall more than a total of 16".

OPTIONAL
REMOTES



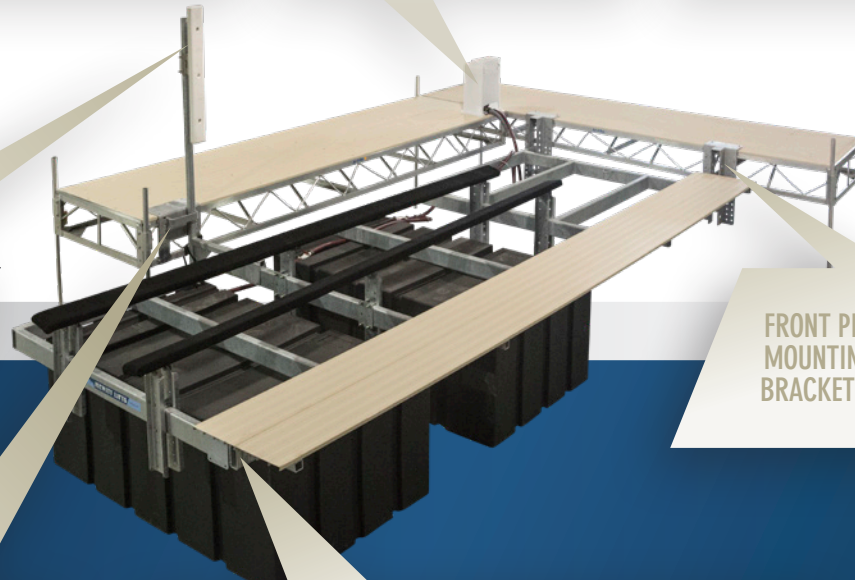
BLOWER
BOX



OPTIONAL
POST-MOUNT
PUMP MOTOR



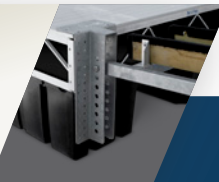
STANDARD BOATPORT



36" LOCKING
ARM BUMPER
Full-height protection.



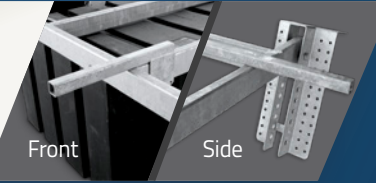
FRONT PIVOT
MOUNTING
BRACKET

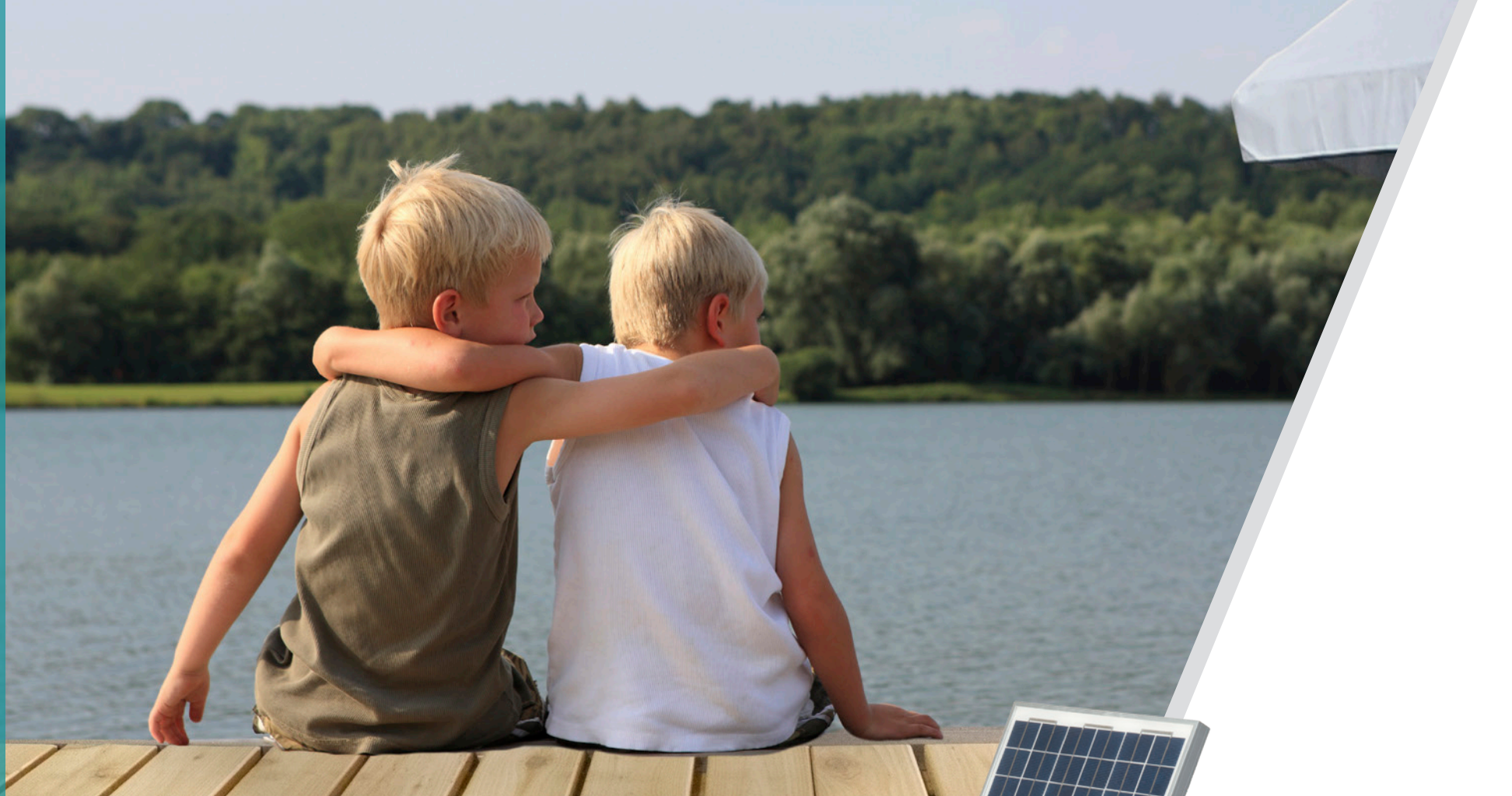


LOCKING
ARM
STABILIZER



WALKWAY BRACKETS
Provides attachment points
for a walkway along the sides
of your lift.





MECHANICAL LIMIT SWITCH

Automatically turns motor off when lift reaches the fully raised position and prevents over-lifting.



BATTERY INDICATOR

Can be used with 12V batteries. Use two units for checking the status of your 24V boat lift system, one for each battery.



SOLAR PANEL

Efficiently keep your marine battery charged without overcharging. 10, 20 and 30 watts.

Boat Lift Boss

The Boat Lift Boss direct drive system takes the place of the standard winch wheel. It features convenient remote control operation and dock lighting for added safety. The unit is quick and easy to install and is available in AC and DC versions. For use on lifts up to 6600 lb lifting capacity. Boat Lift Boss drives have a double-sealed motor shaft, sealed electrical box and O-rings around the rivets for extra protection against the elements. Drives includes a two-piece cover.

BOAT LIFT BOSS™

INTEGRATED, DIRECT DRIVE, WHEEL DRIVE

115V AC UNIT

Includes AC drive with non-remote control box and key – or – AC drive with remote control box, key and one wireless remote control key fob; motor crank for backup operation and mounting hardware.

12V OR 24V DC UNIT

Includes 12V or 24V DC drive with non-remote control box and key – or – DC drive with remote control, key and one wireless remote control key fob; motor crank for backup operation and mounting hardware.



BATTERY BOX STAND

Keep your marine batteries off your dock and out of the way. Single (12V) and double (24V) with stand.



LED LIGHT

Illuminate your Lift Boss for easy use day and night.



BUCK BOOSTER

Used when electrical wiring is inadequate. AC Models ONLY!

Integrated Hoist

Heavy-duty all-in-one winch and motor has two weight capacities, choose from either 4500 lbs or 7500 lbs. Available in AC with remote or DC with remote, and engineered to survive and surpass the stress and torque experienced with the weight of today's lifts. Weather-resistant ABS housing provides superior protection for the electronic components, plus stainless steel hardware found throughout the unit will never rust.



BOAT LIFT BOSS™

INTEGRATED, DIRECT DRIVE, WHEEL DRIVE

Anodized Aluminum Housing

- The clear anodized finish provides a great look while protecting it from corrosion.

Heavy-Duty Worm Drive Gear Head

- The Heavy-Duty Worm Drive Gear has been painstakingly engineered through years of development to survive and surpass the stress and torque experienced with the weight of today's lifts. The trauma force that lifts face cause many of the competitors' off-the-shelf parts to fail, but Boat Lift Boss Worm Drive Gear Head has the strength and holding power to not simply outlast, but to thrive in these extreme conditions.

Heavy-Duty Chain and Sprockets

- Heavy-duty hardened steel sprockets add life to the unit, while the heavy-duty chain is spun on a true roller bearing instead of a bronze bushing.

HDPE Cable Keeper

- When there is no load on the winch, cables have the potential to loosen and slip outside of the spool, which the consumer would not recognize until too late. Cables becoming caught in the chains and sprockets can cause expensive damages to the lift and leave it unusable. The HDPE Cable Keeper eliminates this possibility by keeping the cable fully contained in the spool where it belongs.

Stainless Steel Hardware

- All the hardware found throughout the unit, inside and out, is constructed of high-grade stainless steel and will never rust.

High-Power 120V or 12/24V Motor

- Available in both AC and DC models, designed and perfected for the marine environment. AC models are designed for lifts with access to GFI-protected shore power, while DC models run either on 12V or 24V battery power. Powering DC models with 24V will nearly double the lift speed. Additional battery, solar power and wiring are required.

Weather-Resistant ABS Housing

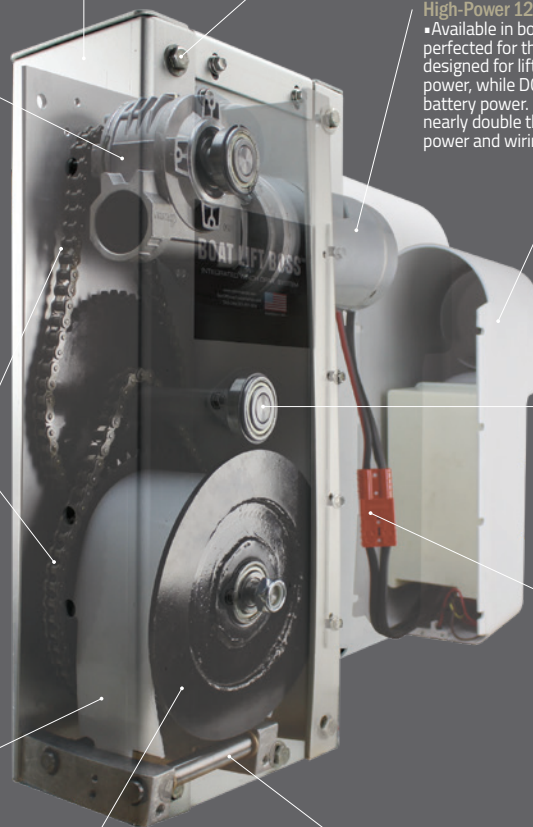
- The fully-sealed injection-molded electronics housing offers the best protection for the electrical components while providing a clean factory-designed look, not just the bolted-on afterthought look other brands feature.

Heavy-Duty Roller Bearings

- All major load-bearing points utilize oversized bearings and are protected with a plastic cover and weatherproof O-ring. Competitors use bronze bushings that can fail rapidly and crush under a load.

Field Upgradeable Quick-Detach Electronics

- The quick-detach electronic connectors allow a quick and easy electronics swap without ever needing to remove the entire unit from the lift. Eight simple screws and one quick-connect plug are all that fasten the electronics to the rest of the Boat Lift Boss, making it all possible to change the entire electrical system in less than two minutes. This feature is especially helpful when a customer wishes to add a wireless remote control to their existing Boat Lift Boss.



High-Sided Winch Drum

- High sides on the winch drum work in conjunction with the Cable Keeper so no cable can escape through the top while also allowing plenty of space for extra cable should it be needed.

Roller Fairlead

- The Roller Fairlead guides the cable properly into the drum and is recessed close to the spool, preventing the cable from ever jumping outside of the drum.

Heavy-Duty Electric Hoist

Hewitt Heavy-Duty Electric Hoists are an alternative to manual winches, offering fast, dependable, hands-free operation of your lift. These high-performance hoists feature precision machined gears powered by a 115V AC motor or optional 24V system. Motors, wiring and pulleys are specifically sized for the rated capacity of each model. Hoists include weatherproof wiring, baked-on powder coat finish and protective cover.

HEAVY-DUTY

Flat-plate gear design

2000 lb Model
4000 lb Model
6500 lb Model
8500 lb Model

E-DRIVE

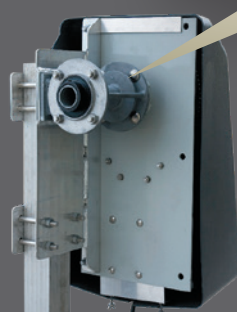
Enclosed gear system

5000 lb Model
10,000 lb Model



HEAVY-DUTY
CABLE DRUM

HEAVY-DUTY
SWITCH



HOIST ENCLOSURE, FRONT AND BACK VIEW.

Streamlined appearance plus added safety and protection.

OPTIONAL REMOTE

Remote system has a 200' range and includes two key fobs. Built with a manual up and down push button. Auto stop plug for optional limit switch.



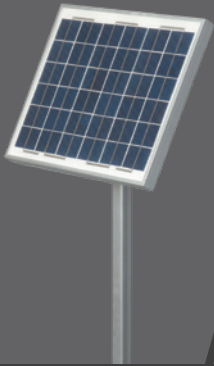


CATWALK BRACKETS

LIFT JACK

MECHANICAL
LIMIT SWITCH

Accessories



SOLAR PANEL



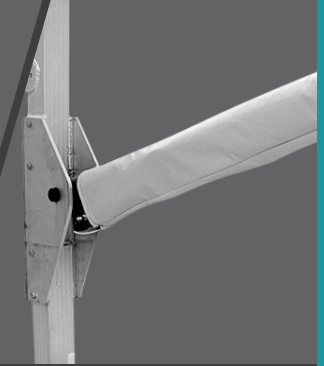
BATTERY INDICATOR



BATTERY TRAY



PUMP BOX STAND



CYLINDER SLEEVE



Standard Kit fits
3900-8100lb lifts.
Large Kit fits
10100-24100lb lifts.

11' OR 19' HYDRAULIC
HOSE EXTENSION



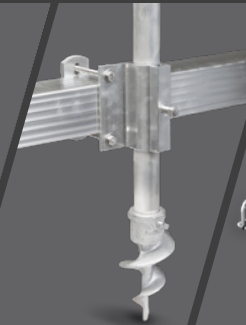
DOCK 3-STEP



DOCK 4-STEP



DOCK 5-STEP

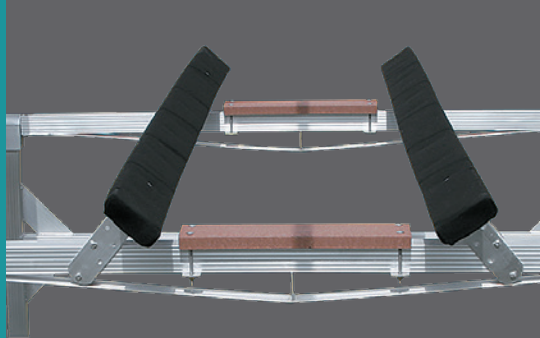


HIGH WIND
TIE-DOWN

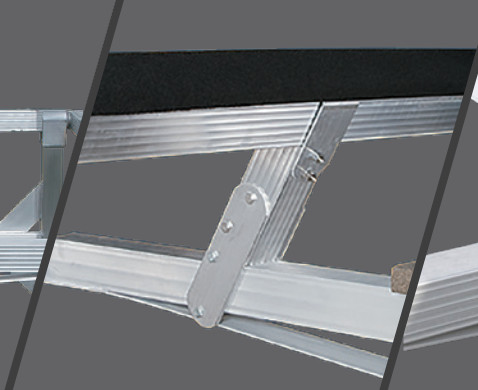


CANOPY STORAGE NET

Hewitt offers an extensive line of lift accessories designed to aid installation, simplify use and provide additional protection for your watercraft. Accessories are also available to satisfy the specific needs of certain types of craft and varying lake or river conditions. Please ask your dealer for our Parts & Accessories brochure for more information.



CARPETED FULL-LENGTH BUNKS



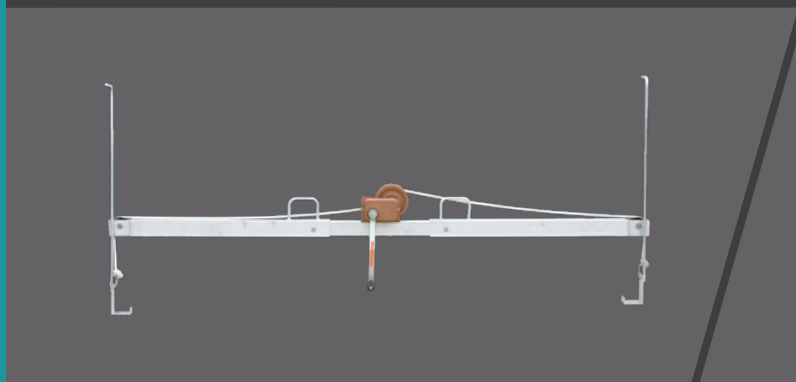
ALUMINUM V-BUNK
FOR INBOARD



ALUMINUM RUBBER BUNKS



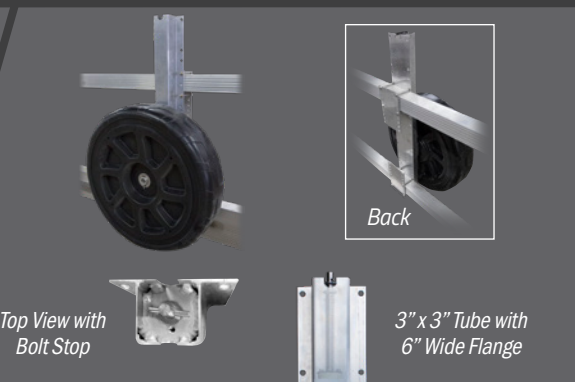
DELUXE BUNKS



TRANSPORTATION BAR

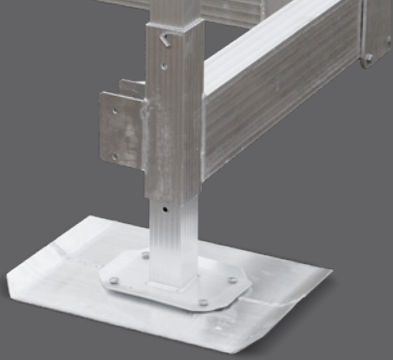


CORNER ASSIST WHEEL



LIFT EASE
ADJUSTABLE BOATLIFT WHEEL KIT

HEWITT
DOCKS - LIFTS - PONTOON LEGS



LARGE LIFT PAD



LEVELING LEG
EXTENSION



DEEP-WATER LEVELING LEGS
WITH BRACING



Top View
with
Bolt Stop

3" x 3" Tube
with 6" Wide
Flange

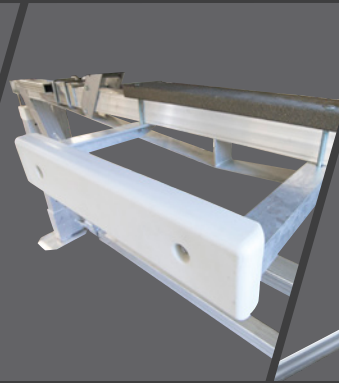
ADJUSTABLE SCREW
LEVELING LEGS



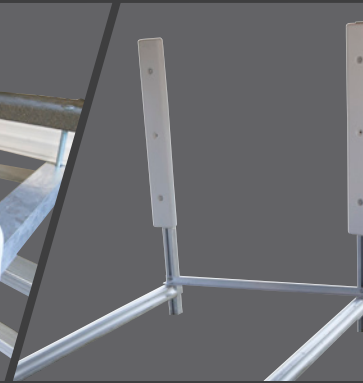
LIFT WHEEL KIT



HYDRAULIC LIFT
MOTOR STOP

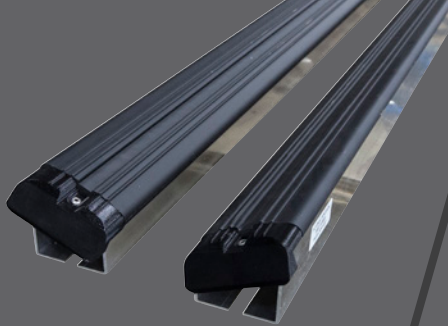


MOTOR STOP



BOW STOP

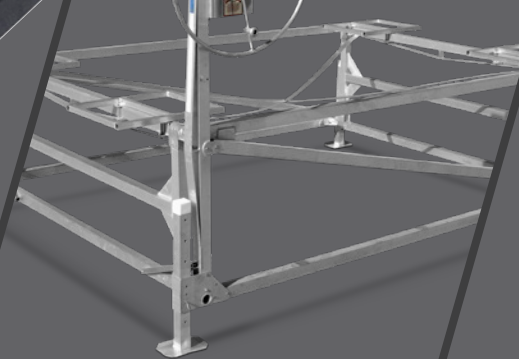
Handle Any Water Condition



VINYL PONTOON BED



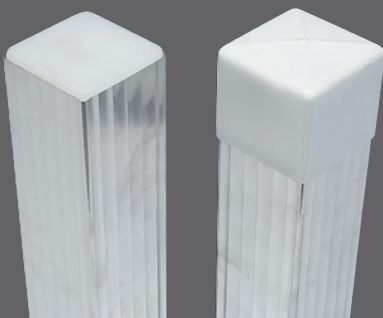
CARPETED PONTOON
WOOD BED



ALUMINUM PONTOON BED



PONTOON RACK KIT



PLASTIC PLUGS &
RUBBER CAPS



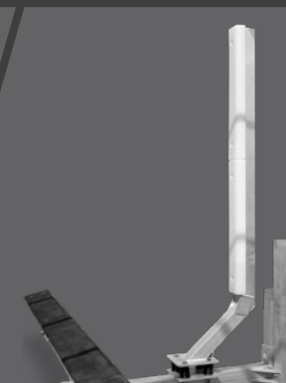
30" PLASTIC
PONTOON GUIDES



36" PLASTIC
BUMPER



RUBBER MOUNTED
CENTERING GUIDES



HEAVY-DUTY
CENTERING GUIDE

HEWITT
DOCKS - LIFTS - PONTOON LEGS



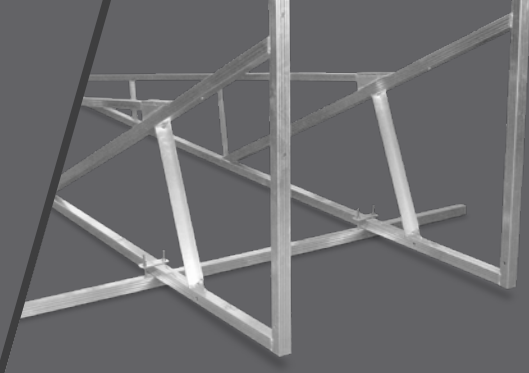
ADJUSTABLE PONTOON
RACK KIT



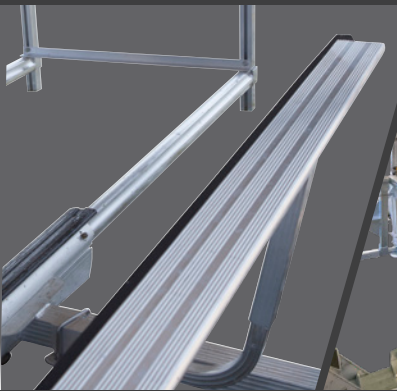
GUIDE ROLLER



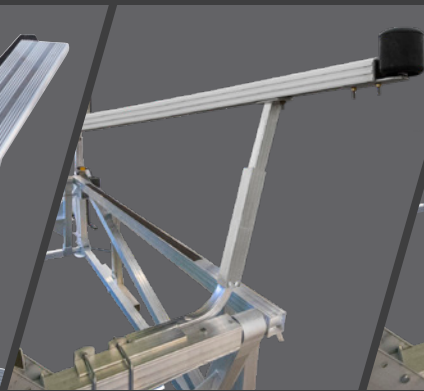
NP—
FRONT STOP



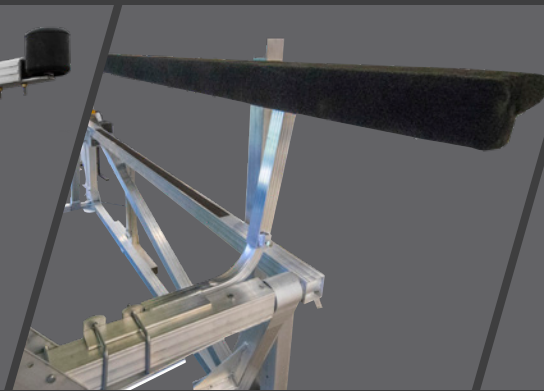
NP—STABILIZER BAR



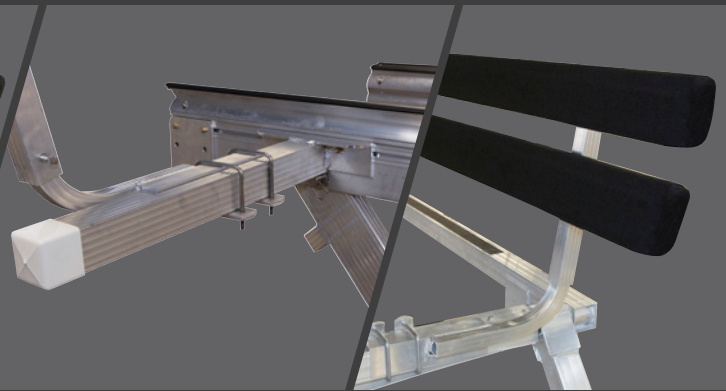
ALUMINUM FULL-LENGTH
CENTERING GUIDE STEP



DELUXE FULL-LENGTH
CENTERING GUIDE STEP



CARPETED FULL-LENGTH
GUIDE STEPS



HYDRAULIC LIFT
OUTRIGGER

CARPETED
PONTOON GUIDES

Aid Installation, Simplify Use
and Provide Additional Protection

Models and Capacities to Fit All Sizes

	MODEL	CAPACITY	INSIDE WIDTH	OUTSIDE WIDTH	LENGTH
CANTILEVER	Cantilever Standard Lift PWC LOA11-PW	1150 lbs*	67"	74"	72"
	Cantilever Standard Lift PWC LOA11A-PW-ALUMINUM BUNKS	1150 lbs*	67"	74"	72"
	Cantilever Standard Lift -Regular LOA12-096	1200 lbs*	96"	100"	102"
	Cantilever Standard Lift -PWC LOA12-PW	1200 lbs*	96"	100"	102"
	Cantilever Standard Lift -PWC Double Winch LOA23A-DW-ALUM.BUNKS	2300 lbs	67" (x2)	147"	72"
	Cantilever Standard Lift -PWC LOA15-PW	1500 lbs*	106"	110"	102"
	Cantilever Standard Lift -PWC LOA18-PW	1800 lbs*	106"	110"	102"
	Cantilever Standard Lift -Regular LOA118-96	1800 lbs	96"	100"	102"
	Cantilever Standard Lift -Wide LOA18-106	1800 lbs	106"	110"	102"
	Cantilever Standard Lift -Regular LOA24-106-FULLBUNKS	2400 lbs	106"	110"	102"
	Cantilever Standard Lift -Wide LOA24-115x102-FULLBUNKS	2400 lbs	115"	120"	102"
	Cantilever Wide 'n' Long Body Lift LOA24-115x151-FULLBUNKS	2400 lbs	115"	120"	151"
	Cantilever Standard Lift -Regular LOA30-104-FULLBUNKS	3000 lbs	104"	110"	109"
	Cantilever Standard Lift -Wide LOA30-113x109-FULLBUNKS	3000 lbs	113"	120"	109"
	Cantilever Wide 'n' Long Body Lift LOA30-113x151-FULLBUNKS	3000 lbs	113"	120"	151"
	Cantilever Standard Lift -Regular LOA36-104-FULLBUNKS	3600 lbs	104"	110"	109"
	Cantilever Standard Lift -Wide LOA36-113x109-FULLBUNKS	3600 lbs	113"	120"	109"
	Cantilever Standard Lift -Extra Wide LOA36-120x109-FULLBUNKS	3600 lbs	120"	126"	109"
	Cantilever Wide 'n' Long Body Lift LOA36-113x151-FULLBUNKS	3600 lbs	113"	120"	151"
	Cantilever Standard Lift LOA42-114-FULLBUNKS	4200 lbs	114"	120"	127"
	Cantilever Long Lift LOA42-114-FULLBUNKS	4800 lbs	114"	120"	151"
	Cantilever Standard Lift LOA48-114-FULLBUNKS	4800 lbs	114"	120"	127"
	*Leveling legs optional				
HYDRAULIC CANTILEVER	Hydraulic Cantilever Lift w/ Full Bunks LOHC39	3900 lbs	113"	120"	109"
	Hydraulic Cantilever Lift w/ Full Bunks LOHC52	5200 lbs	114"	120"	127"
	Hydraulic Cantilever Lift w/ Pontoon Rack LOHCP39	3900 lbs	113"	120"	109"
	Hydraulic Cantilever Lift w/ Pontoon Rack LOHCP52	5200 lbs	114"	120"	127"
WAVEPORT	5' Apex-5 Port	900 lbs	—	60"	132"
	5' SLX Stand Alone	1750 lbs	—	60"	152"
	6' SLX Stand Alone	2500 lbs	—	72"	152"
	6' Apex-6	2000 lbs	—	72"	172"
	16' Genesis-16	2600 lbs	—	84"	192"
	20' Genesis-20	3200 lbs	—	84"	240"
	32' Extreme - 4 piece	8000 lbs	—	120"	384"
	24' Extreme - 3 piece	7500 lbs	—	120"	288"
	16' Extreme - 2 piece	4900 lbs	—	120"	192"
	MODEL	RETRACTED	CAPACITY	BOAT LENGTHS	WEIGHT
PONTON LEGS	Straight	6-1/2"	6000 lbs	19' to 28'	447 lbs
	Wide Base	6-1/2"	6000 lbs	19' to 28'	467 lbs
	IO Wide	6-1/2"	8500 lbs	19' to 34'	514 lbs
	IO Straight	6-1/2"	8500 lbs	19' to 34'	504 lbs

Heights are measured to the top cross arm, and longer legs are available.

WEIGHT	LEVELING LEGS	LIFT BED HEIGHT-UP	LIFT BED HEIGHT-DOWN	LIFT TRAVEL	CANOPY SIZE
135 lbs	2-18"	36"	12"	24"	71"
135 lbs	2-18"	36"	12"	24"	71"
173 lbs	OPT'L	41-1/2"	4"	37-1/2"	100"
294 lbs	OPT'L	41-1/2"	4"	37-1/2"	100"
270 lbs	4-18"	36"	12"	24"	138"
362 lbs	OPT'L	41-1/2"	4"	37-1/2"	110"
362 lbs	OPT'L	41-1/2"	4"	37-1/2"	110"
226 lbs	4-36"	41-1/2"	4"	37-1/2"	100"
264 lbs	4-36"	43"	6"	37"	110"
289 lbs	4-36"	43"	6"	37"	110"
293 lbs	4-36"	43"	6"	37"	120"
327 lbs	4-36"	43"	6"	37"	120"
348 lbs	4-36"	43"	6"	37"	110"
369 lbs	4-36"	43"	6"	37"	120"
386 lbs	4-36"	43"	6"	37"	120"
376 lbs	4-36"	43"	6"	37"	110"
396 lbs	4-36"	43"	6"	37"	120"
450 lbs	4-36"	43"	6"	37"	120"
414 lbs	4-36"	43"	6"	37"	120"
470 lbs	4-36"	43"	6"	37"	120"
610 lbs	4-36"	43"	6"	37"	120"
610 lbs	4-36"	43"	6"	37"	120"
480 lbs	36"	44-1/2"	6"	38-1/2"	120"
560 lbs	36"	44-1/2"	6"	38-1/2"	120"
625 lbs	36"	44-1/2"	6"	38-1/2"	120"
705 lbs	36"	44-1/2"	6"	38-1/2"	120"
180 lbs	—	—	—	—	—
286 lbs	—	—	—	—	—
321 lbs	—	—	—	—	—
340 lbs	—	—	—	—	—
500 lbs	—	—	—	—	—
575 lbs	—	—	—	—	—
1500 lbs	—	—	—	—	—
1552 lbs	—	—	—	—	—
1020 lbs	—	—	—	—	—
FOR TRIPLE TOON INSTALLATION	PONTOONS FOR TWIN TUBES	BOTTOM TO DECK TOP	CROSS MEMBER ON REAR OF BOAT		
8-1/2"	—	72"	—		
10-1/2"	—	72"	—		
6" on Rear, 10-1/2" on Front	—	72"	—		
6" on Rear, 8-1/2" on Front	—	72"	—		

	MODEL	CAPACITY	INSIDE WIDTH	OUTSIDE WIDTH	LENGTH
VERTICAL HI-LIFT	Vertical Hi-Lift LOAH-11	1100 lbs	66"	74"	68"
	Vertical Hi-Lift LOAH-16	1600 lbs	96"	103"	96"
	Vertical Hi-Lift LOAH-26-FULLBUNKS	2600 lbs	106"	114"	106"
	Vertical Hi-Lift LOAH-38-FULLBUNKS	3800 lbs	114"	126"	114"
	Vertical Hi-Lift LOAH-46-FULLBUNKS	4600 lbs	114"	126"	114"
	Vertical Hi-Lift LOAH-38W-FULLBUNKS	3800 lbs	120"	132"	114"
	Vertical Hi-Lift LOAH-46W-FULLBUNKS	4600 lbs	120"	132"	114"
	Vertical Hi-Lift LOAH-56-FULLBUNKS	5600 lbs	114"	126"	114"
	Vertical Hi-Lift LOAH-56W-FULLBUNKS	5600 lbs	120"	132"	114"
	Vertical Hi-Lift LOAH-66-FULLBUNKS	6600 lbs**	114"	126"	114"
	Vertical Hi-Lift LOAH-66W-FULLBUNKS	6600 lbs**	120"	132"	114"
	Vertical Hi-Lift LOAH-80-FULLBUNKS	8000 lbs**	131"	145"	131"
	Vertical Hi-Lift LOAH-10-FULLBUNKS	10000 lbs**	131"	145"	131"
	**Includes 115V Heavy Duty Electric Winch				
HYDRAULIC	Hydraulic Lift 2500 54" LOH445 – 2 cylinder	2500 lbs	65"	71"	96"
	Hydraulic Lift 4400 54" LOH445 – 2 cylinder	4400 lbs	114"	120"	151"
	Hydraulic Lift 4400 76" LOH447 – 2 cylinder	4400 lbs	114"	120"	151"
	Hydraulic Lift 6100 54" LOH61 – 2 cylinder	6100 lbs	114"	120"	151"
	Hydraulic Lift 6100 76" LOH61 – 2 cylinder	6100 lbs	114"	120"	151"
	Hydraulic Lift 8100 LOH81 – 4 cylinder	8100 lbs	132"	138"	206"
	Hydraulic Lift 10100 LOH101 – 4 cylinder	10100 lbs	132"	138"	206"
	Hydraulic Lift 12100 LOH121 – 4 cylinder	12100 lbs	132"	138"	206"
	Hydraulic Lift 18100 LOH181 – 6 cylinder	18100 lbs	132"	138"	240"
	Hydraulic Lift 24100 LOH241 – 8 cylinder	24100 lbs	132"	138"	396"
NARROW PONTOON	Narrow Pontoon Lift LOAP-20	2000 lbs	35"	41"	18'
	Narrow Pontoon Lift LOAP-24	2400 lbs°	35"	41"	22'
	Narrow Pontoon Lift LOAP-30	3000 lbs°	35"	42-1/4"	22'
	° Includes Hewitt High Efficiency Winch—15 to 1 or 20 to 1 gear ratio.				
	MODEL	BUNK LENGTHS	MAX LIFT CAPACITY	# OF TANKS	MAX BOAT LENGTH
BOATPORT	BoatPort LOF20-15	2-9'	2000 lbs	1	15'
	BoatPort LOF45-20	2-12'	4500 lbs	2	20'
	BoatPort LOF60-23	2-14'	6000 lbs	2	23'
	BoatPort LOF60-25	2-16'	6000 lbs	2	25'
	BoatPort LOF75-26	6-7'	7500 lbs	3	26'
	BoatPort LOF75-28	4-7' / 2-9'	7500 lbs	3	28'
	BoatPort LOF10-29	4-9' / 2-14'	10000 lbs	4	29'
	BoatPort LOF10-32	4-9' / 2-16'	10000 lbs	4	32'
	BoatPort LOF10-35	4-9' / 2-16'	10000 lbs	4	35'
	Pontoon BoatPort LOFP45-20	8-7'	4500 lbs	2	22'
	Pontoon BoatPort LOFP45-25	8-7'	4500 lbs	2	25'
	Pontoon BoatPort LOFP75-25	12-7'	7500 lbs	3	25'
	Pontoon BoatPort LOFP60-28	8-7'	6000 lbs	2	28'
	Pontoon BoatPort LOFP80-30	8-7'	8000 lbs	3	30'
	PWC BoatPort LOF12	2-9'	1200 lbs	1	12'
	PWC BoatPort LOF24-DS (Double)	4-9'	2400 lbs	1	12'
	PWC BoatPort LOF24-DF (Double Inline)	2-16'	2400 lbs	1	12'

WEIGHT	LEVELING LEGS	LIFT BED HEIGHT-UP	LIFT BED HEIGHT-DOWN	LIFT TRAVEL	CANOPY SIZE
170 lbs	4-30"	64-1/2"	8-1/2"	56"	71"
262 lbs	4-30"	64-1/2"	8-1/2"	56"	100"
333 lbs	4-30"	64-1/2"	8-1/2"	56"	110"
411 lbs	4-30"	63-1/2"	9-1/2"	54"	120"
439 lbs	4-30"	63-1/2"	9-1/2"	54"	120"
447 lbs	4-30"	63-1/2"	9-1/2"	54"	120"
475 lbs	4-30"	63-1/2"	9-1/2"	54"	120"
606 lbs	4-30"	63-1/2"	12"	51-1/2"	120"
642 lbs	4-30"	63-1/2"	12"	51-1/2"	120"
736 lbs	4-30"	63-1/2"	12"	51-1/2"	120"
771 lbs	4-30"	63-1/2"	12"	5-1/2"	120"
880 lbs	4-48"	75-1/2"	13"	62"	138"
910 lbs	4-48"	75-1/2"	13"	62"	138"
245 lbs	4-36"	65"	20-3/4"	33-1/4"	71"
522 lbs	4-36"	54"	20-3/4"	33-1/4"	120"
559 lbs	4-36"	76"	20-3/4"	55-1/4"	120"
722 lbs	4-36"	55"	23"	32"	120"
759 lbs	4-36"	77-1/2"	23"	54-1/2"	120"
999 lbs	4-36"	77-1/2"	23"	54-1/2"	138"
1100 lbs	4-36"	77-1/2"	23"	54-1/2"	138"
1300 lbs	4-48"	77-1/2"	23"	54-1/2"	138"
1600 lbs	4-48"	77-1/2"	23"	54-1/2"	138"
2540 lbs	6-48"	77-1/2"	23"	54-1/2"	138"
292 lbs	OPT'L	62"	12"	50"	120"
384 lbs	OPT'L	62"	12"	50"	120"
487 lbs	OPT'L	62"	12"	50"	120"

BED WIDTH	MIN SLIP WIDTH	MIN WATER DEPTH*
7' 0"	8' 9"	5' 0"
7' 0"	8' 9"	5' 6"
7' 0"	8' 9"	5' 6"
7' 0"	8' 9"	5' 6"
7' 0"	8' 9"	6' 0"
7' 0"	8' 9"	6' 0"
7' 0"	10' 0"	7' 0"
8' 6"	10' 0"	8' 0"
8' 6"	10' 0"	8' 0"
7' 0"	8' 9"	5' 0"
7' 0"	8' 9"	5' 0"
7' 0"	8' 9"	5' 0"
7' 0"	8' 9"	5' 0"
7' 0"	8' 9"	5' 0"
4' 6"	6' 6"	4' 0"
7' 0"	8' 9"	4' 0"
4' 6"	6' 6"	4' 0"





Cover Your Craft

HEWITT
DOCKS - LIFTS - PONTOON LEGS

Protect Your Investment From the Top Down

Constant exposure to sun, wind and driving rain can ruin your watercraft from the inside out. Cracking, fading and peeling not only takes away from the look, comfort and function of your boat, it reduces the value of your investment. Hewitt's custom-designed aluminum framed canopies are the perfect way to "top-off" the protection provided by your Hewitt Lift. Available in a variety of great colors and sizes, our nylon-reinforced vinyl canopies provide years of beautiful, maintenance-free protection and can be designed for other applications as well, including carports, boat slip covers and rail system covers. If you have a special canopy need, just give us a call.



TENSION CORDS

CANOPY BRACING

CANOPY SUPPORT STRAP

REINFORCED CORNERS



FLAT-END STANDARD CANOPY

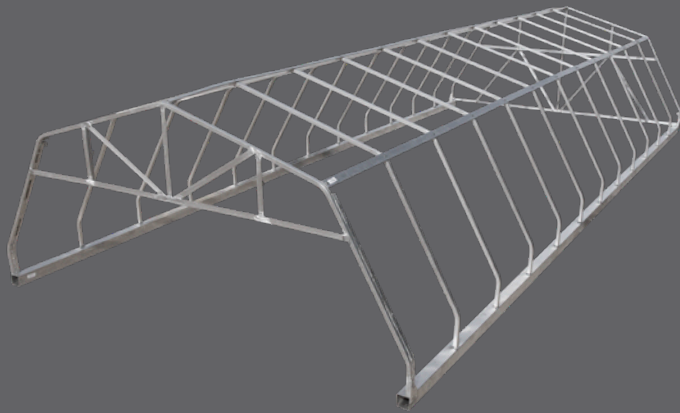
Mesh ends available in 22' and up. Canopies allow more air movement and still keep the privacy inside.



STANDARD CANOPY

Canopy frame with crossbows positioned every two feet. Canopy is solidly mounted on telescoping legs with 3" x 3" side support tubes.



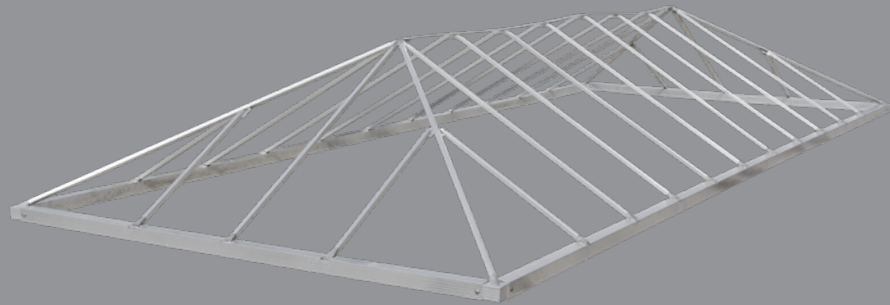


TOWER CANOPY

Arched canopy provides greater vertical clearance, allowing boat towers and pontoon Bimini tops to remain in upright position for storage.

PEAK ROOF CANOPY

Steeply pitched canopy rapidly sheds water. Higher profile and clean lines accentuate the color of your canopy.

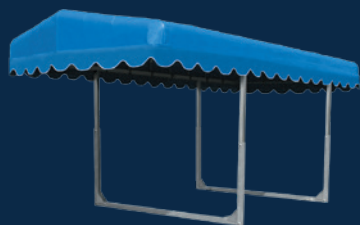


Choose the frame design, fabric and color that suits your needs and completes your waterfront. Our four frame styles – Standard, Tower, Curtain, and Peak Roof – are built with the same Hewitt strength of design you've come to know. Each features large 3" x 3" aluminum side-rails with support bows positioned every 18" to 24".

Our canopies are built for long-lasting durability, featuring multiple connection points to the frame, reinforced corner patches, center snaps and webbing straps at tie-down points which are secured by at least three layers of material and distribute pressure over a wider area than traditional grommets competitors use.



Wakeboards have mesh on top portion to allow air movement but still keep the privacy inside.



RAIL SYSTEM & NARROW PONTOON CANOPY

Simplified canopy frame designed specifically for attachment to Hewitt narrow pontoon lifts or Roll-A-Rail.



FREE-STANDING CANOPY

Canopy frames typically attach directly to a lift but can stand independently for use with pontoon boats equipped with legs. Secure anchoring is achieved with the addition of 8' posts and augers.

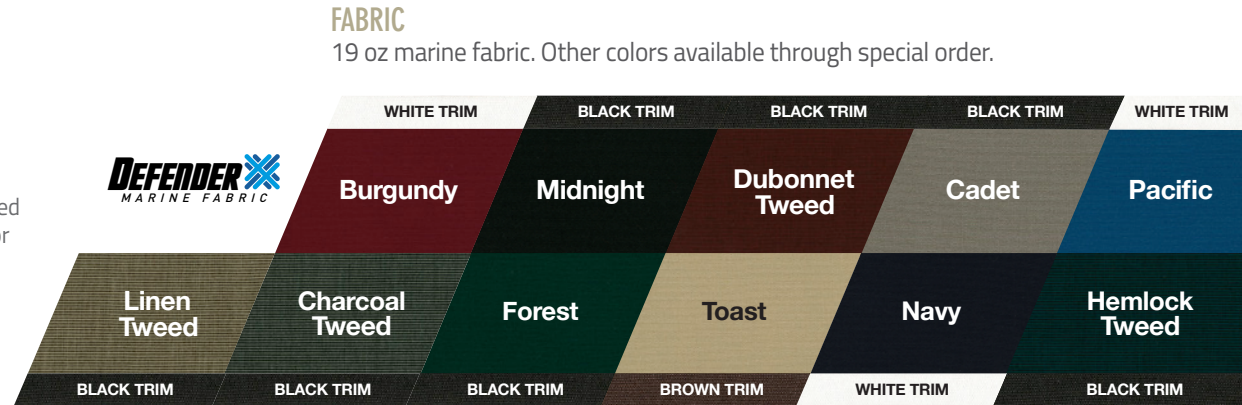


CANOPY OPTIONS

Standard trim combinations shown. Custom combinations available.

DEFENDER STANDARD COLORS

19 oz marine fabric made from combining fabric with a textured marine grade vinyl. Waterproof and has a fluorocarbon finish for UV, water, mildew and fade resistance. Choose from 11 popular colors. Other colors available through special order.



STANDARD VINYL COLORS

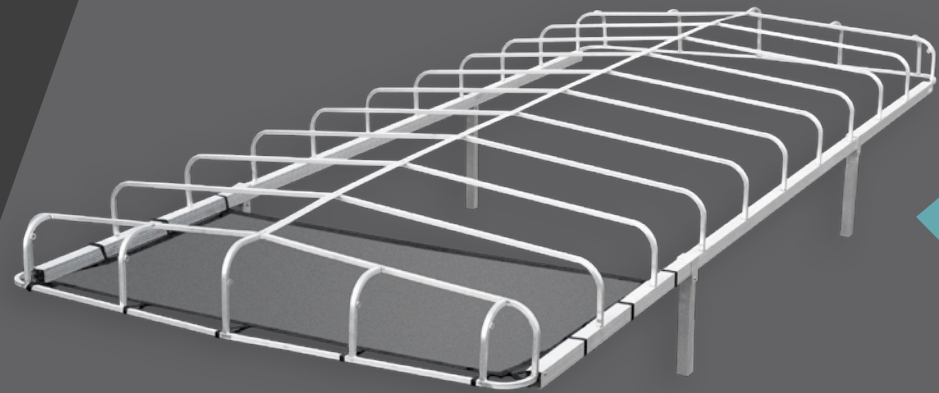
16 oz nylon with stitched 9 x 9 reinforced vinyl Waterproof and UV resistant to prevent premature fading. Randomly textured finish in 7 popular colors.



UNDER-CANOPY STORAGE NET

Make the most of available space with our convenient storage net. Easily attaches to the canopy frame, providing quick access to supplies and recreational gear. Weight capacity approximately 75 lbs.

*Bumpers, Wheel Kits and Catwalk Brackets
available on pages 104-109.*



Lifts that Travel With You

Hewitt hydraulic Pontoon Legs are available in two models to best match the size, style and operating conditions of your pontoon boat. These models help preserve the appearance and value of your pontoon, eliminate the need to tie off your boat and free up space at your dock. In addition to Hewitt's trademark heavy-duty aluminum construction, these models feature 2" diameter hydraulic cylinders which are 20% stronger than those of competitors. The hydraulic system is powered by a 12V DC pump and uses environmentally friendly, biodegradable fluid.

DESIGNED TO WORK WITH YOUR BOAT AND TRAILER

Leg assemblies are solidly bolted to the existing frame members of your pontoon boat and will not interfere with trailering or normal operation. In the retracted position, legs extend less than 6-1/2" below the deck allowing the use of scissor or bunk style trailers. The Straight Leg and Wide-Base models add approximately 425 lbs with a capacity of 6000 lbs. Each leg assembly stands on a 30"-long, pivoting foot that compensates for uneven terrain and provides excellent stability, even on soft bottoms. At maximum leg extension, the underside of the boat's deck is 72" above the bottom of the feet.



Let Your Boat Stand on Its Own Feet

HEWITT
DOCKS - LIFTS - PONTOON LEGS

PONTOON LEGS

122 Hydraulic Wide-Base Pontoon Legs®

124 Hydraulic I/O Pontoon Legs®



HYDRAULIC WIDE-BASE PONTTOON LEGS®



ONBOARD SCREEN
Adjust each leg
independently and
see location of legs.



*Single hydraulic pumps for
Straight Legs and Wide-Base Legs.*

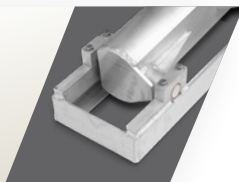


**WIRELESS
REMOTE CONTROL**

HYDRAULIC WIDE-BASE LEGS

Wide-Base and Straight Leg models are identical with one exception. Specially designed angled mounting brackets give these legs the widest base of any on-board lift available today – 72"! That's 24" wider than the nearest competition. This extra width and stability is ideal for twin or triple pontoon boat owners who live or travel in areas of strong winds and rough water.

HEAVY-DUTY PIVOT
WITH BRASS
BUSHINGS



LEG ASSEMBLY
IN RETRACTED
POSITION



HEAVY-DUTY
2" HYDRAULIC
CYLINDERS



EXTRA
REINFORCEMENT



HYDRAULIC STRAIGHT LEGS

This model can be used with either twin or triple pontoon boats and uses heavy-duty 6" diameter aluminum tubing for superior strength and greater load carrying capacity. This model features dual synchronized hydraulic pumps front and rear. Each leg is connected to its own pump, providing faster extension and retraction. Front and rear legs can be operated separately to level your boat.





Nothing Slows You Down

Specially designed for I/O pontoon boats with a performance package and/or other pontoons that prevent the use of other legs due to a lack of space between pontoons or concerns over loss of speed from rear leg drag. The I/O mounting system positions the rear legs behind the pontoons. There's nothing in the water stream to slow you down or affect performance. I/O Hydraulic legs can be installed on almost any pontoon boat and can be used in combination with two front leg options, the Hewitt hydraulic straight leg or wide base leg.

HORIZONTAL
CROSS-MEMBER
WITH TOW HOOK



SUPPORT
BRACKET



FRONT LEG
ASSEMBLY IN
RETRACTED POSITION



REAR LEG
PLACEMENT IN
RETRACTED POSITION



HEAVY-DUTY
2" HYDRAULIC
CYLINDERS



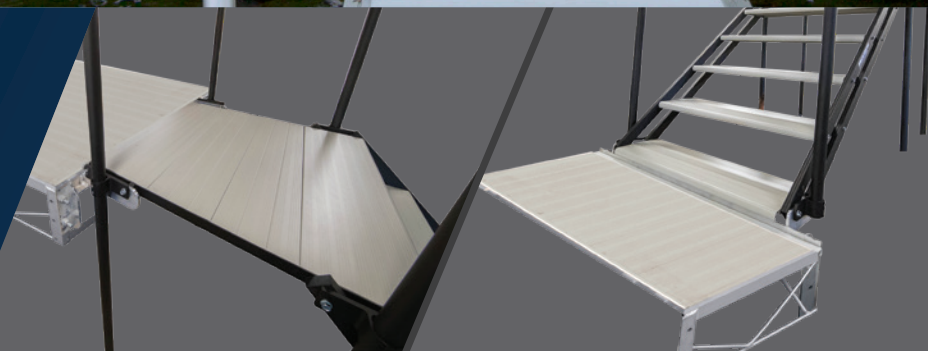
ON-BOARD PENDANT AND
WIRELESS REMOTE CONTROL





A Step Above the Rest

Stair treads and landings are made from the same high-quality decking that is available on Hewitt docks. The All-Terrain Staircase is available in two durable decking options. Corrosion-resistant QT powder coated all-aluminum decking with a baked-on finish provides sure footing even when wet. Lightweight maintenance-free reinforced polypropylene finished thruflow allows water and debris to fall through your dock surface. All components are ruggedly constructed, yet low in weight for easy handling and assembly.



ADJUSTABLE DOCK-TO-STEP BRACKET

Attach an ascending or descending staircase to a dock, deck or seawall.

Tame Your Terrain

ALL-TERRAIN STAIRCASE SYSTEM™

Hewitt All-Terrain Staircase is the perfect solution for areas where construction of a permanent staircase would be too difficult or costly. The system's unique design allows it to be adjusted to almost any terrain or slope, and we can customize steps or platforms to any specific length. Landings and railings are standard. Multiple landings can be added as needed. No permanent footings are required – simply use the optional landing pads, or pound the support poles directly into the ground. There is no faster or easier way to add the convenience and safety of a durable stairway to your property.



BEFORE

AFTER



BEFORE

AFTER



ALL-TERRAIN STAIRCASE SYSTEM™ ADJUSTABLE 5-STEP SECTION



ALUMINUM BULLNOSE STEP



STANDARD 5- OR 8-STEP SECTIONS

5-step sections adjust from 3' to 4-1/2' in height.
8-step sections adjust from 5' to 7-1/2' in height.



Aluminum

ThruFlow

**Durable, Lightweight,
and Versatile.**



ADJUSTABLE CLASSIC DOCK STEP BRACKET

Attach an ascending or descending
staircase to a Classic Dock.

Keep Your Stairs Clean and Dry with Thru-Flow Decking

Thru-Flow decking is designed for easy assembly with strong, durable and lightweight construction. Maintenance-free, reinforced polypropylene finish. Allows water and debris to fall through your staircase surface. Powder-coat the sides and ends of your staircase with the color of your choice for a custom look.



THRU-FLOW BULLNOSE STEP



THRU-FLOW



THRU-FLOW DECKING

Keep your stairs clear and safe with ThruFlow decking. ThruFlow requires no maintenance and will provide years of enjoyment.

Gray

White

Beige





Shown with beige ThruFlow
and oil-rubbed bronze painted
sides and handrailings.

HEWITT
DOCKS - LIFTS - PONTOON LEGS

Looking for Something Unique? No Problem!

Hewitt Custom Adjustable Stairs are completely custom with lots of options. Shown with beige aluminum steps and painted side and hand railings. Choose from 13 colors and either aluminum or ThruFlow decking.



CUSTOM
ADJUSTABLE
STAIRS



CUSTOM PAINT OPTION

Customize your Staircase with 13 color options, see page 53 for more details.

PAINT OPTIONS FOR SIDES/HANDRAILING & ALUMINUM STEP TREADS

Oil Rubbed
Bronze

Mock Rock Texture

Peco Black

Cardinal
Heather Grey

Blue Hammer

Silver Vein with
Clear Topcoat

Silver Hammer
Semi-Gloss

Flint Grey Texture

Green

Cracked

Brown Speck
Texture

Black Hammer

Beige Texture
Semi-Gloss

Aluminum

ThruFlow





On the Waterfront

Leisure, recreation, utility – Whatever brings you to the water's edge, you can count on Hewitt docks, lifts and Pontoon Legs for safety and durability every step of the way. Hewitt offers extensive product lines, and we're sure you'll find a model and package of accessories ideally suited for the terrain and water characteristics of your property.

HEWITT
DOCKS - LIFTS - PONTOON LEGS



You Can Count on Hewitt

LIMITED WARRANTY

During the periods stated below from the earlier of the date of purchase or the date the product was put into service, Hewitt Machine & Mfg., Inc. (hereinafter "HEWITT") shall cover the costs of parts needed to repair or replace any of the following products defective in material, workmanship or factory preparation, subject to the limitations and expectations contained herein.

1. 15 year warranty on aluminum welds; excluding floating dock.
2. 5 year warranty on the following:
 - a. BoatPort galvanized steel and welds;
 - b. Vinyl and SeaMark canvases; and
 - c. Aluminum decking.
3. 3 year warranty on BoatPort polyethylene tanks.
4. 2 year warranty on Pontoon Legs parts and components, Floating Dock frames and all other products and accessories (hereinafter the "Warranted Products").

This Limited Warranty is subject to the following limitations and exceptions:

1. This Limited Warranty covers only Warranted Products manufactured by HEWITT. Non-HEWITT manufactured products are sold "as is," without warranty of any kind by HEWITT including any express warranty and implied warranty regarding MERCHANTABILITY OR FITNESS FOR A PARTICULAR PURPOSE, AND ALL SUCH WARRANTIES ARE DISCLAIMED. The sole warranty, if any, with respect to such non-HEWITT manufactured products is given by the manufacturer or producer thereof. Based upon HEWITT's knowledge the following warranties are provided by other manufacturers: Boatlift hydraulic pumps and hoses carry a manufacturer's 2 year warranty. Hydraulic cylinders carry a manufacturer's 1 year warranty. BoatPort controller carries a manufacturer's 1 year warranty. However, HEWITT makes no representations or warranties concerning these non-HEWITT manufactured products, and the customer should inquire directly with such third party manufacturers regarding any warranties.
2. This Limited Warranty covers only Warranted Products purchased new by the original purchaser. This Limited Warranty shall not extend to anyone other than the original purchaser of the HEWITT product.
3. This Limited Warranty does not cover the labor costs to repair or replace the Warranted Products.

4. This Limited Warranty does not cover the costs to repair damage to the Warranted Products caused by corrosion, fading and minor deterioration resulting from exposure to the elements, including the sun, environmental factors or acts of God. "Environmental factors" include such things as airborne fallout, chemicals, tree sap, salt, ocean spray, water hazards. "Acts of God" include such things as fire or accident, rainstorms, hailstorms, windstorms, tornadoes, sandstorms, lightning, floods and earthquakes.
5. This Limited Warranty does not cover the costs to repair damage to the Warranted Products caused by abuse, misuse, neglect, poor/improper maintenance, tampering with parts, improper or unauthorized adjustment or alteration.
6. This Limited Warranty does not cover the costs to repair damage to the paint and/or finishes, puncture damage, dents, or scratches of the Warranted Products.
7. This Limited Warranty does not cover the costs of normal/scheduled maintenance of the Warranted Products.
8. This Limited Warranty does not cover the costs to repair damage to the Warranted Products caused by improper installation.
9. This Limited Warranty does not cover the costs to repair damage to the Warranted Products caused by the failure to comply with specifications or instructions. Specifications and instructions are subject to change without notice.
10. HEWITT reserves the right to make changes in the Warranted Products at any time without incurring any obligation under this Limited Warranty to make the same or similar modifications on Warranted Products previously manufactured and/or sold.
11. In the event of a possible warranty claim, the Warranted Product shall be returned to HEWITT. If proven to be defective upon inspection, the defective Warranted Product shall be exchanged for new or comparable rebuilt products, as determined by HEWITT, and shipped back to the original owner/purchaser. All shipping costs are the responsibility of the customer. Warranty replacement shall not extend the original warranty period of the defective Warranted Product. HEWITT must be notified in writing within one month of the expiration of the applicable period of the Limited Warranty for an item to be evaluated for warranty.
12. The customer's remedies with respect to Warranted Products shall be exclusively limited to the repair or replacement remedy as provided in this Limited Warranty and in no event shall HEWITT be liable for loss of profits, revenues, savings, inconvenience, associated costs, expense for equipment or service, use

of capital, facilities, services, storage charges, damage to property, or any other special, incidental or consequential damages caused by the use or misuse of, or inability to use, the Warranted Product, regardless of the legal theory on which the claim is based, and even if HEWITT has been advised of such damages. In no event shall recovery of any kind against HEWITT be greater in amount than the purchase price of the Warranted Product sold by HEWITT and causing the alleged damage. Without limiting the foregoing, the purchaser assumes all risk and liability for loss, damage or injury to persons, animals or property arising out of use or misuse of, or inability to use, the Warranted Product. HEWITT is not liable for third party claims. In no event shall HEWITT be liable for incidental or consequential damages to the full extent such may be disclaimed by law.

13. This Limited Warranty is the only warranty between the parties. This Limited Warranty states the limits and association of risk between two parties. The customer acknowledges and understands this Limited Warranty and agrees to be bound by the terms contained herein. No other express or implied warranties or guaranties, except as indicated in this Limited Warranty, given by any person or entity with respect to HEWITT and its products shall bind HEWITT. This Limited Warranty supersedes all other warranties expressed or implied. NO IMPLIED WARRANTIES, INCLUDING ANY IMPLIED WARRANTY OF MERCHANTABILITY OR FITNESS FOR A PARTICULAR PURPOSE APPLY TO HEWITT AND ITS PRODUCTS AND ARE HEREBY DISCLAIMED.

Specifications are subject to change without notice. Installation of Pontoon Legs may require minor modifications to your boat. Protected by one or more of the following U.S. Patents: 6,907,853; 6,983,707; 7,051,665; 7,156,030; 20,100,239,371. Other patents pending. Pontoon Legs and LiftTrack are trademarks of Hewitt Machine and Manufacturing, Inc.



PRINTED IN THE USA 0202-11

HEWITT

DOCKS - LIFTS - PONTOON LEGS
www.hewittrad.com

709 Old Hwy 14, Nicollet, MN 56074
Weekdays, 7:30 am to 4:30 pm CST
Ph: 507.225.3421 or 800.544.2067
Fax: 507.225.3053
www.hewittrad.com

